

Awake

word and music by Tommy Montgomery

Moderately ♩=96

Keyboard **B** brass/strings

pad

A **G A B**

Faster ♩=136

Intro (0:32)

Riff A

B5

Grtr. 1 (dist. w/ chorus)

G5 **D5** **A5** **E5**

Grtr. 2 (dist. w/ chorus)

T					
A	16			14	12
B	16	19	17	16	14
				11	11
				13	14 13 14
					16

Riff B

Grtr. 3 & 4 (dist.)

P.M.--+ **P.M.--+** **P.M.+** **P.M.--+** **P.M.--+** **P.M.+**

T						3			0
A	4	4	4	4	4	3	3	2	0
B	4	4	4	4	4	0	2	2	0
	2	0	0	0	2	0	0	2	2
	0	0	0	0	0	0	0	0	0
						3			0

* composite arrangement

End Riff A

B5 G5 D5 A5

TAB: (14) 12 16 16-14 13 14 14 13 14 16 14 12 14/12

End Riff B

TAB: 4 4 4 4 4 4 4 4 4 4 4 4 3 3 2 2 2 2 2 3 5
 2 0 0 0 2 0 0 0 2 0 0 2 0 0 0 0 0 0 0 0 0 0 0 0

Riff C
Bsus4

Gtrs. 1 & 2

TAB: 16 18 16 14 16 18 16 14 16 18 16 14 16 14 16 16 16 16 16 16

Riff D

Gtrs. 3 & 4

TAB: 2 2 4 2 2 4 2 4 2 2 4 2 0 2 4 0 2 4 0 2

Bsus4

TAB: (16) 18 16 14 16 16 18 16 14 16 18 16 14 16

TAB: 4 0 2 4 0 2 4 (4) 2 2 4 2 2 4 2 2

Gr. 4 tacet

4

Em

D/F#

B

Gr. 2

(8)

17 17 15 19 19 17 15 17 15 19

T
A
B

Gr. 1

8va

19 19 17 20 20 19 17 19 17 20

T
A
B

Gr. 3

2 2 0 5 2 4 4 2

Am/C

N.C.

Cmaj7

(8)

15 17 15 17 19 17 16 17 16 17 16 17 16 17 20

16 17 16 19 11 9 8 10 9 10 9 12 11 12 9 10 9 10 8 9 12

2 2 3 5 3 3

Riff E

Badd11

Badd11/A

Gtrs. 5 (clean w/ chorus) & 6 (acous.)

Musical notation for Riff E, measures 1-4. The top staff shows the melody for guitar 5. The middle two staves show the guitar 6 part with tablature. The bottom staff shows guitar 3 with chord diagrams for Badd11 and Badd11/A.

Gtr. 3 tacet

End Riff E

Badd11

D⁶/₉

Gsus2

Asus4

Musical notation for Riff E continuation, measures 5-8. The top staff shows the melody for guitar 5. The middle two staves show the guitar 6 part with tablature. The bottom staff shows guitar 3 with chord diagrams for Badd11, D⁶/₉, Gsus2, and Asus4.

Verse 1 (1:41)

Bsus4

A⁶/₉

A- wake, _____

a- rise, _____

Riff F

End Riff F

Musical notation for Verse 1, measures 1-4. The top staff shows the melody for guitar 5. The middle two staves show the guitar 6 part with tablature. The bottom staff shows guitar 3 with chord diagrams for Bsus4 and A⁶/₉.

Gtrs. 5 & 6: w/ Riff F (3 times)

Bsus4

A⁶/₉

Bsus4

and let the sun _____ o - pen your eyes. _____

A- lign _____

Musical notation for Verse 1 continuation, measures 5-8. The top staff shows the melody for guitar 5. The middle two staves show the guitar 6 part with tablature. The bottom staff shows guitar 3 with chord diagrams for Bsus4 and A⁶/₉.

A⁶/₉ Bsus4

your mind. You were ne -

A⁶/₉

- ver that blind.

Gtrs. 5 & 6: w/ Riff E
Gtr. 1 Badd11 Badd11/A

T
A
B

7 6 7 7 9 7 6 7 5

Badd11 D⁶/₉ Gsus2 Asus4

T
A
B

9 8 9 9 11 11 12/14 14 1/2 14 12 10 12

Verse 2 (2:25)

Gtr. 1 tacet
Gtrs 5 & 6: w/ Riff F (4 times)

Bsus4 A⁶/₉

To live, to die.

Gtrs. 3 & 4 P.M.+

T
A
B

2 4 4 2 2 4 4 2 0 2 0 0 2 2 2 2

Bsus4 A6%

Just clip your wings _____ and you'll fly. _____

P.M.-| P.M.-| P.M.-| P.M.-|

T
A
B

2 4 4 2 2 2 2 4 4 2 2 2 4 2 2 0 0 0 0 4 2 2 2 2 2

Bsus4 A6%

w/ Riff D (Gtrs. 3 & 4)

Give up, _____ give in. _____

T
A
B

Bsus4 A6%

Don't let the mad - ness be- gin. _____

T
A
B

Gtr. 4 tacet

Esus2 Gsus2 Asus2 Esus2 Gsus2 Asus2 Bsus2

Gtr. 3

P.M.-| P.M.-| P.M.-| P.M.-| P.M.-| P.M.-| P.M.-| P.M.-|

T
A
B

0 2 2 4 3 5 5/7 5 7 7/9 5 7 7/9 0 2 2 4 3 5 5/7 5 7 7/9 7 9 9/11

F#m G#

T
A
B

9 11 11 9 10 9 10 11 9 11 11 9 10 9 10 11 11 13 13 11 14 11 13 13 11 13 13 11 14 11 13 13

F#m E

TAB: 9 11 11 9 10 9 10 11 | 9 11 11 9 10 9 10 11 | 7 9 7 9 7 9 9 | 7 9 7 9 7 9 9

Gr. 3 B A

TAB: 7 9 9 6 9 6 8 9 | 7 9 9 6 9 6 8 9 | 5 7 7 4 6 4 6 7 | 5 7 7 4 6 4 6 7

Gr. 4 P.M.

TAB: 7 6 9 7 6 7 9 6 | 7 6 9 7 6 7 9 6 | 5 4 7 6 7 6 7 7 | 5 4 7 6 7 6 7 7

Riff G End Riff G

D C#7

TAB: 5 7 7 5 7 5 7 7 | 5 7 7 5 7 5 7 7 | 4 6 6 6 4 6 4 | 7 4 5 7 6 4 6 4

let ring-----|

P.M. P.M. P.M. P.M. P.M.

TAB: 9 12 11 12 10 12 12 | 9 12 11 12 10 12 12 | 4 4 6 4 4 6 4 4 | 6 6 4 4 4 4 4 4

To Coda ⊕ I
To Coda ⊕ II

F#5 D/F# G5 A5 F#/A#

T
A
B (11) 11 12 12 14 16
(8) 9 9 10 12 13

Grtr. 4 tacet
Grtr. 3 B5 F#5 G5 F#5 G5 F#5

P.M.--| P.M.--| P.M.-| P.M.--| P.M.--| P.M.-|

T
A
B 4 4 4 4 4 4 4 4 4 4 4 4 4 5 4 5 4
2 0 0 0 2 0 0 0 2 0 0 2 0 0 0 2 0 0 2 3 0 2 3 0 2

G5 F5 B5 A E Em/G

P.M.--| P.M.--| P.M.-| P.M.--| P.M.--| P.M.-|

T
A
B (4) 5 6 4 4 4 4 4 4 4 4 4 4 2 0 0 2 3
(2) 3 0 3 2 0 0 0 2 0 0 0 2 0 0 0 2 0 0 0 2 0 0 0 2 0 0 0 4 2 0 0 2 3

F#7b9 Cmaj7 Badd11 Badd11/A

Grtrs. 5 & 6: w/ Riff E Grtr. 3 tacet
Grtr. 1

1/2

T
A
B 2 3 1 2 4 5 2 4 5 3 4 6 7 5 7 7 (7) 7 6 7 7 9 7 6 7

Gr. 1

Badd11 D⁹ 8^{va} Gsus2 Asus4

T
A
B

5 9 8 9 9 11 14 16 14 16 16 15 14 19 14 17 14 16 14 15 14 16 14 16

Verse 2 (4:38)

Gr. 1 tacet

B A

I've felt the won - der as the pride left my eyes.

Gtrs. 3 & 4

P.M.+ P.M.+ P.M.+ P.M.

T
A
B

7 7 7 7 5 7 7 5 7 5 7 7 7 7 6 7 7 5 7 5 5 5 7/9 7 7 7 9 7 9

Asus2 B

I've seen the ro - ses as they reach

P.M.+ P.M.+

T
A
B

11 7 9 9 7 0 7 7 7 7 5 7 7 5 7 5 7 7 7 7 6 7 7 5 7

Bsus4/A

ig - no - rant man, — we all de - serve — to burn.

P.M.-----

T
A
B

2 2 2 2 2 2 2 4 2 2 2 2 2 2 2 0 0 0 0 0 0 2 0 0 0 0 0 4 0 0 0

P.M.-----

T
A
B

0 0 4 0 0 0 0 0 0 4 0 0 0 2 0 0 0

Gtr. 3 N.C.

Gtr. 4

T
A
B

5 2 5 2 4 2 4 2 4 2 5 4 2 5 2 5 2 4 2 4 2 4 2 5 4 2 17 14 17 14 16 14 16 14 16 14 16 14 17 16 14 17 14 17 14 16 14 16 14 16 14 16 14 17 16 14

Two systems of guitar notation. Each system consists of a standard notation staff and a TAB staff. The first system has two measures. The second system has two measures. The TAB notation includes fret numbers and bar lines.

Pre-Chorus (5:14)

Pre-chorus section with lyrics: "Ro - ses are red with the blood of the". Includes guitar riffs for strings 3 & 4, labeled "Riff H", with "P.M." markings. Chords F#m and E are indicated. Includes TAB notation for the guitar parts.

Chorus section with lyrics: "dead. See the light for the dark-ness it will be - come." Includes guitar riffs for strings 3 & 4, labeled "End Riff H", with "P.M." markings. Chord D is indicated. Includes TAB notation for the guitar parts.

C#7

Gtr. 3

let ring-----

T	4	6	7	4	6	7	6	7	4	6	7	4
A												
B	4	6	6	4	6	4	6	4	6	6	6	6

Gtr. 4

T	2	4	6	7	4	6	7	6	7	9	6	7	9
A													
B	4	6	8	9	6	8	9	8	9	11	8	9	11

D.S. al Coda I

let ring-----

D°7 C#7

T	7	4	5	7	4	5	7 7	7 7	7 7	7 7	7 7	7 7
A							6 6	6 6	6 6	6 6	6 6	6 6
B	6	4	6	4	6	4	4 4	4 4	4 4	4 4	4 4	4 4

T	7	9	10	7	9	10	6 6	6 6	7 7	7 7	6 6
A							6 6	6 6	6 6	6 6	6 6
B	9	11	12	9	11	12	4 4	4 4	5 5	5 5	4 4

Coda I



Interlude (6:16)

Gr. 1

B

Musical notation for Gr. 1, system B. The staff shows a treble clef with a key signature of three sharps (F#, C#, G#) and a 4/4 time signature. The melody consists of eighth notes with slurs. Below the staff are TAB lines for strings T, A, and B.

TAB: 8 9 8 9 | 8 9 8 9

Gr. 3

Musical notation for Gr. 3, system B. The staff shows a treble clef with a key signature of three sharps and a 4/4 time signature. The melody consists of eighth notes with slurs. Below the staff are P.M. (pedal markings) and TAB lines for strings T, A, and B.

P.M.---| P.M.-----| P.M.---| P.M.-----|

TAB: 9 9 | 9 9 | 9 9 | 9 9

7 7 7 7 | 7 7 7 7 | 7 7 7 7 | 7 7 7 7

D

B

Musical notation for system D. The staff shows a treble clef with a key signature of three sharps and a 4/4 time signature. The melody consists of eighth notes with slurs. Below the staff are TAB lines for strings T, A, and B.

TAB: 11 12 11 13 | 11 9 12 11 | 8 9 8 9

Musical notation for Gr. 3, system D. The staff shows a treble clef with a key signature of three sharps and a 4/4 time signature. The melody consists of eighth notes with slurs. Below the staff are P.M. (pedal markings) and TAB lines for strings T, A, and B.

P.M.--| P.M.---| P.M.--| P.M.---| P.M.--| P.M.---|

TAB: 12 12 | 12 12 | 9 9 | 9 9

10 10 10 10 | 10 10 10 10 | 7 7 7 7 | 7 7 7 7

A

6

Musical notation for system A. The staff shows a treble clef with a key signature of three sharps and a 4/4 time signature. The melody consists of eighth notes with slurs. Below the staff are TAB lines for strings T, A, and B.

TAB: 8 9 8 9 | 6 7 9 7 | 10 9 7 9 7 6

Musical notation for Gr. 3, system A. The staff shows a treble clef with a key signature of three sharps and a 4/4 time signature. The melody consists of eighth notes with slurs. Below the staff are P.M. (pedal markings) and TAB lines for strings T, A, and B.

P.M.--| P.M.---| P.M.--| P.M.---| P.M.--| P.M.---|

TAB: 9 9 | 7 7 | 7 7 | 7 7

7 7 7 7 | 5 5 5 5 | 5 5 5 5 | 5 5 5 5

Gr. 3 B

A/G 1.

G 2.

Gr. 1 N.C. Gr. 3 tacet

* played 2nd time only

Gr. 3 played 1st time only

Gr. 4 cue notes played 2nd time

Gtr. 1

TAB

17 19 20 19 17 20 19	12 15	16 15 12 16 15	15 16 18 16 15	15	17 16 14 16 17 16 14 16 14	14 16 17
16			17		17 16 17	

Gtr. 4

TAB

5 7 8 7 5 8 7		3 4 6 4 3	3	5 4 2 4 5 4 2 4 2	5 4 2 4 5
4	2 4	5 4 2 5 4	5		

TAB

14 16	14 15 17	19 17 15	16	15 17/19 17 15	16 14	16 14
				12 14	12 14 16	

TAB

4 5 2 4 2	4 2 0	2	5 7	5 7 9	7 9	7 9/11 9 7	9 7	9 7
-----------	-------	---	-----	-------	-----	------------	-----	-----

B7^{b9}

TAB

14	14 15 14 12 14	14 15 14 12	14	17 16	14	14 15 14 12	14	14 15 14 12 14	14	14 13
----	----------------	-------------	----	-------	----	-------------	----	----------------	----	-------

TAB

7	7 8 7 5 7	7 8 7 5	7	10	7 9	7	7 8 7 5	7	7 8 7 5 7	7	7 6
---	-----------	---------	---	----	-----	---	---------	---	-----------	---	-----

Guitar Solo (8:05)

Gtr. 1 tacet

Gtr. 7 (dist. w/ delay)

Em6

3 3 3 3 3

1/2 1/2

TAB: 12 15 14 14 17 15 17 15 16 16 19 19 (19) (19) 17 19 17 19 14 17 14 16 14 17

Gtr. 4

TAB: 2 0 0 0 3 0 0 5 0 0 4 0 2 0 0 0 3 0 0 5 0 0 4 0

Bb5 G5 A5 Em6

S.H.

TAB: 16 14 16 14 16 14 18 16 14 16 14 16 15 19 17 15 17 17 17 15 16 15 16 15 18 15

TAB: 2 0 0 0 3 0 0 5 0 0 4 0 2 0 0 8 6 5 7 5 2 0 0 0 3 0 0 5 0 0 4 0

TAB: 16 15 16 15 19 15 16 15 16 15 19 15 17 18 17 15 17 15 17 15 16 15 16 15 16 15 17 14 17 14 14 17

TAB: 2 0 0 0 3 0 0 5 0 0 4 0 2 0 0 0 3 0 0 5 0 0 4 0

6 Bb5 G5 A5 F#7b9

TAB

TAB

TAB

TAB

Bb5 G5 F#5 Em6

TAB

TAB

Gtrs. 5 & 6: w/ Rhy Fig. 1

26

Badd11

D%

8^{va}

Gtr. 2

Gtr. 1

T	16	17	19	16	17	19	19	19	17	19	(19)/15	15	17	15	17/14
A	16	18	16	16	18	16	14	19	14	14	14				
B															

Badd11

(8)

Aadd9

E

T	16	17	19				13	14	16	14	13				
A	16	18	16				14	16	11	12	11	14	16	14	14
B							14	16	11	12	14	14	12/14	14	14

Bridge (9:05)

Gtrs. 1 & 2 tacet

Gtr. 6

Just let go of the pain be -

Gtr. 5

T	0				2				
A	1				3				
B	2				2				0

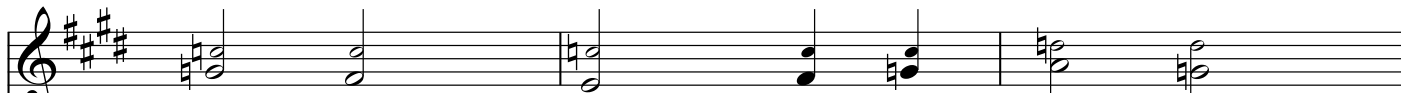
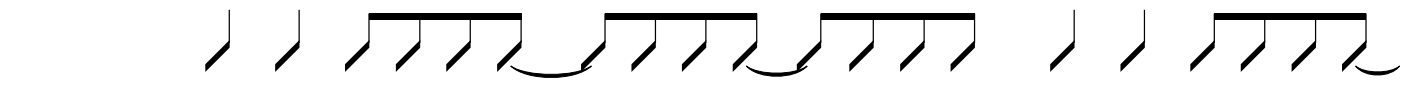
Em

Em

12fr

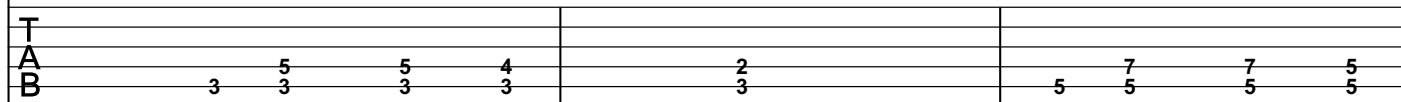
hind those eyes.

T	0				0				
A	2				0				
B	3				0				0

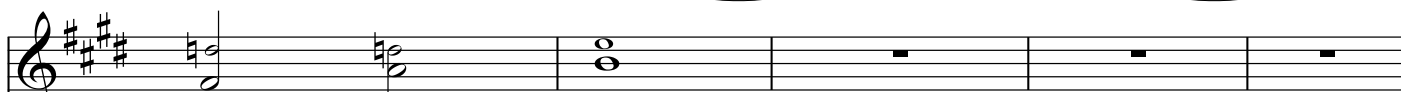
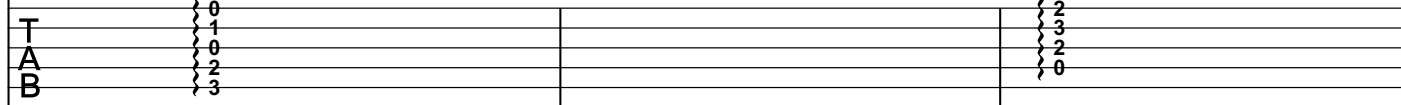
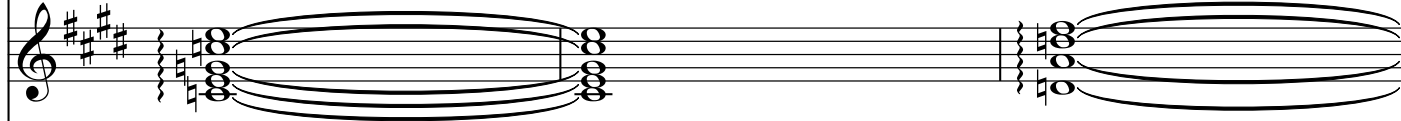


Say good - bye Say to the rage that

Gtr. 3



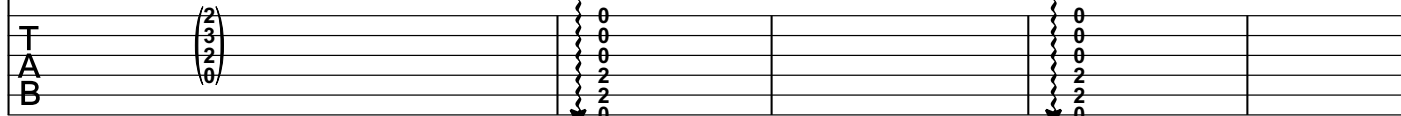
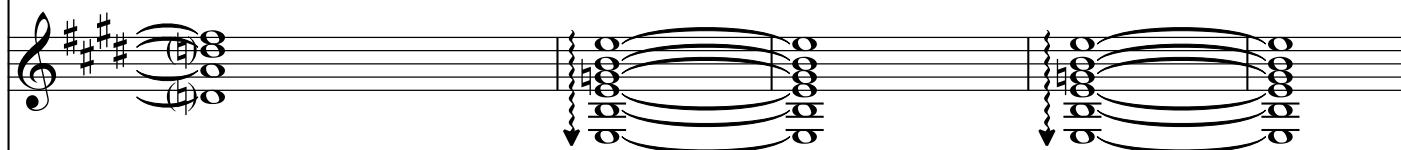
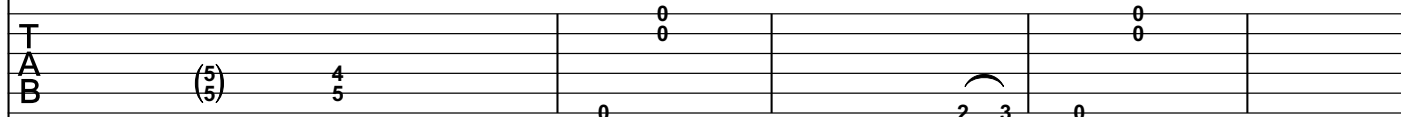
Gtr. 5



ne - ver dies.



let ring-----



D5 A/D Gsus2 D5 A/D E5

mem-ber you're not a lone.

P.M.-----| P.M.-----| P.M.-----| P.M.-----|

T											
A	7		6		7		7		6		9
B	5	5	5	5	5	5	5	5	5	5	5
											7

Pre-chorus (9:52)

Gr. 3: w/ Riff H

F#m E

Light will shine on e - ven af - ter we're gone.

D.S. al Coda II

Gr. 3: w/ Riff G

D C#7

O - pen your eyes to the le - ga - cy you leave be - hind.

Gr. 4

T	3		0	2							
A	2					6	8	10	11	13	14
B	0					4	6	8	9	11	12

Coda II



Gtrs. 1 & 2: w/ Riff A
Gtrs. 3 & 4: w/ Riff B

Outro (10:58)

Gtrs. 1 & 2 tacet
Gtrs. 3 & 4: w/ Riff D (2 times)
Gtrs. 5 & 6: w/ Riff F (6 times)

B 7 Bsus4 A6%

O - pen your eyes and I'll show you the
A wake, a rise.

Bsus4 A6%

light. A-wake and a-rise and step out of the night.
To live, to die.

Bsus4 A6%

Pain and fear will disappear as your body turns to dust. Your
A wake, a rise.

Bsus4 A6%

on-ly sin was giving in. It's time to wake up.
To fall, to fly.

Gtrs. 3 & 4 tacet

B A

Ah.

Gtr. 7

TAB

7	9	9	8	9	11	9	8	9	8	9	9	7	9	9	8	9	11	9	8	9	8	9	9	5	7	7	6	8	9	8	6	8	6	7	7
---	---	---	---	---	----	---	---	---	---	---	---	---	---	---	---	---	----	---	---	---	---	---	---	---	---	---	---	---	---	---	---	---	---	---	---

B

Ah.

TAB

5	7	7	6	8	9	8	6	8	6	7	9	7	9	9	8	9	11	9	8	9	8	9	9	7	9	9	8	9	11	9	8	9	8	9	9
---	---	---	---	---	---	---	---	---	---	---	---	---	---	---	---	---	----	---	---	---	---	---	---	---	---	---	---	---	----	---	---	---	---	---	---

Gtr. 7 tacet
Gtr. 1: w/ Riff C
Gtr. 2: w/ Riff C (first 4 meas.)
Gtrs. 3 & 4: w/ Riff D

A

Bsus4

3

3

3

T
A
B

5 7 7 6 8 9 8 6 8 6 7 7 5 7 7 6 8 9 8 6 8 6 7 9

Gtr. 2

Bsus4

8^{va}

3

3

3

1

1/2

1/2

1

T
A
B

16 17 16 14 16 17 16 14 16 17 16 14 16 14 19 19 19 19 22

Gtrs. 1, 2, 3 & 4 tacet

Gtrs. 5 & 6: w/ Riff E

7

rit.

Gsus2

Asus4

3