

# I Built the Sky

words and music by Tommy Montgomery

Moderately ♩ = 126

Drum cue

**Riff A**

N.C.

Grtr. 1 (dist.)

Musical notation for Riff A, Gtr. 1 (dist.). The staff shows a sequence of eighth notes in a 4/4 time signature. The TAB line below it provides the fret numbers for each note.

Musical notation for Riff A, Gtr. 1 (dist.), continuing with a sixteenth-note triplet and a 'divisi' instruction. The staff and TAB line show the continuation of the riff.

Grtr. 2 tacet

**Riff B**

**End Riff A** Em6

Musical notation for Riff B, Gtr. 2 tacet. The staff shows a sequence of eighth notes. The TAB line below it provides the fret numbers.

Grtr. 1

*tr*

Gsus2

Asus2

Musical notation for Gtr. 1, including a tremolo effect and chord symbols Gsus2 and Asus2. The staff and TAB line show the notes and fret numbers.

Gtrs. 3 (clean) & 4 (acous.)

**Fill 1**

**End Fill 1**

Musical notation for Gtrs. 3 & 4, including a 'let ring' instruction. The staff and TAB line show the notes and fret numbers.

Grtr. 5 (dist. w/ delay)

Musical notation for Grtr. 5 (dist. w/ delay), including a sixteenth-note triplet. The staff and TAB line show the notes and fret numbers.

Em6

F6

Gsus2

Gtrs. 1 & 2

End Riff B

tr  
divisi  
tr

TAB  
0 7 0 0 0 7 | 0 7 0 0 | 0 7 0 0 0 7 | 3 3 3 3 5 5

Gtrs. 3 & 4

Fill 2

End Fill 2

let ring-----|

TAB  
1 3 0 3 3 0 2 0

Gtr. 5

8va-----|

3

TAB  
15 15 (15) | 15 14 12 14 | 14 14 14 17 | 14 15 17 14 16 17 15 17 18 15 17 19

A D/A A D/A A G Gmaj7 G Gmaj7 G A

Gtr. 4

Gtr. 1

P.M.-----| P.M.-----| P.M.-----| P.M.-----|

TAB  
7 5 5 5 5 5 7 | 7 5 | 5 5 5 5 5 5 5 | 3 3 3 3 3 3 5 | 5 | 3 3 3 3 3 3 5 7 5

Gtr. 2

Gtr. 6 (dist.)

TAB  
3 2 | 3 2 | 2 4 | 2 4

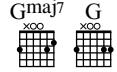
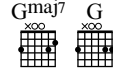
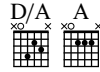
4 2 | 4 2 | 4 5 | 4 5

Gtr. 5 (8)-----|

Gtrs. 5 & 7 (dist. w/ delay)

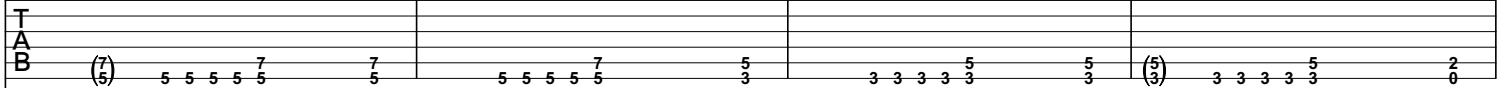
8va-----|

TAB  
17 | 9 | 11 12 9 11 11 12



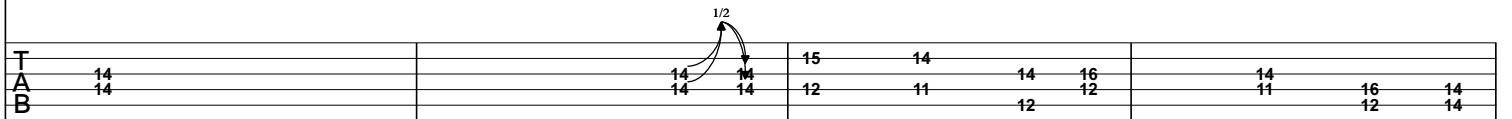
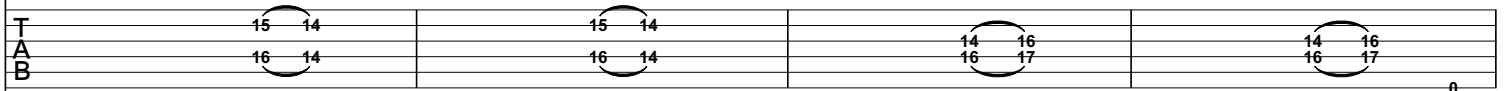
cont. in notation

Gtrs. 1 & 2



Gtrs. 3 & 4

let ring

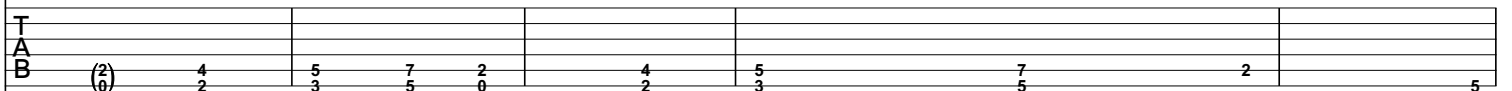


Gtr. 6 tacet

Gtr. 7 tacet

E5 F#5 G Asus4 E5 F#5 G Asus4 B B/A

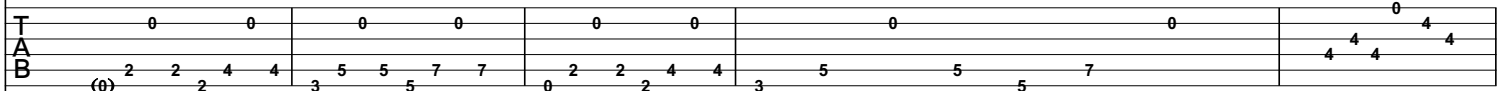
Gtrs. 1 & 2



Gtrs. 3 & 4

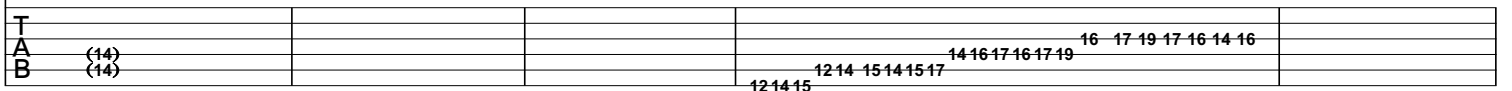


let ring---



Gtrs. 5 & 7

Gtr. 5 6



Gtrs. 1 & 2 B/G# B/A B B/A

Gtrs. 3 & 4

let ring-----

Gtr. 5

Gtr. 7

Gtr. 1 B/G# B/A Cmaj7 D5

Gtr. 2

Gtrs. 3 & 4

let ring-----

Gtr. 5

Gtr. 7

*Verse 1 (1:14)*

Gtrs. 2, 3, 4, 5, & 6 tacet

Gtr. 2 tacet  
A5

A5 G5 D A5

Once u - pon a time I tried to read be - tween the lines. All I ev - er found

Gtr. 1 P.M.-----| P.M.-----| P.M.-----| Gtr. 2 7 P.M.-----|

T							15									
A	7	7	7	7	7		11 12 7	12 11 12 14 12 11		7	7	7				
B	7	5	5	5	5	5	4 5	5 4 5 7 5 4 12/0		7	7	7				
	5	5	5	5	5	5				5	5	5	5	5	5	5

Fsus2 Gsus2 Bb

was the emp - ti - ness in - side.

Gtr. 1 P.M.-----| P.M.-----| let ring-----|

T									0			0				
A	(7)					7										
B	(7)	5	5	5	5	5	7	7		5	5	5	5	5	5	1
	5	5	5	5	5	5				1	3	3	3	5	1	

Gtrs. 3 & 4

let ring-----| Gtrs. 2 & 6

T									0			0				
A																
B																

*Pre-chorus (1:29, 5:21)*

Gtrs. 3 & 4 tacet

C

1. But still life goes on and I'll  
2. And I'll al - ways know that when

Gtr. 1 (b) 3 3 2 3 1 3 3 2 3 5 5 3 5 3

T																
A																
B	(4)	3	3	2	3	1	3	3	2	3	5	5	3	5	3	

Gtrs. 2 & 6

P.M.---| P.M.---| P.M.---|

T																
A																
B	(3)															
	(1)	3	3	3			3	3	5		5	5	5			
		1	1	1			1	1	3		3	3	3			
		1	1	1			1	1	3		3	3	3			





Chorus (1:44, 3:46, 5:37)

Gtrs. 6 & 8 tacet

G

Fsus2

1., 2. I  
3. You

built the sky.  
built the sky.

Gtr. 1 Riff C1

let ring-----|

TAB (3 2 0) | 3 3 0 | 0 3 3

Gtrs. 3 & 4 Riff C2

let ring-----|

TAB (2 3 0) | 2 2 3 2 2 3 3 3 3 3 | 3 3 3 3 3 1 | 0 3 3

End Riff C2

Gtrs. 2 & 6 Riff C3

let ring-----|

TAB (7 5 5) | 5 5 3 | 1 3 0 3 3

End Riff C3

Gtr. 5

Gtr. 7

TAB (14) (12) (12) 14 11 12 | 13 15 13 | 9 10 9

D

Gtrs. 2, 3, 4 & 6 tacet

Gtr. 1

End Riff C1

TAB 0 5 0 | 0 5 7 | 0 5 4 0 5 0 7 0 7 0 | 0 5 0 | 0 5 0 4 3 (3) 5 4 5 5 7 7 8

Gtr. 5

Gtr. 7

TAB 15 | 12

8 Gtr. 1: w/ Riff C1  
Gtrs. 3 & 4: w/ Riff C2 G F#sus2 D  
Gtr. 2: w/ Riff C3 D  
Gtrs. 2, 3, 4 & 6 tacet

I ne - ver asked why. And  
You al - ways knew why. And

Gtr. 5  
Gtr. 7

T									
A	14	(12) 14	11	12	13	15	13	12	15
B	12			12	10				14

Gtrs. 5 & 7 tacet

C5 Bb5 Ab5 Eb5 Bb5 Gb5 C# C#sus4 C# A

when it falls, and sha - tters all, I will not des - pair  
when I fall you must stand tall. There's no - thing to fear

Gtrs. 1 & 2

P.M.-----| P.M.-| P.M.-----| P.M.-| P.M.-|

T																			
A	5	3			8	8	4		6	7	6		6	6	2				
B	5	3	6		6	8	4		6	6	6		4	4	4	4	0		
			4		4	4	4	4	4	4	4		2	2	2	2	2	2	2

To Coda ☐☐ To Coda ☐ Gtrs. 1 & 2: w/ Riff B Gtrs. 3 & 4: w/ Fill 1

C D Em6 Gsus2 Asus2

— be-cause you'll still be right there.  
— be-cause

Gtr. 5

P.M.----| P.M.---|

T																			
A	(2)	7	6	7	5	5	7	7	16	14	16	14	13	14	13	13	(13)	12	14
B	(0)	7	7	7	0	2	3	3	3	3	3	3	5	5	5	5	5	12	14

Gtrs. 3 & 4: w/ Fill 2 Verse 2 (2:34)

Em6 F6 Gsus2 A Gtr. 5 tacet

Once u - pon a time I saw the

Gtr. 5  
Gtr. 1

P.M.----| P.M.----|

Riff D

T																			
A	17	15	17	15	15	17	15	14	14	(14)	12	14	19	15	15	17			
B													16	17	17	16	15	17	17
													15	15	15	15	5	5	5



G5 D/F# G5 D/F# G D/F# A

clouds roll a - cross the sky. As the rain fell

P.M.-----| P.M.-----| P.M.-----|

TAB (7/5) 5 5 5 5 5 5 3 2 3 2 3 2 7 5 5 5 5 5 7 7 5

I felt a pain in my eye.

G D

End Riff D

P.M.-----| P.M.-----|

TAB (7/5) 5 5 5 5 5 5 5 5 5 5 5 5 5 3 2 3 5 5 4 5 7

\* Cue notes played first time only

w/ Riff C (Gtr. 1)  
w/ Riff A (Gtr. 2)

A G5 D/F# G5 D/F# G D/F# A

When I looked up I saw that the sky was bare.

G D

All of my pain was the ab - sence of your stare.

Bridge (3:04)

Dm

There I was try - - ing to

Gtr. 6 Rhy. Fig. 1

TAB 7 7 5 5

Gtr. 1 Riff E

slight P.M. next 8 measures

TAB 0 8 0 0 7 0 0 5 0 0 4 0 5 0 7 0 0 8 0 0 7 0 0 5 0 0 4 0 5 0 7 0

A

find a way out.

End Rhy. Fig. 1

TAB

7	7
5	5
5	5

End Riff E

TAB

0	8	0	0	7	0	0	5	0	0	4	0	5	0	7	0	0	2	0	0	4	0	0	5	0	0	7	0	8	0	7	0
---	---	---	---	---	---	---	---	---	---	---	---	---	---	---	---	---	---	---	---	---	---	---	---	---	---	---	---	---	---	---	---

w/ Rhy. Fig. 1 (Gtr. 6)  
w/ Riff E (Gtr. 1)

Dm

All the time wast - ed in fear and in doubt.

Gm

Build - ing my pri - son one brick at a time.

End Rhy. Fig. 2

Gtr. 6 Rhy. Fig. 2

P.M.----| P.M.----| P.M.----| P.M.---|

TAB

5	5	5	5	5	7	5	5	5	5
3	3	3	3	3	3	3	3	3	3
3	3	3	3	3	3	3	3	3	3

Riff F

Gtrs. 1 & 2

End Riff F

TAB

0	8	0	0	7	0	0	5	0	0	4	0	5	0	7	0	0	8	0	0	7	0	0	5	0	0	7	0	0	2	0	0	4	0	0	5	0	0	7	0	8	0	7	0
---	---	---	---	---	---	---	---	---	---	---	---	---	---	---	---	---	---	---	---	---	---	---	---	---	---	---	---	---	---	---	---	---	---	---	---	---	---	---	---	---	---	---	---

Gtr. 6: w/ Rhy. Fig. 2  
Gtr. 1: w/ Riff F

Gm

You made me break through and reach for the sky.

Gtr. 2

TAB

0	12	0	0	10	0	0	8	0	0	7	0	8	0	10	0	0	12	0	0	10	0	0	8	0	0	7	0	8	0	10	0	0	5	0	0	7	0	0	8	0	0	10	0	13	0	12	0
---	----	---	---	----	---	---	---	---	---	---	---	---	---	----	---	---	----	---	---	----	---	---	---	---	---	---	---	---	---	----	---	---	---	---	---	---	---	---	---	---	---	----	---	----	---	----	---

Gtrs. 2 & 6 tacet

D5 C5 F5 C/E G5 Asus2

And

Musical score for Gtr. 1 and Gtr. 4. Includes guitar tablature for both parts.

**Gtr. 1**

Tablature: 7 5 5 5 5 7 5

**Gtr. 4**

Tablature: 3 3 3 3 3 0 3 3 3 3 2 0 2 0

Gtrs. 3 & 4 tacet

Bb5

C5

D.S. al Coda

Vocal line with lyrics: all this time I ne-ver knew that

**Gtr. 1**

Tablature: 6 6 6 6 6 6 6 6 8 6 6 6 6 6 6 6 8 10 7 8 10 7 8 10 7 9 10 8 10 11 8

**Gtr. 2**

Tablature: 3 3 1 1 1 1 1 3 3 5 3 3 3 3 3 5 5 5 3



### Guitar Solo (4:21)

Gr. 2 tacet

C#m      A      B      E      F#m7      E/G#

there.

Gr. 5

Gr. 7

Gr. 1

P.M.-----|      let ring---

Detailed description of the first system: This system contains three guitar parts. Gr. 5 (Guitar 5) has a treble clef staff with a melodic line and a TAB staff with fret numbers 12, 12, (12), 11, 12, 12, 14, 11, 12, 14, 12, 11, 12. Gr. 7 (Guitar 7) has a treble clef staff with a more complex melodic line and a TAB staff with fret numbers 11, 11, (11), 11, 12, 12, 14, 12, 14, 14, 16, 14, 16, 14, 17, 14, 16, 14, 13, 14, 14. Gr. 1 (Guitar 1) has a treble clef staff with a rhythmic accompaniment and a TAB staff with fret numbers 6, 4, 2, 0, 0, 2, 4, 0, 4, 4, 2, 2, 2, 0, 2, 2, 4.

A      E      F#7      Bm      G

8va-----|

8va-----|

let ring-----|      P.M.-|      P.M.-|      P.M.-|      let ring-----|

Detailed description of the second system: This system continues the guitar parts. Gr. 5 has a treble clef staff with a melodic line and a TAB staff with fret numbers 19, 17, 19, 17, 18, 19, 18, 16, 18, 19, 19, 18, 16, 16, 16. Gr. 7 has a treble clef staff with a melodic line and a TAB staff with fret numbers 17, 16, 14, 13, 14, 16, 14, 13, 14, 12, 11, 14, 13, 14, 13, 14, 16, 14, 16, 15, 17, 14, 17, 17, (17), 16. Gr. 1 has a treble clef staff with a rhythmic accompaniment and a TAB staff with fret numbers 0, 0, 0, 2, 0, 0, 0, 2, 4, 3, 0, 0, 4, 4, 0, 2, 3, 0, 0, 4, 4, 0, 2, 3.

Musical staff with treble clef, key signature of three sharps (F#, C#, G#), and a common time signature. It features a triplet of eighth notes, a measure with a fermata over a dotted quarter note, and a measure with a triplet of eighth notes. Chord markings 'A' and 'D#11' are present above the staff. A dashed line with a circled '8' and a '7' indicates a measure repeat.

Tablature for the first system, showing fret numbers for strings T, A, and B. The sequence of frets is: 19 17 19 17, 19 18, 14 13 13, (13), 11 13 14, 12, 14. A '1/2' slur is shown over the 13 and 13 frets.

Musical staff with treble clef, key signature of three sharps, and a common time signature. It features a triplet of eighth notes, a measure with a fermata over a dotted quarter note, and a measure with a triplet of eighth notes. Chord markings 'T' and 'T' are present above the staff.

Tablature for the second system, showing fret numbers for strings T, A, and B. The sequence of frets is: (16) 24 16 23, 17 16, 15 14 15 14, 16 14, 14 13 13, (13), 12 14 16, 13, 14. A '1/2' slur is shown over the 13 and 13 frets.

Musical staff with treble and bass clefs, key signature of three sharps, and a common time signature. It features a triplet of eighth notes, a measure with a fermata over a dotted quarter note, and a measure with a triplet of eighth notes. Chord markings 'P.M.' and 'P.M.-1' are present below the staff.

Tablature for the third system, showing fret numbers for strings T, A, and B. The sequence of frets is: (3) 3 3 3 3 3 3 3 3, 2 2 0, 7 5, 5 5 5 5 5 5 5 5.

Musical staff with treble clef, key signature of three sharps, and a common time signature. It features a triplet of eighth notes, a measure with a fermata over a dotted quarter note, and a measure with a triplet of eighth notes. Chord markings 'E', 'C#/E#', 'Bm/F#', and 'E/G#' are present above the staff. A dashed line with a circled '8' and a '7' indicates a measure repeat.

Tablature for the fourth system, showing fret numbers for strings T, A, and B. The sequence of frets is: 15 13 14 16 14 15, 18 14 16 18 15 18, 19 16 18 19 17 19, 21 (21). A '1/2' slur is shown over the 21 and (21) frets.

Musical staff with treble clef, key signature of three sharps, and a common time signature. It features a triplet of eighth notes, a measure with a fermata over a dotted quarter note, and a measure with a triplet of eighth notes.

Tablature for the fifth system, showing fret numbers for strings T, A, and B. The sequence of frets is: 16 14 16 18 14 16, 18 11 13 14 12 14, 15 13 14 16 14 15, 17.

Musical staff with treble and bass clefs, key signature of three sharps, and a common time signature. It features a triplet of eighth notes, a measure with a fermata over a dotted quarter note, and a measure with a triplet of eighth notes. Chord markings 'P.M.-1', 'P.M.-1', 'P.M.-1', 'P.M.-1', 'P.M.-1', 'P.M.-1', 'P.M.-1', 'P.M.-1', 'P.M.-1', and 'P.M.' are present below the staff.

Tablature for the sixth system, showing fret numbers for strings T, A, and B. The sequence of frets is: 9 7 7 7 7 7 7 7, 11 8 8 8 8 8 8 8, 12 9 9 9 9 9 9 9, 7 7 7 7 7 7 7 7.

Gtr. 5 (8) A

Gtrs. 5 & 7 tacet

Gtr. 5 (8) A

Gtr. 7

Gtr. 7

Gtr. 1

Gtr. 1

TAB

Gtr. 2

Gtr. 2

TAB

Gtr. 6

Gtr. 6

TAB

Gtr. 1

E7/G#

A5

Gtr. 1

TAB

Gtr. 2

Gtr. 2

TAB

Gtr. 6

Gtr. 6

TAB

Gtr. 6 tacet

Gtr. 1

G/A A A5 G/A Dm/A E7/A A5 G/A

P.M. ↓ P.M. ↓ P.M. ↓

T A B (2) 0 0 5 4 7 0 6 4 6 2 5 4 10 9 7 9 2 5 4 7

Gtrs. 2 & 6

Gtr. 2

T A B (2) 14

Gtrs. 1 & 4

Gtr. 1

A Cadd9 G/B Cadd9 D5

D.S.S. al ♪ ♪

Gtr. 4 tacet

T A B 6 4 6 3 3 3 3 3 0 7 0 5 0 7 3 0 3 0 3 2 0 3 1

Gtr. 2

T A B 14 14 14 14 14 14 14 14 14 14 14 14 14 14 14 14 12 13 15 13 12 13 15 12 15 13 15 13 12 13 12 14 12 15 13 15 13 14 12 12 10 12 10 12 10 13

♩ ♩ C D Em6 w/ Riff B (Gtrs. 1 & 2)

I'll still be right here.

Gtrs. 1 & 2

P.M. ----- ↓ P.M. ----- ↓

T A B 5 5 7 7 3 3 3 3 3 5 7 7 5 5 5 5 5 5 5 5

Gtr. 5

8va ----- |

T A B 12 12 15 15 12 12 13 13 15 14 17 22 17 15 14 15 17 22 17 15 14 15 17 24 15 15 14 14 12 12 13 13 15 16 14 15 17 16

Gtrs. 3 & 4: w/ Fill 1

Gtrs. 3 & 4: w/ Fill 2

Gtr. 5

Gsus2 Asus2 Em6 F6 Gsus2

T		17	15 17	15	15 14 12	14		15 17 18	15 17 19
A						14		14 15 17	14 16 17
B						14 17			

Gtr. 5 (8) A5

G/A G/A A A5 G/A Dm/A

Gtr. 5 tacet

Gtrs. 1 & 2 P.M.-----| P.M.-+ P.M.-+ P.M.-+ P.M.-+ P.M.-+ P.M.-+ P.M.-----| P.M.-+

T	17								
A	2	5	4	7	6	4	6	5	10
B	0	0	0	0	0	0	0	0	0

Gtrs. 1 & 2 E7/A A5 G/A A

P.M.-+ P.M.-+ P.M.-+ P.M.-+ P.M.-----| P.M.-+ P.M.-+ P.M.-+ P.M.-+ P.M.-+

T									
A	9	7	9		5	4	7	6	
B	0	0	0	0	0	0	0	0	0

Gtr. 4 Cadd9 G/B Cadd9 Asus2

T	3	3	3	0	0	0	3	3	3	3	2	0	2	0
A	0	0	0	2	2	2	2	2	2	2	2	2	2	0
B	3	2	3	0	0	0	0	0	0	0	0	0	0	0

Gtrs. 1 & 2

T	3	3	3						
A	0	0	0	2					
B	3	2	3	0					

Gtr. 3

T				0					0
A				2					2
B				2					2



Gtr. 2 tacet  
N.C.

Gtrs. 3 & 4 tacet

Gtr. 2 A5

T  
A  
B

Gtr. 1

T  
A  
B

Gtr. 5 <sup>8va</sup>

T  
A  
B