

End Riff A

B5 G5 D5 A5

TAB: (14) 12 16 16-14 13 14 14-13 14 16 14 12 14/12

End Riff B

TAB: 4 4 4 4 4 4 4 4 4 4 4 4 3 3 2 2 2 2 2 3 5

P.M.--| P.M.--| P.M.↓ P.M.--| P.M.--| P.M.↓

Riff C
Bsus4

Gtrs. 1 & 2

TAB: 16 18 16 14 16 18 16 14 16 14 16 16 1/2 16 16 16 16 16

Bsus4/A

Riff D

Gtrs. 3 & 4

TAB: 2 2 4 2 2 4 2 4 2 2 4 2 0 2 4 0 2 4 2

P.M.-----

Bsus4

TAB: (16) 18 16 14 16 16 18 16 14 16 18 16 14 16

TAB: 4 0 2 4 0 2 4 4 2 2 4 2 2 4 2 2

P.M.-----| 1/2 P.M.-----

End Riff C

Bsus4/A

T
A
B

End Riff D

P.M.-----

T
A
B

Gtr.1: w/ Riff C
Gtrs. 3 & 4: w/ Riff D

Bsus4 Bsus4/A

8^{va}-----

Gtr. 2

T
A
B

Bsus4 Bsus4/A

(8)-----

T
A
B

Gr. 4 tacet

4

Em

D/F#

B

Gr. 2

(8)

TAB notation for Gr. 2: 17 17 15 19 19 17 15 17 15 19

Gr. 1

8va

TAB notation for Gr. 1: 19 19 17 20 20 19 17 19 17 20

Gr. 3

TAB notation for Gr. 3: 2/2/0, 5/2, 4/4/2

Am/C

N.C.

Cmaj7

(8)

TAB notation for the second system: 15 17 15 17, 19 17 16 17 16, 17 16 17 16 19 18 19, 16 17 16 17 20

TAB notation for the third system: 16 17 16 19, 11 9 8 10 9, 10 9 12 11 12 9 10 9 10 8 9, 12

TAB notation for the fourth system: 2/2/3, 5/3/3, 5/3/3

Riff E

Badd11

Badd11/A

Gtrs. 5 (clean w/ chorus) & 6 (acous.)

Musical notation for Riff E, measures 1-4. The guitar staff shows a melodic line in treble clef with a key signature of three sharps. The guitar tablature below it shows fret numbers: 7, 9, 9, 8, 9, 7, 9, 9, 0, 8, 8, 9, 0, 8, 8, 9.

Gtr. 3

Musical notation for Gtr. 3, measures 1-4. The guitar staff shows a sustained chord in treble clef with a key signature of three sharps. The guitar tablature below it shows fret numbers: 4, 2, 2.

Gtr. 3 tacet

End Riff E

Badd11

D⁶/₉

Gsus2

Asus4

Musical notation for Riff E continuation, measures 5-8. The guitar staff shows a melodic line in treble clef with a key signature of three sharps. The guitar tablature below it shows fret numbers: 7, 9, 9, 8, 9, 7, 9, 9, 10, 12, 12, 11, 12, 3, 0, 0, 2, 0, 2.

Verse 1 (1:41)

Bsus4

A⁶/₉

A- wake, _____

a- rise, _____

Riff F

End Riff F

Musical notation for Riff F, measures 1-4. The guitar staff shows a melodic line in treble clef with a key signature of three sharps. The guitar tablature below it shows fret numbers: 0, 0, 0, 4, 0, 0, 0, 4, 0, 4, 2, 0, 4, 0, 4, 4, 2, 0, 4.

Gtrs. 5 & 6: w/ Riff F (3 times)

Bsus4

A⁶/₉

Bsus4

and let the sun _____ o - pen your eyes. _____

A- lign _____

Musical notation for Verse 1 continuation, measures 5-8. The guitar staff shows a melodic line in treble clef with a key signature of three sharps. The guitar tablature below it shows fret numbers: 0, 0, 0, 4, 0, 0, 0, 4, 0, 4, 2, 0, 4, 0, 4, 4, 2, 0, 4.

A⁶/₉ Bsus4

your mind. You were ne -

A⁶/₉

- ver that blind.

Gtrs. 5 & 6: w/ Riff E
Gtr. 1 Badd11 Badd11/A

T
A
B

7 6 7 7 9 7 6 7 5

Badd11 D⁶/₉ Gsus2 Asus4

T
A
B

9 8 9 9 11 11 12 14 14 14 12 10 12

Verse 2 (2:25)

Gtr. 1 tacet

Gtrs 5 & 6: w/ Riff F (4 times)

Bsus4 A⁶/₉

To live, to die.

Gtrs. 3 & 4

T
A
B

2 4 4 2 2 4 4 2 4 2 2 0 4 2 2 2 2 2

Bsus4 A6%

Just clip your wings and you'll fly.

T
A
B

2 4 4 2 2 2 2 4 4 2 2 4 2 2 0 0 0 0 4 2 2 2 2 2

Bsus4 A6%
w/ Riff D (Gtrs. 3 & 4)

Give up, give in.

Bsus4 A6%

Don't let the mad - ness be- gin.

Gtr. 4 tacet

Esus2 Gsus2 Asus2 Esus2 Gsus2 Asus2 Bsus2

Gtr. 3

P.M.-| P.M.-| P.M.-| P.M.-| P.M.-| P.M.-| P.M.-| P.M.-|

T
A
B

0 2 2 4 3 5 5/7 5 7 7/9 5 7 7/9 0 2 2/4 3 5 5/7 5 7 7/9 7 9 9/11

F#m G#

T
A
B

9 11 11 9 10 9 10 11 9 11 11 9 10 9 10 11 11 13 13 11 14 11 13 13 11 13 13 11 14 11 13 13

F#m E

TAB

T		9	10	9	10		9	10	9	10		7	9	7	9		7	9	7	9
A		11		11		11		11		11		9		9		9		9		9
B		9					9					7				7				9

Gr. 3 B A

TAB

T			6	9	6	8		6	9	6	8		4	6	4	6		4	6	4	6	
A		9		9		9		9		9		7		7		7		7		7		7
B		7		9			7		9			5		7		7		5		7		7

Gr. 4 P.M.

TAB

T			6	9	7	6		6	9	7	6		6	7	6	7		6	7	6	7	
A		7		9		7		9		7		9		7		7		5		4		7
B		7		6		9		7		6		7		9		6		5		4		7

Riff G End Riff G

D C#7

TAB

T			5	7	5	7		5	7	5	7		4		6		7		4		5		7	
A		7		7		7		7		7		7		6		6		6		6		6		6
B		5		7			5		7			5		4		6		4		6		4		6

P.M. P.M. P.M. P.M. P.M.

TAB

T			11	12	10	12		11	12	10	12				6		6		6		6		6	
A		9		12		12		9		12		12		4		4		4		4		4		4
B		9					9					12		4		4		4		4		4		4

G5 D5 A5

wash - ing a - way_ the pain. —

P.M.---| P.M.---| P.M.-|

Gr. 4

T				3	3	2	2	3	5
A	4	4	4	0	0	2	2		
B	4	4	4	0	0	0	0		
	2	0	0	0	2	0	0	0	3

F#5 C#7 Dmaj7

A - wake to day, _____ to - mor - row_ the

P.M.--| P.M.--| P.M.-| P.M.--| P.M.--| P.M.-| P.M.--|

T							6	6	7
A	4	4	4	4	4	4	4	4	6
B	4	4	4	4	4	4	6	6	7
	2	0	0	0	2	0	0	0	4
							4	4	4
							4	4	4
							4	4	5

E5 C#/E#

dark - ness _____ will fade back _____ to light.

P.M.-----| P.M.-----|

T		7		7			9		9	
A		6		6		9	9		9	11
B		7		7		7	7		7	8
		5	5	5	5	5	7	7	7	7

Gr. 1

Badd11 D⁹ 8^{va} Gsus2 Asus4

T
A
B

Verse 2 (4:38)

Gr. 1 tacet

B A

I've felt the won - der as the pride left my eyes.

Gtrs. 3 & 4

P.M.+ P.M.+ P.M.+ P.M.

T
A
B

Asus2 B

I've seen the ro - ses as they reach

P.M.+ P.M.+

T
A
B

Two systems of guitar notation. Each system consists of a standard musical staff and a TAB staff. The first system has two measures. The second system has two measures. The TAB notation includes fret numbers and bar lines.

Pre-Chorus (5:14)

Pre-chorus section with lyrics: "Ro - ses are red with the blood of the". Includes guitar riffs for strings 3 & 4, labeled "Riff H", with "P.M." markings. Chords F#m and E are indicated. Includes TAB notation for strings 3 & 4.

Chorus section with lyrics: "dead. See the light for the dark-ness it will be - come." Includes guitar riffs for strings 3 & 4, labeled "End Riff H", with "P.M." markings. Chord D is indicated. Includes TAB notation for strings 3 & 4.

C#7

Gtr. 3

let ring-----

T	4	6	7	4	6	7	6	7	4	6	7	4
A	6	6	6	6	6	6	6	6	6	6	6	6
B	4	6	4	6	4	4	6	4	4	4	4	6

Gtr. 4

T	2	4	6	7	4	6	7	6	7	9	6	7	9
A													
B	4	6	8	9	6	8	9	8	9	11	8	9	11

D.S. al Coda I

let ring-----

D°7

C#7

T	7	4	5	7	4	5	7 7	7 7	7 7	7 7	7 7	7 7
A	6	6	6	6	6	6	6 6	6 6	6 6	6 6	6 6	6 6
B	6	4	4	4	6	6	4 4	4 4	6 6	6 6	6 6	4 4

T	7	9	10	7	9	10	6 6	6 6	7 7	7 7	6 6	
A							6 6	6 6	6 6	6 6	6 6	6 6
B	9	11	12	9	11	12	4 4	4 4	5 5	5 5	5 5	4 4

Coda I



Interlude (6:16)

Gr. 1 B

T
A
B

8 9 8 9

Gr. 3

P.M.---| P.M.-----| P.M.---| P.M.-----|

T
A
B

9 9 9 9

7 7 7 7 7 7 7 7

D B

T
A
B

11 12 11 13

P.M.--| P.M.---| P.M.--| P.M.---| P.M.--| P.M.---|

T
A
B

12 12 12 12

10 10 10 10 10 10 10 10

A

T
A
B

8 9 8 9

P.M.--| P.M.---| P.M.--| P.M.---| P.M.--| P.M.---|

T
A
B

7 7 7 7

5 5 5 5 5 5 5 5

Gr. 3 B

A/G 1.

G 2.

Gr. 1 N.C. Gr. 3 tacet

* played 2nd time only

Gr. 3 played 1st time only
Gr. 4 cue notes played 2nd time

Gtr. 1

TAB

17 19 20 19 17 20 19	12 15	16 15 12 16 15	15 16 18 16 15	15	17 16 14 16 17 16 14 16 14	14 16 17
16			17		17 16 17	

Gtr. 4

TAB

5 7 8 7 5 8 7		3 4 6 4 3	3	5 4 2 4 5 4 2 4 2	5 4 2 4 5
4	2 4	5 4 2 5 4	5		

TAB

14 16	14 15 17	19 17 15	16	15 17/19 17 15	16 14	16 14
				12 14	12 14 16	

TAB

4 5 2 4 2	4 2 0	2	5 7	5 7 9	7 9	7 9/11 9 7	9 7	9 7
-----------	-------	---	-----	-------	-----	------------	-----	-----

B7^{b9}

TAB

14	14 15 14 12 14	14 15 14 12	14	17 16	14	14 15 14 12	14	14 15 14 12 14	14	14 13
----	----------------	-------------	----	-------	----	-------------	----	----------------	----	-------

TAB

7	7 8 7 5 7	7 8 7 5	7	10 9	7	7 8 7 5	7	7 8 7 5 7	7	7 6
---	-----------	---------	---	------	---	---------	---	-----------	---	-----

Guitar Solo (8:05)

Gtr. 1 tacet

Gtr. 7 (dist. w/ delay)

Musical notation for Gtr. 7 (dist. w/ delay) in treble clef, key of D major. It features a melodic line with triplets and a chromatic descending line. A chord change to Em6 is indicated above the staff. The notation includes slurs and accents.

TAB notation for Gtr. 7 (dist. w/ delay). The first system shows fret numbers 12-15, 14-17, 15-16, 17-19. The second system shows 19, 19, (19), 17-19-17. The third system shows 19, 14-17, 14-16.

Gtr. 4

Musical notation for Gtr. 4 in treble clef, key of D major. It features a melodic line with slurs and accents.

TAB notation for Gtr. 4. The first system shows fret numbers 2, 0, 0, 0, 3, 0, 0. The second system shows 5, 0, 0, 4, 0. The third system shows 2, 0, 0, 0, 3, 0, 0.

Bb5 G5 A5 Em6

Musical notation for Gtr. 4 in treble clef, key of D major. It features a melodic line with slurs and accents. A chord change to Em6 is indicated above the staff.

S.H.

TAB notation for Gtr. 4 (continued). The first system shows fret numbers 16, 14-16, 14-16, 14-18-16-14. The second system shows 16, 14-16. The third system shows 15-19-17-15, 17, 17, 17-15, 16-15-16, 15-18-15.

Musical notation for Gtr. 4 in treble clef, key of D major. It features a melodic line with slurs and accents.

TAB notation for Gtr. 4 (continued). The first system shows fret numbers 2, 0, 0, 0, 3, 0, 0. The second system shows 5, 0, 0, 4, 0. The third system shows 2, 0, 0, 8, 5, 7, 5. The fourth system shows 2, 0, 0, 0, 3, 0, 0.

Musical notation for Gtr. 4 in treble clef, key of D major. It features a melodic line with slurs and accents.

TAB notation for Gtr. 4 (continued). The first system shows fret numbers 16-15-16, 15-19-15, 16-15-16, 15-19, 15-17-18-17-15, 17-15. The second system shows 17-15, 17-15, 16-15-16, 15, 16-15, 17-14-17-14, 14, 17.

Musical notation for Gtr. 4 in treble clef, key of D major. It features a melodic line with slurs and accents.

TAB notation for Gtr. 4 (continued). The first system shows fret numbers 2, 0, 0, 0, 3, 0, 0. The second system shows 5, 0, 0, 4, 0. The third system shows 2, 0, 0, 0, 3, 0, 0.

6 Bb5 G5 A5 F#7b9

TAB

TAB

TAB

TAB

Bb5 G5 F#5 Em6

TAB

TAB

Gtrs. 5 & 6: w/ Rhy Fig. 1

26

Badd11

D%

8^{va}

Gtr. 2

Gtr. 1

T	16	17	19	16	17	19	19	19	17	19	19/15	17	15	14	
A	16	18	16	16	18	16	14	19	14	14	14	15	17	15	17/14
B															

Badd11

(8)

Aadd9

E

T	16	17	19				13	14	16	14	13	16	14	16	14
A	16	18	16				14	16	11	12	11	14	12/14	16	14
B							14	16	11	12	14	14	14	14	14

Bridge (9:05)

Gtrs. 1 & 2 tacet

C

D

Gtr. 6

Just let go of the pain be -

Gtr. 5

T	0			2		
A	1			3		
B	2			2		
	3			0		

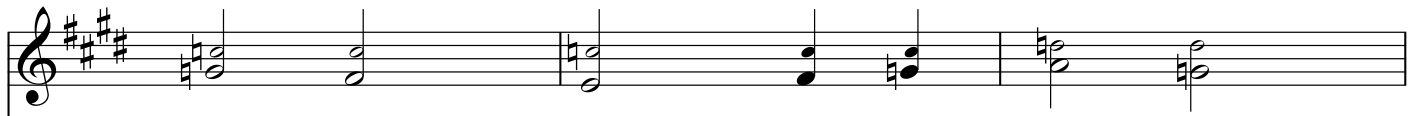
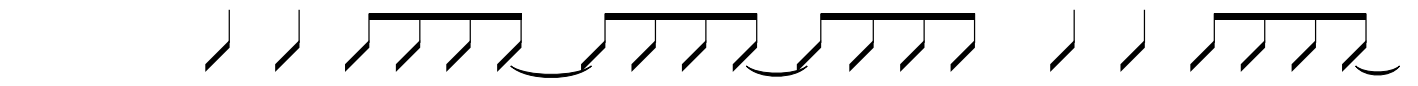
Em

Em

12fr

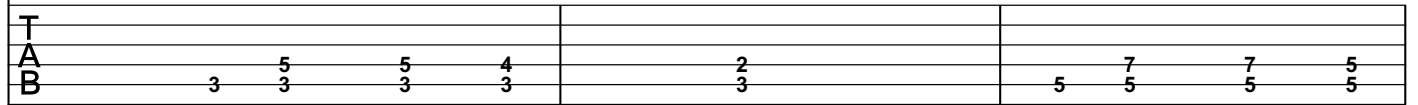
hind those eyes.

T	2			0		
A	3			0		
B	2			0		
	0			0		

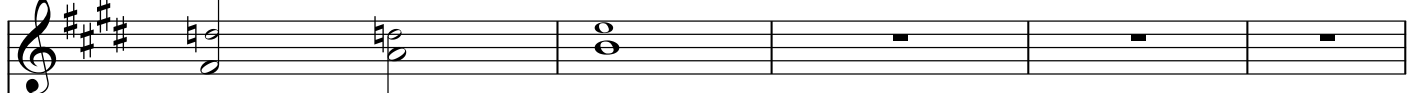
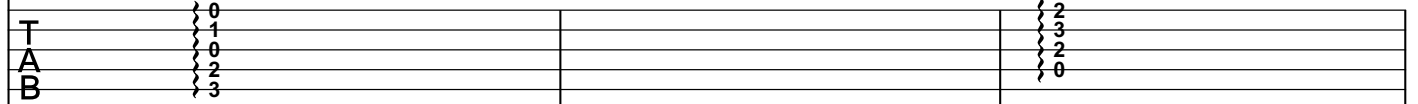
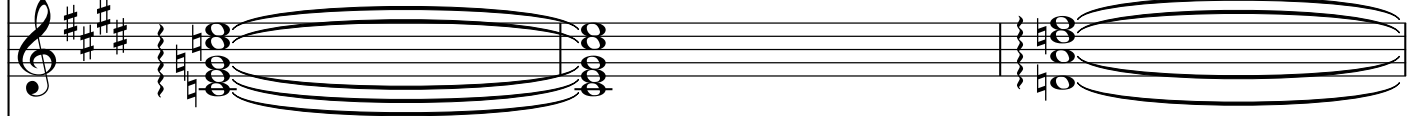


Say good - bye Say to the rage that

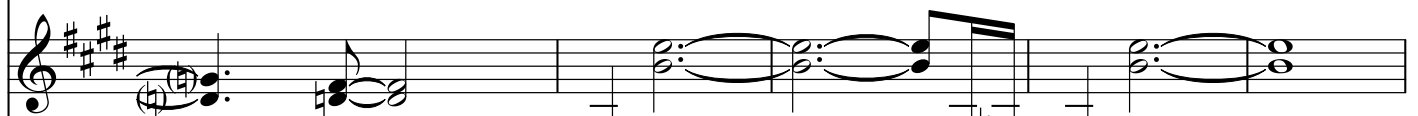
Gtr. 3



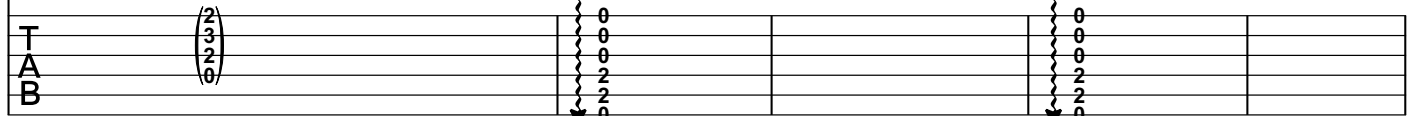
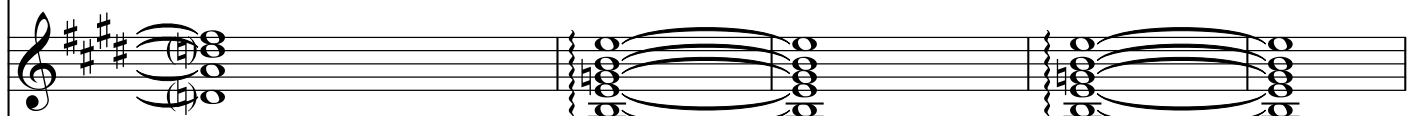
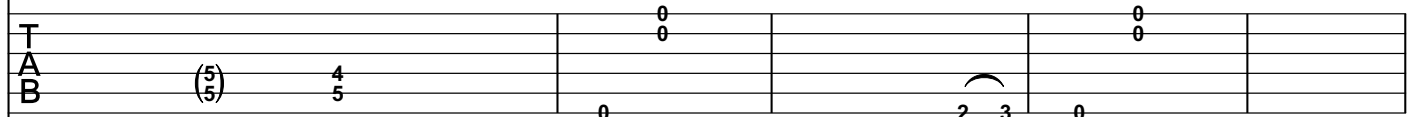
Gtr. 5



ne - ver dies.



let ring-----



D5 A/D Gsus2 D5 A/D E5

mem-ber you're not a lone.

P.M.-----| P.M.-----| P.M.-----| P.M.-----|

T												
A	7		6		7		7		6		9	
B	5	5	5	5	5	5	5	5	5	5	5	5
												3

Pre-chorus (9:52)

Gtr. 3: w/ Riff H

Light will shine on e - ven af - ter we're gone.

D.S. al Coda II

Gtr. 3: w/ Riff G

O - pen your eyes to the le - ga - cy you leave be - hind.

T	3		0	2								
A	2					6	8	10	11	13	14	16
B	0					4	6	8	9	11	12	14

Coda II



Gtrs. 1 & 2: w/ Riff A
Gtrs. 3 & 4: w/ Riff B

Outro (10:58)

Gtrs. 1 & 2 tacet
Gtrs. 3 & 4: w/ Riff D (2 times)
Gtrs. 5 & 6: w/ Riff F (6 times)

O - pen your eyes and I'll show you the
A wake, a rise.

Gtr. 7 tacet
 Gtr. 1: w/ Riff C
 Gtr. 2: w/ Riff C (first 4 meas.)
 Gtrs. 3 & 4: w/ Riff D

A Bsus4

3

3

3

TAB

5 7 7 6 8 9 8 6 8 6 7 7 5 7 7 6 8 9 8 6 8 6 7 9

Gtr. 2 Bsus4/A

8^{va}

3 3 3

1/2 1/2 1

TAB

16 17 16 14 16 17 16 14 16 17 16 14 16 14 19 19 19 19 22

Gtrs. 1, 2, 3 & 4 tacet
 Gtrs. 5 & 6: w/ Riff E

7

rit.
Gsus2

Asus4