

I Built the Sky

words and music by Tommy Montgomery

Moderately ♩ = 126

Drum cue

Riff A

Grtr. 1 (dist.)

N.C.

Musical notation for Riff A, Gtr. 1 (dist.). Includes staff with treble clef and key signature of one sharp, and a corresponding TAB line with fret numbers.

Musical notation for Riff A, Gtr. 1 (dist.), continuing with a sixteenth-note triplet and a "divisi" instruction. Includes staff and TAB.

Grtr. 2 tacet
Riff B

End Riff A Em6

Musical notation for Riff B, Gtr. 2 tacet. Includes staff with treble clef and key signature of one sharp, and a corresponding TAB line.

Grtr. 1

tr

Gsus2

Asus2

Musical notation for Gtr. 1, including a tremolo effect and chord symbols Gsus2 and Asus2. Includes staff and TAB.

Gtrs. 3 (clean) & 4 (acous.)

Fill 1

End Fill 1

Musical notation for Gtrs. 3 & 4, including a "let ring" instruction. Includes staff and TAB.

Grtr. 5 (dist. w/ delay)

Musical notation for Grtr. 5 (dist. w/ delay), including a sixteenth-note triplet. Includes staff and TAB.

Em6

F6

Gsus2

Gtrs. 1 & 2

End Riff B

tr
divisi
tr

TAB
0 7 0 0 0 7 | 0 7 0 0 | 0 7 0 0 0 7 | 3 3 3 3 5 5

Gtrs. 3 & 4

Fill 2

End Fill 2

let ring-----|

TAB
1 3 0 3 3 0 2 0

Gtr. 5

8va-----|

TAB
15 15 (15) | 15 14 12 14 | 14 14 14 17 | 14 15 17 14 16 17 15 17 18 15 17 19

A D/A A D/A A G Gmaj7 G Gmaj7 G A

Gtr. 4

Gtr. 1

P.M.-----| P.M.-----| P.M.-----| P.M.-----|

TAB
5 5 5 5 5 5 7 5 | 5 5 5 5 5 5 5 3 | 3 3 3 3 3 3 5 5 | 3 3 3 3 3 3 5 7 5

Gtr. 2

Gtr. 6 (dist.)

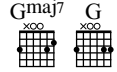
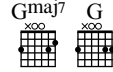
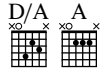
TAB
3 2 | 3 2 | 2 4 | 2 4

4 2 | 4 2 | 4 5 | 4 5

Gtr. 5 (8)-----|

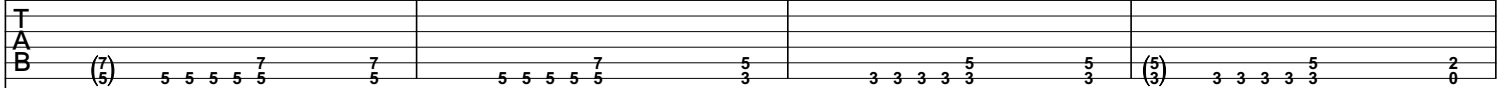
Gtrs. 5 & 7 (dist. w/ delay)

TAB
17 | 9 | 11 12 9 11 11 12



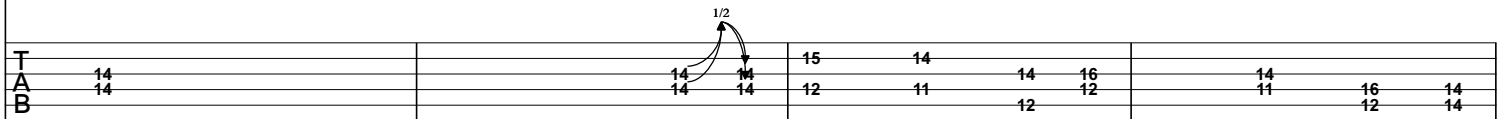
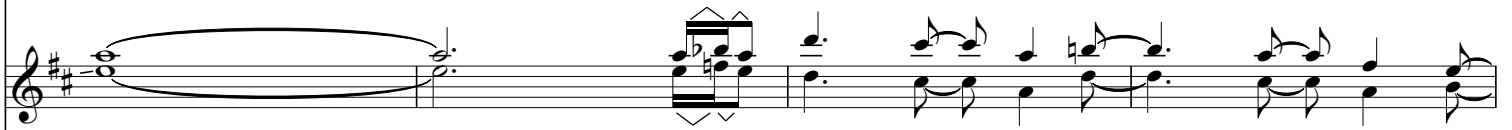
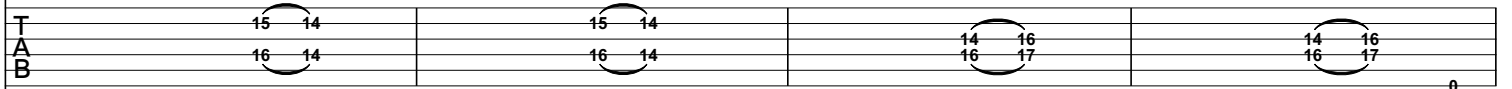
cont. in notation

Gtrs. 1 & 2



Gtrs. 3 & 4

let ring

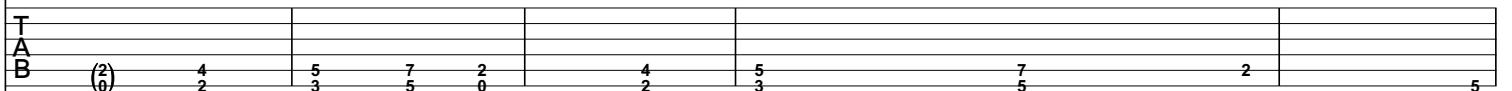


Gtr. 6 tacet

Gtr. 7 tacet

E5 F#5 G Asus4 E5 F#5 G Asus4 B B/A

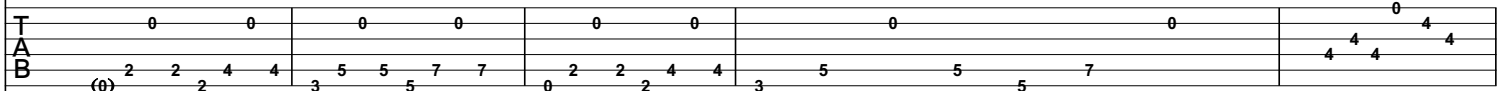
Gtrs. 1 & 2



Gtrs. 3 & 4

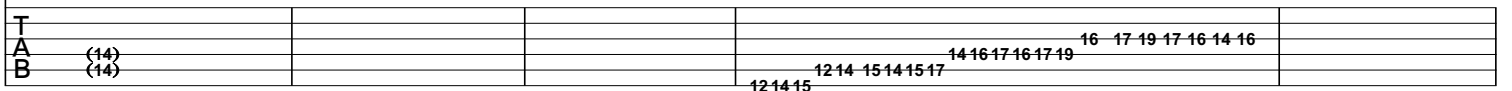


let ring---



Gtrs. 5 & 7

Gtr. 5 6



Gtrs. 1 & 2 B/G# B/A B B/A

T
A
B (5) 4 5 9 7 5

Gtrs. 3 & 4

let ring-----

T
A
B (4) 4 4 4 0 4 4 4 4 0 4 4 4 4 0 4 4 4 4

Gtr. 5 #8

Gtr. 7

T
A
B (16) 16 16

Gtr. 1 B/G# B/A Cmaj7 D5

Gtr. 2

T
A
B 7 6 7 5 5 5 7 7 5 5

Gtrs. 3 & 4

let ring-----

T
A
B (4) 4 4 4 4 0 4 4 4 4 0 4 4 4 0 0 0 0 0 0 0 0

Gtr. 5 #8

Gtr. 7

T
A
B (16) 16 16 ^{1/2}



Chorus (1:44, 3:46, 5:37)

Gtrs. 6 & 8 tacet

G

Fsus2

1., 2. I
3. You

built the sky.
built the sky.

Gtr. 1 Riff C1

let ring-----|

TAB (3 2 0) | 3 3 0 | 0 3 3

Gtrs. 3 & 4 Riff C2

let ring-----|

TAB (2 3 0) | 2 2 3 2 2 3 3 3 3 3 | 3 3 3 3 3 1 | 0 3 3

End Riff C2

Gtrs. 2 & 6 Riff C3

let ring-----|

TAB (7 5 5) | 5 5 3 | 1 3 0 3 3

End Riff C3

Gtr. 5

Gtr. 7

TAB (14) (12) | (12) 14 11 12 12 | 13 15 13 10 | 9 10 9

D

Gtrs. 2, 3, 4 & 6 tacet

Gtr. 1

End Riff C1

TAB 0 5 0 | 0 5 7 | 0 5 4 0 5 0 7 0 7 0 | 0 5 0 | 0 5 0 4 3 (3) 5 4 5 5 7 7 8

Gtr. 5

Gtr. 7

TAB 15 | 12

8 Gtr. 1: w/ Riff C1
Gtrs. 3 & 4: w/ Riff C2 G F#sus2 D
Gtr. 2: w/ Riff C3 D
Gtrs. 2, 3, 4 & 6 tacet

I ne - ver asked why. And
You al - ways knew why. And

Gtr. 5
Gtr. 7

T									
A	14	(12)	14	11	12	13	15	13	15
B	12				12			10	14

Gtrs. 5 & 7 tacet

C5 Bb5 Ab5 Eb5 Bb5 Gb5 C# C#sus4 C# A

when it falls, and sha - tters all, I will not des - pair
when I fall you must stand tall. There's no - thing to fear

Gtrs. 1 & 2

P.M.-----| P.M.-| P.M.-----| P.M.-| P.M.-|

T																			
A	5	3				8	8	4		6	7	6							
B	5	3	6			6	8	4		6	6	6	2						
	3	1	4					2		4	4	4	4	0					
						4	4	4	4	4	4	4	4						
										2	2	2	2	2	2	2			

To Coda ☐☐ To Coda ☐ Gtrs. 1 & 2: w/ Riff B Gtrs. 3 & 4: w/ Fill 1

C D Em6 Gsus2 Asus2

be-cause you'll still be right there.
be-cause

Gtr. 5

P.M.----| P.M.---|

T																			
A	(2)	7	6	7	5	5	7	7	16	14	16	14	13	14	13	13	(13)	12	14
B	(0)	7	7	7	0	2	3	3	3	3	3	3	5	5	5	5	5	12	14

Gtrs. 3 & 4: w/ Fill 2 Verse 2 (2:34)

Em6 F6 Gsus2 A Gtr. 5 tacet

Once u - pon a time I saw the

Gtr. 5
Gtr. 1

P.M.----| P.M.----|

Riff D

T																			
A	17	15	17	15	15	17	15	14	14	(14)	12	14	19	15	15	17			
B													16	17	17	16	15	17	17
													15	15	15	15	5	5	5

G5 D/F# G5 D/F# G D/F# A

clouds roll a - cross the sky. As the rain fell

TAB (7/5) 5 5 5 5 7/5 5 3 5 2 5 3 2 3 2 5 7/5 5 5 5 5 7/5 7/5 7/5

I felt a pain in my eye.

G D

End Riff D

TAB (7/5) 5 5 5 5 7/5 7/5 7/5 5 5 5 5 5 5 5 3 2 3 5 5 4 5 7

w/ Riff C (Gtr. 1)
w/ Riff A (Gtr. 2)

A G5 D/F# G5 D/F# G D/F# A

When I looked up I saw that the sky was bare.

G D

All of my pain was the absence of your stare.

Bridge (3:04)

Dm

There I was trying to

Gtr. 6 Rhy. Fig. 1

TAB 7/5 7/5

Gtr. 1 Riff E

slight P.M. next 8 measures

TAB 0 8 0 0 7 0 0 5 0 0 4 0 5 0 7 0 0 8 0 0 7 0 0 5 0 0 4 0 5 0 7 0

* Cue notes played first time only

A

find a way out.

End Rhy. Fig. 1

TAB

7	7
5	5
5	5

End Riff E

TAB

0	8	0	0	7	0	0	5	0	0	4	0	5	0	7	0	0	2	0	0	4	0	0	5	0	0	7	0	8	0	7	0
---	---	---	---	---	---	---	---	---	---	---	---	---	---	---	---	---	---	---	---	---	---	---	---	---	---	---	---	---	---	---	---

w/ Rhy. Fig. 1 (Gtr. 6)
w/ Riff E (Gtr. 1)

Dm

All the time wast - ed in fear and in doubt.

Gm

Build - ing my pri - son one brick at a time.

End Rhy. Fig. 2

Gtr. 6 Rhy. Fig. 2

P.M.----| P.M.----| P.M.----| P.M.---|

TAB

5	5	5	5	5	7	5	5	5	5
3	3	3	3	3	3	3	3	3	3
3	3	3	3	3	3	3	3	3	3

Riff F

Gtrs. 1 & 2

End Riff F

TAB

0	8	0	0	7	0	0	5	0	0	4	0	5	0	7	0	0	8	0	0	4	0	0	5	0	0	7	0	0	2	0	0	4	0	0	5	0	0	7	0	8	0	7	0
---	---	---	---	---	---	---	---	---	---	---	---	---	---	---	---	---	---	---	---	---	---	---	---	---	---	---	---	---	---	---	---	---	---	---	---	---	---	---	---	---	---	---	---

Gtr. 6: w/ Rhy. Fig. 2
Gtr. 1: w/ Riff F

Gm

You made me break through and reach for the sky.

Gtr. 2

TAB

0	12	0	0	10	0	0	8	0	0	7	0	8	0	10	0	0	12	0	0	10	0	0	8	0	0	7	0	8	0	10	0	0	5	0	0	7	0	0	8	0	0	10	0	13	0	12	0
---	----	---	---	----	---	---	---	---	---	---	---	---	---	----	---	---	----	---	---	----	---	---	---	---	---	---	---	---	---	----	---	---	---	---	---	---	---	---	---	---	---	----	---	----	---	----	---

Gtrs. 2 & 6 tacet

D5 C5 F5 C/E G5 Asus2

And

The score for Gtr. 1 and Gtr. 4 consists of a treble clef staff with a key signature of two sharps (F# and C#). Gtr. 1 plays a melodic line with some sustained notes. Gtr. 4 plays a rhythmic accompaniment with chords. Below each staff is a guitar tablature system with strings T, A, and B labeled. The tablature for Gtr. 1 shows fret numbers 7, 5, 5, 5, 2, 5, 7. The tablature for Gtr. 4 shows various fret numbers including 3, 2, 0, 3, 2, 0, 2, 0, 3, 3, 3, 3, 2, 0, 2, 0.

Gtrs. 3 & 4 tacet

D.S. al Coda

all this time I ne - ver knew that

The score for Gtr. 1 and Gtr. 2 includes lyrics: "all this time I ne - ver knew that". Gtr. 1 has a treble clef staff with a key signature of two sharps and a C5 chord marking. It features a melodic line with slurs and a P.M. (pedal point) marking. Gtr. 2 has a treble clef staff with a key signature of two sharps and a P.M. marking. Below the staves is a guitar tablature system with strings T, A, and B labeled. The tablature for Gtr. 1 shows fret numbers 6, 6, 6, 6, 6, 6, 6, 6, 8, 6, 6, 6, 6, 6, 6, 6, 6, 8, 10, 7, 8, 10, 7, 8, 10, 7, 9, 10, 8, 10, 11, 8. The tablature for Gtr. 2 shows fret numbers 3, 3, 1, 1, 1, 1, 1, 3, 3, 5, 5, 5, 5, 5, 3.



Guitar Solo (4:21)

Gr. 2 tacet

C#m A B E F#m7 E/G#

there.

Gr. 5

Gr. 7

Gr. 1

P.M.-----| let ring---

Detailed description of the first system: This system contains the first three guitar parts. Gr. 5 and Gr. 7 are in treble clef with a key signature of three sharps (F#, C#, G#). Gr. 5 has a melodic line with slurs and accents. Gr. 7 has a more complex melodic line with many slurs and accents. Gr. 1 is in bass clef and plays a rhythmic accompaniment with chords and single notes. The TAB notation for each staff shows fret numbers and string numbers (T, A, B).

A E F#7 Bm G

8va-----|

let ring-----| P.M.-| P.M.-| P.M.-| let ring-----|

Detailed description of the second system: This system continues the guitar solo. It features a key change to A major (indicated by the chord symbols A, E, F#7, Bm, G). Gr. 5 and Gr. 7 continue their melodic lines, with Gr. 5 using an 8va (octave up) effect. Gr. 1 provides a rhythmic accompaniment with chords and single notes. The TAB notation shows fret numbers and string numbers.

Musical staff with treble clef, key signature of three sharps (F#, C#, G#), and a common time signature. It features a triplet of eighth notes, a measure with a fermata over a dotted quarter note, and a measure with a triplet of eighth notes. Chord markings 'A' and 'D#11' are present above the staff. A dashed line with a circled '8' and a '1' indicates a measure repeat.

Tablature for the first system, showing fret numbers for strings T, A, and B. The sequence of frets is: 19 17 19 17, 19 18, 14 13 13, (13), 11 13 14, 12, 14. A '1/2' slur is shown over the 13 and 13 frets.

Musical staff with treble clef, key signature of three sharps, and a common time signature. It features a triplet of eighth notes, a measure with a fermata over a dotted quarter note, and a measure with a triplet of eighth notes. Chord markings 'T' and 'T' are present above the staff.

Tablature for the second system, showing fret numbers for strings T, A, and B. The sequence of frets is: (16) 24 16 23, 17 16, 15 14 15 14, 16 14, 14 13 13, (13), 12 14 16, 13, 14. A '1/2' slur is shown over the 13 and 13 frets.

Musical staff with treble and bass clefs, key signature of three sharps, and a common time signature. It features a triplet of eighth notes, a measure with a fermata over a dotted quarter note, and a measure with a triplet of eighth notes. Chord markings 'P.M.' and 'P.M.-1' are present below the staff.

Tablature for the third system, showing fret numbers for strings T, A, and B. The sequence of frets is: (3) 3 3 3 3 3 3 3 3, 2 2 0, 7 5, 5 5 5 5 5 5 5 5.

Musical staff with treble clef, key signature of three sharps, and a common time signature. It features a triplet of eighth notes, a measure with a fermata over a dotted quarter note, and a measure with a triplet of eighth notes. Chord markings 'E', 'C#/E#', 'Bm/F#', and 'E/G#' are present above the staff. A dashed line with a circled '8' and a '1' indicates a measure repeat.

Tablature for the fourth system, showing fret numbers for strings T, A, and B. The sequence of frets is: 15 13 14 16 14 15, 18 14 16 18 15 18, 19 16 18 19 17 19, 21, (21). A '1/2' slur is shown over the 21 and (21) frets.

Musical staff with treble clef, key signature of three sharps, and a common time signature. It features a triplet of eighth notes, a measure with a fermata over a dotted quarter note, and a measure with a triplet of eighth notes.

Tablature for the fifth system, showing fret numbers for strings T, A, and B. The sequence of frets is: 16 14 16 18 14 16, 18 11 13 14 12 14, 15 13 14 16 14 15, 17.

Musical staff with treble and bass clefs, key signature of three sharps, and a common time signature. It features a triplet of eighth notes, a measure with a fermata over a dotted quarter note, and a measure with a triplet of eighth notes. Chord markings 'P.M.-1', 'P.M.-1', 'P.M.-1', 'P.M.-1', 'P.M.-1', 'P.M.-1', 'P.M.-1', 'P.M.-1', 'P.M.-1', and 'P.M.' are present below the staff.

Tablature for the sixth system, showing fret numbers for strings T, A, and B. The sequence of frets is: 9 7 7 7 7 7 7 7, 11 8 8 8 8 8 8 8, 12 9 9 9 9 9 9 9, 7 7 7 7 7 7 7 7.

A

Gtrs. 5 & 7 tacet

Bm

A

Gtr. 5 (8)

Gtr. 7

Gtr. 1

TAB

Gtr. 2

TAB

Gtr. 6

TAB

Gtr. 1

TAB

Gtr. 2

TAB

Gtr. 6

TAB

Gtr. 6 tacet

Gtr. 1 G/A A A5 G/A Dm/A E7/A A5 G/A

P.M.-| P.M.-| P.M.-|

Gtrs. 2 & 6

Gtr. 2

Gtrs. 1 & 4

Gtr. 1 A Cadd9 G/B Cadd9 D5

D.S.S. al

Gtr. 4 tacet

Gtr. 2

Outro (6:11)

♩ C D Em6 w/ Riff B (Gtrs. 1 & 2)

I'll still be right here.

Gtrs. 1 & 2

P.M.-----| P.M.------|

Gtr. 5

8va-

Gtrs. 3 & 4: w/ Fill 1

Gtrs. 3 & 4: w/ Fill 2

Gtr. 5

Gsus2 Asus2 Em6 F6 Gsus2

T		17	15 17	15	15 14 12	14		15 17 18	15 17 19
A						14		14 15 17	14 16 17
B						14 17			

Gtr. 5 (8) A5

Gtrs. 1 & 2 G/A Gtr. 5 tacet A A5 G/A Dm/A

P.M.-----| P.M.-+ P.M.-+ P.M.-+ P.M.-+ P.M.-+ P.M.-+ P.M.-----| P.M.-+

T	17								
A	2	5	4	7	6	4	6	5	10
B	0	0	0	0	0	0	0	0	0

Gtrs. 1 & 2 E7/A A5 G/A A

P.M.-+ P.M.-+ P.M.-+ P.M.-+ P.M.-----| P.M.-+ P.M.-+ P.M.-+ P.M.-+ P.M.-+

T									
A	9	7	9		5	4	7	6	
B	0	0	0	0	0	0	0	0	0

Gtr. 4 Cadd9 G/B Cadd9 Asus2

T	3	3	3	0	0	0	3	3	3	3	2	0	2	0
A	0	0	0	2	2	2	2	2	2	2	2	2	2	0
B	3	2	3	0	0	0	0	0	0	0	0	0	0	0

Gtrs. 1 & 2

T	3	3	3						
A	0	0	0	2					
B	3	2	3	0					

Gtr. 3

T				0					0
A				2					2
B				2					2

Gtr. 2 tacet
N.C.

Gtrs. 3 & 4 tacet

Gtr. 2 A5

P.M.-1

Gtr. 1

T T T T P.M.-----1 P.M.-1

Gtr. 5

8va-----1

Gtr. 7

17 (17)
17 (17)