

Gtrs. 1 & 2 Fm F7 Fm

Gtr. 5
clean w/ chorus

Gtr. 6
clean w/ chorus

Gtr. 1 C7/F Fm

Gtr. 2

Gtr. 5

Gtr. 6

Gtrs. 3 & 4

Musical staff with treble clef, key signature of three flats, and a 3/4 time signature. The staff contains a melodic line with triplets and slurs. Chord markings *Gb(#11)* and *C/E* are present above the staff. A '3' is written below the final triplet.

Tablature for the first system, labeled T, A, B. It shows fret numbers for strings 1, 2, and 3. Fingerings include (10), 10-10-10-8-10, 10, 11, 10, (10), 8, 10, 8-10-11-10-8, 10-8-8-9, 10, 10-10-10, 9, 12, 13. Slurs and '1/2' markings are present.

Musical staff with treble clef, key signature of three flats, and a 3/4 time signature. The staff contains a melodic line with triplets and slurs. A '3' is written below the final triplet.

Tablature for the second system, labeled T, A, B. It shows fret numbers for strings 1, 2, and 3. Fingerings include (17), 17-17-17-15-17, 17, 18, 17, (17), 15, 16, 15-17-18-17-15, 16-15-15-16, 17, 17-17-17, 15, 17, 17.

Musical staff with treble clef, key signature of three flats, and a 3/4 time signature. The staff contains a melodic line with triplets and slurs.

Tablature for the third system, labeled T, A, B. It shows fret numbers for strings 1, 2, and 3. Fingerings include (13), 13, 13, 13, 13, 14, 13, 13, 14, 13, 13, 15, 13.

Musical staff with treble clef, key signature of three flats, and a 3/4 time signature. The staff contains a melodic line with triplets and slurs.

Tablature for the fourth system, labeled T, A, B. It shows fret numbers for strings 1, 2, and 3. Fingerings include (1), 1, 1, 1, 1, 2, 1, 1, 2, 1, 1, 3, 1.

Musical staff with treble clef, key signature of three flats, and a 3/4 time signature. The staff contains a melodic line with triplets and slurs. Chord markings *P.M.* are present below the staff.

Tablature for the fifth system, labeled T, A, B. It shows fret numbers for strings 1, 2, and 3. Fingerings include (3), 1, 1, 1, 1, 1, 1, 1, 1, 1, 1, 4, 3, 2, 2, 2, 2, 2, 2, 4, 4, 3, 2, 5, 3, 0, 0, 0, 0, 0, 0, 5, 3, 3, 0.

C#m/E

Gtr. 1
Fm

Gtr. 2


Gtrs. 5 & 6

Gtrs. 3 & 4
Riff B
End Riff B

Verse

Gtrs. 1 & 2 tacet
Gtrs. 3 & 4: w/ Riff B (4 times)

Fsus2



A help - ing hand__ leaves no trace__ of how it pulls__ you in - to its em- brace.

Rhy. Fig. 1
Gtrs. 5 & 6



T 1 1
A 1 1
B 3 3

Fsus4 F



A tired__ mind__ dis - be - lieves__ all the tings__ your eyes__ can see__


End Rhy. Fig. 1



T 1 1
A 1 1
B 3 3

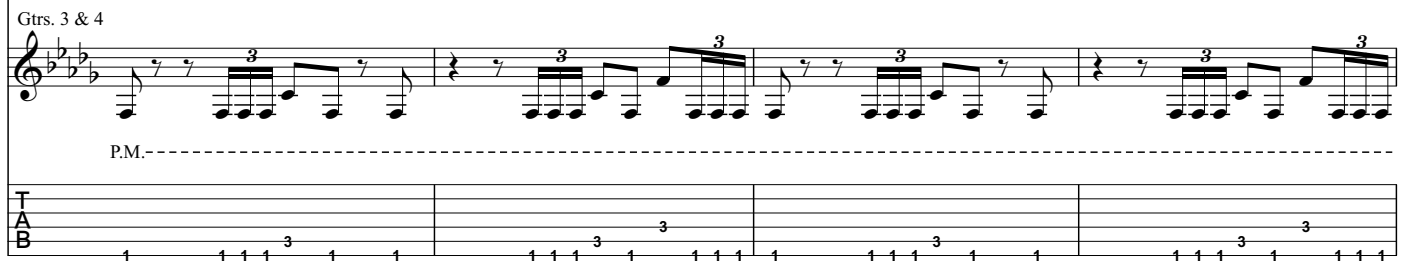
Gtrs. 5 & 6: w/ Rhy. Fig. 1

Fm Fsus2



A scorn-ful word__ turns a - way__ the lov-ing touch__ that lets__ you stay__

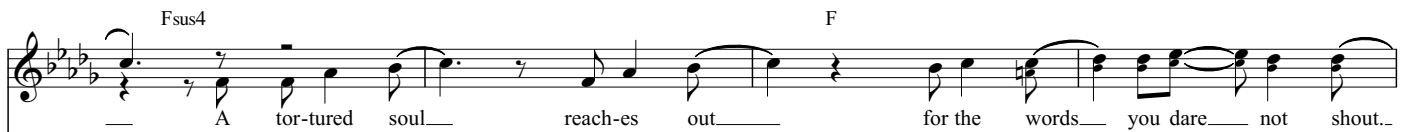
Gtrs. 3 & 4



P.M.-----


T
A
B 1 1 1 1 3 1 1 1 1 1 3 1 1 1 1 1 3 1 1 1 1 1 3 1 1 1 1

Fsus4 F



A tor-tured soul__ reach-es out__ for the words__ you dare__ not shout__

P.M.-----



T
A
B 1 1 1 1 3 1 1 1 1 1 3 1 1 1 1 1 3 1 1 1 1 1 3 1 1 1 1

Pre-chorus

Chords: Gb(#11), Ab, Bbm

Dream - ing a dy - ing dream.

Gtr. 1 Riff C

Gtr. 2 Riff C1

Gtrs. 5 & 6 Riff D

Gtrs. 3 & 4 Riff E

Chords: Gb(#11), Ab, Bb7b9

Scream - ing a si - - lent scream.

Gtr. 1 Riff C

Gtr. 2 Riff C1

Gtrs. 5 & 6 Riff D

Gtrs. 3 & 4 Riff E

P.M.-----| P.M.-----| P.M.-----| P.M.-----|



End Riff C

T
A
B

13 15 15 15 12 13 15 13 14 13 15 | 13 12 13 15 15 13 12 13 14 16 13 14 16 13 14

End Riff C1

T
A
B

6 8 8 7 9 8 6 7 6 7 6 7 8 | 6 5 6 8 8 8 6 5 6 7 4 6 2 4 1 2

P.M.-----|

End Riff D

T
A
B

(6 7 8)

End Riff E

T
A
B

6 6 6 6 6 4 6 7 | 6 5 6 8 8 8 6 5 6 7 4 6 2 4 1 2

P.M.-----| P.M.-----|

Gtrs. 5 & 6 tacet (1st time)
C/E

Chorus
Fm

Bbm

Let the an - ger rise.

Gtr. 1

Gtr. 2

T
A
B

12/0 | 10 15 | 15 8 | 15 8 | 15 17 18 | 8 10 11

Gtrs. 3 & 4

P.M.-----|

T
A
B

0 0 0 0 0 3 | 0 1 | 1 | 3 3 3 | 4

Fm

Ebm

Hear the dis - tant cries.

T								
A	(18)	18	17	15	17			
B	(11)	11	10	8	10	18	15	15
						11	8	8
								13
								6
								8
								9
								16
								9
								8
								6

P.M.-----|

T					1			
A	3				1			4
B	4				1			3
		3						1
		1	1	1	1	3	3	3
		1			1			1

To Coda ◊

F

Gb

Ab

N.C.

Bb5

Ab5 Bb5

And when you're fin - 'ly blind, take my eyes.
Ah.

T								
A	15			13	15	13	14	13
B		16					13	15

T								
A	7			5	6	8	6	5
B		8					6	6
								8

T													
A	3			6				8	8	6	8	X	X
B	1			4				6	6	4	6	X	X
								4	3	4			

Ab5 Bb5 N.C. Bb5 Ab5 Bb5 Bbm

This system contains three staves. The top staff is a guitar staff with a melodic line starting with a long note, followed by a sequence of eighth notes. The second and third staves are bass staves. The second bass staff has a long note and then a sequence of eighth notes. The third bass staff has a rhythmic accompaniment of chords and eighth notes. Chord diagrams are provided for the bass staves, showing fingerings for various chords and fret positions. Fret numbers like 6, 18, 20, 21 are indicated for the guitar and bass lines.

Bb5 Ab5 Bb5 Ab5 Bb5 N.C. Bb5 Ab5 Bb5

This system contains three staves. The top staff is a guitar staff with a long note and then a sequence of eighth notes. The second and third staves are bass staves. The second bass staff has a long note and then a sequence of eighth notes. The third bass staff has a rhythmic accompaniment of chords and eighth notes. Chord diagrams are provided for the bass staves, showing fingerings for various chords and fret positions. Fret numbers like 21, 18, 6, 4, 7, 6, 4 are indicated.

N.C. F5 Gb5

Gtrs. 1 & 2

Gtrs. 3 & 4

This system contains three staves. The top staff is a guitar staff with a melodic line. The second and third staves are bass staves. The second bass staff has a long note and then a sequence of eighth notes. The third bass staff has a rhythmic accompaniment of chords and eighth notes. Chord diagrams are provided for the bass staves, showing fingerings for various chords and fret positions. Fret numbers like 18, 15, 17, 13, 16, 4, 1, 3, 2 are indicated.

Gtrs. 3 & 4 tacet

Gbmaj7(#11)

Csus4

Gtr. 1

T
A
B

Gtr. 2

T
A
B

Gtrs. 3 & 4
P.M.- -|

Verse

F5

Bb5

Eb5

Gbmaj7(#11)

Fad-ing a-way___and feel-ing in - side out___ Reach - ing t'ward the dark-ness for a way to lift the doubt.---

Gtr. 1

T
A
B (17)

Gtr. 2

T
A
B (6)

Gtrs. 3 & 4

P.M. P.M.-| P.M.-----|

T
A
B

Gtrs. 1 & 2 tacet

F5

Bb5

Eb5

C#m

Allthese things that I nail to your door___ could start your re-vo-lu - tion, will you sink or swim to shore?___

Gtrs. 3 & 4

P.M. P.M.-| *divisi*

T
A
B

Fm Gb C/E Fm Gb C/E Fm Gb C/E

Ne - - ver end - - ing, e - - ver - -

Gtr. 1

Gtr. 2

T	13	11	14	13	13	11
A	10	11	10	11	10	11
B						

Gtr. 3

Gtr. 4

P.M.-----

T																																				
A	3 3 3 3 3 3 3 3 4 4 4 4 2 2 2 2												3 3 3 3 3 3 3 3 4 4 4 4 2 2 2 2												3 3 3 3 3 3 3 4 4 4 4 2 2 2 2											
B	1 1 1 1 1 1 1 1 2 2 2 2 0 0 0 0												1 1 1 1 1 1 1 1 2 2 2 2 0 0 0 0												1 1 1 1 1 1 1 1 2 2 2 2 0 0 0 0											

Fm Gb C/E Fm Gb Ab Bbm

last - - ing death._____

Gtr. 1

Gtr. 2

T	14	13	
A	10	11	10
B			

Gtrs. 5 & 6

divisi

T																																				
A																									8 10 11 8											
B	1 2 4 1 4 3 1 4 2 4 6 3 6 4 3 6												4 6 8 4 8 6 4 8 6 8 9 8																							

Gtr. 3

Gtr. 4

P.M.-----

T																																				
A	3 3 3 3 3 3 3 4 4 4 4 2 2 2 2												3 4 6 6 3 1												3 3 4 3 1											
B	1 1 1 1 1 1 1 1 2 2 2 2 0 0 0 0												1 4 4 4 1												1 2 4 3 1 4 2 4 6 3 6 4 3 6											

Pre-chorus

Gtrs. 1 & 2: w/ Riffs C1 & C2
Gtrs. 3 & 4: w/ Riff E

C^{ø7} D^bmaj7 E^bm F7 G^bmaj7([#]11)

Gtr. 5

T 8 10 11 9 13 11 9 11 10 11 13 11 14 13 11 13 11 13 15 13 14 16 13 14 17 18 17 14 13 16 14 13 15

Gtr. 6

T 10 11 13 10 13 11 10 13 11 13 15 11 15 13 11 15 13 15 16 13 14 16 13 14 13 16 14 13 15 13 15

Gtrs. 3 & 4

T 5 6 7 10

A 4 5 8 10

B 3 4 6 10

Gtrs. 5 & 6 tacet

Ab B^bm G^bmaj7([#]11) Ab B^b7^b9

fore your eyes, these emp - ty care - ful lies._____

D.S. al Coda

Coda ⊕

B^b5 A^b5 B^b5 D^b5 C/E

eyes.

Gtr. 1

Gtr. 2

T 15

A 8

B 8 9 10 12 9 10 12 14

Gtrs. 3 & 4

P.M.-----4

T 8 8 6 8 6 5

A 8 8 6 8 6 5

B 6 6 4 6 4 3

Bridge

Dbmaj7

Ab/C

Ebm

Bb/D

You won-der why it took so long.
 You won-der why you don't be - long.

Gtr. 1

Gtr. 2

T				
A	13	13	15	15
B	15			

Gtrs. 5 & 6

T								
A			4			6	8	6
B	4	6	5	6	5	6	4	4

Gtrs. 3 & 4

P.M.--1 P.M. P.M.--1 P.M.--1 P.M.--1 P.M. P.M.--1 P.M.--1

T								
A	6	4	4	6	4	3	3	3
B	4						8	6

Gb

Db/F

Ab

Eb/G

When ev - 'ry time you could - n't stand to be a - lone,

T				
A	(15)	13	13	15
B	16	15		

T							
A			2	1			3
B	2	4	4	3	2	3	4

P.M.--1 P.M. P.M.--1 P.M.--1 P.M.--1 P.M. P.M.--1 P.M.--1

T								
A	11	9	9	11	9	11	8	8
B	9							

Bbm F/A Csus4 C

you felt the cold - ness of its touch pull - ing you down.

T A B (15) 17 18 20
15 17 17

T A B 1 3 3 1 2 1 3 0 3 2 1 1 3 3 0 1 1 1 0 3 3 2 0 1 0

P.M.--1 P.M. P.M.--1 P.M.--1 P.M.--1 P.M.

T A B 15 13 13 13 13 15 12 12 12 12 12 17 15 15 15 17 15 17 17 17 17 17 17 17

Dbmaj7 Ab/C Dbmaj7 Ab/C

And when the fear gets too
the black - ened hand reach - es

Gtrs. 1 & 2

Gtr. 5

Gtr. 6

Gtrs. 3 & 4

P.M.--1 P.M.--1 P.M.--1 P.M.--1 P.M.--1 P.M.--1

T A B 13 10 11 10 11 13 9 13 11 10 11 10 13 10 11 10 13 10 11 10 13 9 13 11 10 11 10 13 10 11 10

T A B 6 6 5 6 5 6 6 5 6 5 6 6 5 6 5 6 6 5 6 5 6 6 5 6 5

T A B 6 6 4 4 4 4 3 3 3 3 3 6 6 4 4 4 4 3 3 3 3 3 6 6 4 4 4 4 3 3 3 3 3

Ab Eb/G Bbm F/A

un - til the dark - ness takes your

T 17 13 17 13 15 13 16 15 16 13 15 13 17 13 17 13 | 18 15 19 15 16 15 13 17 13 17 13 15 16 15 19 15

A 13 13 13 13 13 13 13 13 13 13 13 13 13 13 13 13 | 14 14 13 14 14 14 14 14 14 14 14 14 14 14 14

B 13 13 13 13 13 13 13 13 13 13 13 13 13 13 13 | 14 14 13 14 14 14 14 14 14 14 14 14 14 14 14

T 9 9 8 9 8 9 9 8 8 8 | 6 6 5 6 5 6 6 5 6 5 6 5 6 5

A 6 6 5 6 5 6 6 5 6 5 | 8 8 7 8 7 8 8 7 8 7 8 7 8 7

B 6 5 6 6 5 6 6 5 6 5 | 8 8 7 8 7 8 8 7 8 7 8 7 8 7

P.M.--+ P.M.--+ P.M.--+ P.M.--+ P.M.--+ P.M.--+

T 13 13 11 11 11 | 14 14 13 13

A 13 13 12 12 12 | 14 15 14 14

B 13 13 13 13 10 10 10 10 | 13 13 13 13 12 12 12 12

Bbm F/A Csus4 C

eyes and makes you blind.

8^{va}

divisi

T 18 15 19 15 16 15 13 17 13 17 13 15 16 15 19 15 | 17 18 20 21 18 20 21 20 18 20 21 20 17 18 20

A 18 15 19 15 16 15 13 17 13 17 13 15 16 15 19 15 | 14 15 17 18 15 17 18 17 18 17 18 15 17 18

B 18 15 19 15 16 15 13 17 13 17 13 15 16 15 19 15 | 15 16 13 15 16 14 15 17 18 15 17 18 15 17 18

T 6 6 5 6 5 6 6 5 6 5 | 3 3 0 1 1 1 0 3 | 3 2 0 1 0

A 8 8 7 8 7 8 8 7 8 7 | 3 3 0 1 1 1 0 3 | 3 2 0 1 0

B 8 8 7 8 7 8 8 7 8 7 | 3 3 0 1 1 1 0 3 | 3 2 0 1 0

P.M.-+ P.M.-+ P.M.-+ Gtr. 7*

T 14 14 13 13 18 18 18 18 18 18 18 | 17 17 17 17 17

A 14 14 14 14 17 17 17 17 17 17 17 | 17 17 17 17 17

B 13 13 13 13 12 12 12 12 12 12 15 | 15 15 15 15 15 15 15 15 15 15 5 3

* Gtr. 7: w/ dist., delay and phaser

Gtrs. 1-6 tacet

Gtr. 7 F5 Eb5 F5 F5 Eb5 F5 F5 Eb5 F5 Eb5 F5 Gb5 Eb5

T 10 10 10 8 10 X X | 10 10 10 8 10 X X | 10 10 10 8 10 X X | 8 8 8 10 11 8

A 8 8 8 6 8 X X | 8 8 8 6 8 X X | 8 8 8 6 8 X X | 6 6 6 8 9 6

B 8 8 8 6 8 X X | 8 8 8 6 8 X X | 8 8 8 6 8 X X | 6 6 6 8 9 6

Gtrs. 3 & 4: w/ Rhy. Fig. 3

Gtr. 8

F5 Eb5 F5 Eb5 F5

T
A
B

Eb5 F5 Eb5 F5 Gb5 Eb5

T
A
B

F5 Eb5 F5 Eb5 F5 Eb5 F5 Eb5 Db5 Ab5 Bb5

T
A
B

Gb5 Ab5 Bb5 Ab5 Bb5

T
A
B

Ab5 Bb5 Gb5 Ab5

T
A
B

Bb5 Ab5 Bb5 C5 Bb5 C5 N.C.

T
A
B

Gtrs. 9 & 10*

T
A
B

* Gtrs. 9 & 10: w/ dist.

Gtr. 9

T
A
B

Gtr. 10

T
A
B

Gtr. 3

T
A
B

Gtr. 4

T
A
B

Gtrs. 4, 9 & 10

T
A
B

Gtr. 3

T
A
B

Gtrs. 9 & 10

Gtrs. 9 & 10 tacet

Gtr. 1

Gtr. 2

F5

Gb

Ab

T
A
B

Gtrs. 3 & 4

T
A
B

Gtr. 1 Bb5 Ab5 Bb5 Ab5 Bb5 Gb

Gtr. 2

T A B

Gtrs. 3 & 4

T A B

Ab Bb5 Ab5 Bb5 Db5 C5 C/E

T A B

T A B

Gtr. 1 F5 Eb5 F5 N.C. F5 Eb5 F5

Gtr. 2

T A B

Gtrs. 3 & 4

T A B

Gtrs. 9 & 10

w/ wah

T A B

Dbmaj7 Eb5 C/E F5 Eb5 F5 8va P.H.

Tablature for system 1: T (14, 16, 17), A (13, 15, 17), B (16, 18, 18)

Tablature for system 2: T (8, 6, 6, 6, 8, 4, 6, 4, 4, 4, 4, 8, 8, 3, 3, X, X, X, 4, 4, 6, 6), A (6, 6, 8, 4, 6, 4, 4, 4, 4, 6, 6, 0, 3, 3, X, X, X, 3, 3, 5, 5), B (8, 4, 6, 4, 4, 4, 4, 6, 6, 0, 3, 3, X, X, X, 3, 3, 5, 5)

N.C. F5 Eb5 F5

Tablature for system 3: T (16, 18, 18), A (15, 17, 17), B (16, 18, 18)

Tablature for system 4: T (3, 4, 3, 6, 3, 6, 3, 6, 3, 3, 3, 3, 4, 1, 3, 4, 1, 2, 0, 2, 3, 3, X, X, X, 4, 4, 6, 6), A (3, 4, 3, 6, 3, 6, 3, 6, 3, 3, 3, 3, 4, 1, 3, 4, 1, 2, 0, 2, 3, 3, X, X, X, 3, 3, 5, 5), B (3, 4, 3, 6, 3, 6, 3, 6, 3, 3, 3, 3, 4, 1, 3, 4, 1, 2, 0, 2, 3, 3, X, X, X, 3, 3, 5, 5)

Gtrs. 9 & 10 tacet

Gtr. 1 C#m F5 Gb C/E F5 Gb5 C/E

Tablature for system 5: T (17, 16, 16, 17, 16, 16, 17, 16, 16, 17, 16, 16, 17, 16, 15, 16, 14, 15, 15), A (18, 16, 18, 16, 18, 16, 18, 16, 18, 16, 18, 16, 18, 16, 15, 16, 14, 15, 15), B (18, 16, 18, 16, 18, 16, 18, 16, 18, 16, 18, 16, 18, 16, 15, 16, 14, 15, 15)

Gtrs. 3 & 4 semi-P.H. semi-P.H. P.M. P.M.-1

Tablature for system 6: T (4, 6, 4, 5, 4, 6, 4, 5, 4, 5, 4, 6, 4, 5, 4, 5, 4, 6, 3, 3, 3, 3, 3, 3, 4, 4, 4, 4, 2, 2, 2, 3, 4, 4, 5, 5, 0), A (4, 6, 4, 5, 4, 6, 4, 5, 4, 5, 4, 6, 4, 5, 4, 5, 4, 6, 3, 3, 3, 3, 3, 3, 4, 4, 4, 4, 2, 2, 2, 3, 4, 4, 5, 5, 0), B (4, 6, 4, 5, 4, 6, 4, 5, 4, 5, 4, 6, 4, 5, 4, 5, 4, 6, 3, 3, 3, 3, 3, 3, 4, 4, 4, 4, 2, 2, 2, 3, 4, 4, 5, 5, 0)

Gtr. 1 N.C.

Musical notation for Gtr. 1, N.C. section. The staff shows a melodic line with triplets and slurs. Below the staff are two lines for guitar strings (T and B) with fret numbers: 15, 15 16 18, 15, 17, 18 17 15 17, 15, 14, 14 14 15 17, 13, 14.

Gtr. 2

Musical notation for Gtr. 2. The staff shows a melodic line with triplets and slurs. Below the staff are two lines for guitar strings (T and B) with fret numbers: 8, 8 9 11, 8, 10, 11 10 8 10, 8, 7, 7 7 8 10, 6, 7.

Gtr. 3

Musical notation for Gtr. 3 and Gtr. 4. Gtr. 3 has a melodic line with triplets and slurs. Gtr. 4 has a bass line with triplets and slurs, labeled P.M. Below the staff are two lines for guitar strings (T and B) with fret numbers: 3, 3 3 3 3 3, 3, 3, 3 3 3 3 3, 3, 3, 3 3 3 3 3, 3, 3.

F5 Eb5 F5

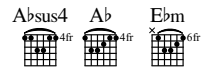
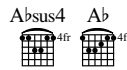
Musical notation for F5 Eb5 F5 section. The staff shows a melodic line with triplets and slurs. Below the staff are two lines for guitar strings (T and B) with fret numbers: (14), 14 15 17, 18, 15, 15 16 18, 15, 17, 17 18 20 18, 17, 14.

Musical notation for F5 Eb5 F5 section. The staff shows a melodic line with triplets and slurs. Below the staff are two lines for guitar strings (T and B) with fret numbers: (7), 7 8 10, 10, 8, 8 9 11, 8, 10, 10 11 13 11, 10, 7.

Musical notation for F5 Eb5 F5 section. Gtr. 3 has a melodic line with triplets and slurs. Gtr. 4 has a bass line with triplets and slurs, labeled P.M. Below the staff are two lines for guitar strings (T and B) with fret numbers: (3), 3 3 3 3 3, 3, 3, 3 3 3 3 3, 3, 3, 3 3 3 3 3, 3, 3.

Verse

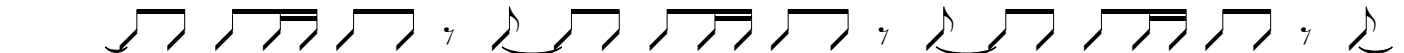
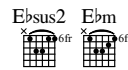
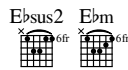
Gtrs. 1-4 tacet



Gtrs. 5, 6 & 11*



* Gtr. 11: acoustic (doubled) A scat-tered mind in dis-ar - ray can - not find the light in each new day.

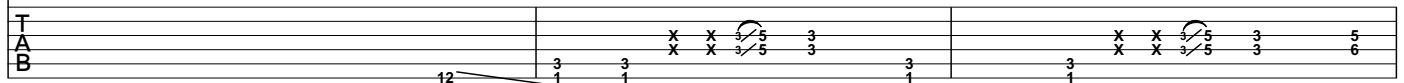


A bro - ken heart can fin - 'ly rest hav - ing failed each

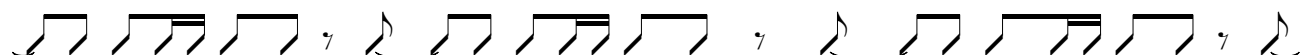
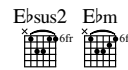
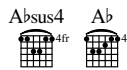
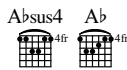


and ev - 'ry test. A mourn-ful tear cas - cad - ing down

Gtrs. 3 & 4



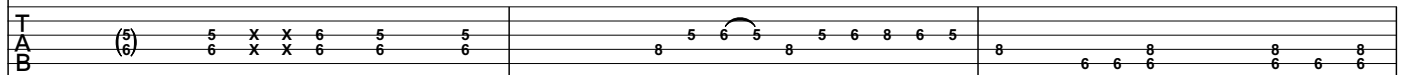
Gtrs. 5 & 6 cont. in notation



the i - ron check that wears a frown. A hum - bled man



P.M. - -



Ebus2 Ebm Csus4 C

leaves no trace of how he longed for your embrace.

leaves no trace of how he longed for your embrace.

Gtrs. 5 & 6

T A B (7) 7 7 7 7 6 7 3 0 1 1 0 2 0 1 0

Gtrs. 3 & 4

P.M.-----| P.M.-| P.M.-| P.M.-----| P.M.

T A B (8) 8 8 6 6 6 8 9 8 8 7 6 10 9 10 9 9 10 10 10 10 X X 3 4 3 1 3 1 4 1

Pre-chorus

Gtrs. 1 & 2 w/ Riffs C & C1
 Gtrs. 5 & 6 w/ Riff D
 Gtr. 11 tacet

Gb Ab Bbm

Dream - - ing your fin - - al dream.

Gtrs. 3 & 4

P.M.-----| P.M.-----|

T A B 2 1 3 1 4 1 2 3 1 2 4 1 3 1 3 4 3 4 3 4 6 4 6 6 5 6 6 5 8 6 5 8

Gb Ab Bb7b9

Cast out the si - - lent scream.____

Gtrs. 3 & 4

P.M.-----| P.M.-----| P.M.-----|

T A B 2 4 6 3 4 6 3 6 4 3 6 3 6 4 3 4 3 6 4 6 8 4 6 8 4 6 8 4 8 6 4 4 4 8 6 4 4 8 6 4 6 4 8 6 6 6 6 4 6 7

Gtr. 1

Gtr. 2

Gtrs. 3 & 4

Chorus

F5 Bbm

Let the an - ger rise.

Gtr. 1

Gtr. 2

Gtrs. 3 & 4

F5 Ebm

Hear the dis - tant cries.

Gtr. 1

Gtr. 2

Gtr. 3 & 4

F Gb Ab Fb

And when you're fin - 'lly blind, fin - 'lly blind.
Ah...

Gtr. 1

T								
A	15	7	8	11	10	11	13	14
B								11

Gtr. 2

T						
A	8		6	8	9	
B		9				6

Gtrs. 3 & 4

T						
A	3	4	6		0	
B	1	2	4		2	0

Ebm Gb6(#11) F/A

Take my

P.M.-----|

T	11	13	14		16	16	18	18				
A				9	11	13	10	11	13	11	13	14
B												

T								
A	8		10		11	11	10	10
B								

P.M.----| P.M.----|

T	4					
A	3			3	3	6
B	1			3	1	0

* Doubled by whisper

