

Awake

word and music by
Tommy Montgomery

$\text{♩} = 96$

B synth brass A

synth pad

$\text{♩} = 136$

G A B B G D A

Riff A1
Gtr. 1 (dist. w/ chorus)

Riff A2
Gtr. 2 (dist. w/ chorus)

Riff B1
Gtr. 3 (dist.)

Riff B2
Gtr. 4 (dist.)

Tablature for Riff A1:

				16	(16)	(16) 14	12
--	--	--	--	----	------	---------	----

Tablature for Riff A2:

				16	19	17 16 (16) 14
--	--	--	--	----	----	---------------

Tablature for Riff B1:

				4	4	4	4	4	4	3	3	3
				4	4	4	4	4	4	0	0	0
				2	0	0	0	2	0	0	0	3

Tablature for Riff B2:

				4	4	4	4	4	4	5	(5)	7	5
				4	4	4	4	4	4	5	(5)	5	5
				2	0	0	0	2	0	0	0	5	3

E B G D A **End Riff A1**

TAB: 11 12 11 14 (14) (14) 16 14 13 14 13 14 16 14 (14) 12 14

End Riff A2

TAB: 13 14 13 16 12 16 14 12 15 (15) 14 12

End Riff B1

TAB: (2/2/0) 5/4/2 (5/4/2) 4/4/2 4/4/2 4/4/2 4/4/2 4/4/2 4/4/2 4/4/2 4/4/2 4/4/2 4/4/2 4/4/2 3/0/0 (3/0/0) 3/2/0 2/2/0 (2/2/0) 2/3/5

End Riff B2

TAB: (5/5/3) 2/2/0 (2/2/0) 4/4/2 4/4/2 4/4/2 4/4/2 4/4/2 4/4/2 4/4/2 4/4/2 4/4/2 4/4/2 4/4/2 5/5/3 (5/5/3) 7/5/5 7/7/5 (7/7/5)

B(sus4) **Riff C** Gtrs. 1 & 2 B(sus4)/A

TAB: 16 18 16 14 16 18 16 14 16 (16) 18 16 14 16 14 16 16 1/2 16 1/2 (17) 16 16 (16) 18 16 14 16

Riff D Gtrs. 3 & 4 P.M.

TAB: 2 2 4 2 2 4 2 2 4 2 2 4 2 0 2 4 0 2 4 0 2 4 0 2 4 0 2 4 4

B(sus4) **End Riff C** B(sus4)/A

TAB: 16 18 16 14 16 18 16 14 16 (16) 18 16 14 16 14 16 16 1/2 16 1/2 (17) 16 17 (19)

End Riff D P.M.

TAB: 2 2 4 2 2 4 2 2 4 2 2 4 2 0 2 4 0 2 4 0 2 4 0 2 4 0 2 4 1 2 1

B(sus4) B(sus4)/A B(sus4)

8va
Gtr. 2

w/ Riff C (Gtr. 1)
w/ Riff D (Gtrs. 3 & 4)

B(sus4)/A Em D/F# B Am/C

(8)

8va
Gtr. 1

Gtr. 3

B7(b9) Cmaj7 B(add11) B(add11)/A

Riff E
Gtrs. 5 (clean w/ chorus) & 6 (acous.)

(8)

Verse 1 (1:41)

B(add11) D6(add9) G(sus2) A(sus4) B(sus4)

A- wake, _____

End Riff E Riff F

T A B

A6(add9) B(sus4) A6(add9)

a- rise, _____ and let the sun o - pen your eyes. _____

End Riff F

w/ Riff F (Gtrs. 5 & 6) (3 times)

T A B

B(sus4) A6(add9) B(sus4) A6(add9)

A- lign _____ your mind. _____ You were ne - ver that blind. _____

B(add11) Gtr. 1 B(add11)/A B(add11) D6(add9)

w/ Riff E (Gtrs. 5 & 6)

T A B

Verse 2 (2:25)

G(sus2) A(sus4) B(sus4) A6(add9) B(sus4)

To live, _____ to die. _____ Just clip your wings

Gtrs. 3 & 4

w/ Riff F (Gtrs 5 & 6) (4 times)

T A B

A6(add9) B(sus4) A6(add9)

_____ and you'll fly. _____ Give up, _____ give in. _____

w/ Riff D (Gtrs. 3 & 4)

T A B

B(sus4) A6(add9) E(sus2) G(sus2) A(sus2)

Don't let the mad - ness be gin.

Gr. 3

TAB: 0 2 2 4 3 5 5/7 5 7 7/9 5 7 7/9

E(sus2) G(sus2) A(sus2) B(sus2) F#m G#

TAB: 0 2 2 4 3 5 5/7 5 7 7/9 7 9 9/11 9 11 11 9 10 9 10 11 9 11 11 9 10 9 10 11 11 13 11 14 11 13 13

F#m E B

Gr. 4

TAB: 11 13 13 11 14 11 13 13 9 11 11 9 10 9 10 11 9 11 11 9 10 9 10 11 7 9 9 7 9 7 9 7 9 9 7 9 7 9 9 7 9 6 9 6 8 9 7

TAB: 7 6 9 7 6 7 9 6 5 4 7 6 7 6 7 7 5 4 7 6 7 6 7 7 9 12 11 12 10 12 12 9 12 11 12 10 12 12 4 4 4 4 4 4 4 4 4 4

A D C#7

Riff G

TAB: 7 9 6 9 6 8 9 5 7 7 4 6 4 6 7 5 7 7 4 6 4 6 7 5 7 7 5 7 5 7 7 5 7 7 5 7 5 7 7 4 6 6 6 4 6 4 4

TAB: 7 6 9 7 6 7 9 6 5 4 7 6 7 6 7 7 5 4 7 6 7 6 7 7 9 12 11 12 10 12 12 9 12 11 12 10 12 12 4 4 4 4 4 4 4 4 4 4



Chorus (3:31, 5:40, 10:08)

F#5

G

D

A

Eyes o - pen wide, — try-ing to see_ the truth.

End Riff G

Gtrs. 3 & 4

P.M.--| P.M.--| P.M.-| P.M.--| P.M.--| P.M.-|

T 7 4 5 7 3 3 3 3 3 2 2

A 6 4 6 4 4 4 4 4 4 4 4

B 4 4 4 4 4 4 4 4 4 4 4

T 6 6 6 6 6 6 6 6 6 6 6

A 4 4 4 4 4 4 4 4 4 4 4

B 4 4 4 4 4 4 4 4 4 4 4

E

F#5

F#

C#

I don't know why — I ne - ver_ see

P.M.--| P.M.--| P.M.-| P.M.--| P.M.--| P.M.-| P.M.-|

T (2) 2 (2) 4 4 4 4 4 4 4 4 6 6 4

A (2) 2 (2) 4 4 4 4 4 4 4 4 6 6 4

B 0 0 0 0 2 0 0 0 2 0 0 0 2 0 0 0 2 0 0 0 2 0 0 0 4 4 4 4 4 4 4 2

B

E5

F#5

G

D

A

you. Sun in_ my eyes, — wash-ing a- way_ the pain.

P.M.-| P.M.--| P.M.--| P.M.-| P.M.--| P.M.--| P.M.-|

T (4) 4 4 4 4 4 4 4 4 4 4 4 4 3 3 3 3 3 2 2

A (4) 4 4 4 4 4 4 4 4 4 4 4 4 3 3 3 3 3 2 2

B (2) 2 2 2 2 2 3 2 0 2 0 2 0 0 0 2 0 0 0 2 0 0 0 2 0 0 0 2 0 0 0 3 (3) 3 3 2 2 0

Gtr. 3

F#5

C#7

Dmaj7

A - wake to day, — to - mor - row_ the dark - ness_ will

Gtr. 4

P.M.--| P.M.--| P.M.-| P.M.--| P.M.--| P.M.-|

T 2 3 5 6 6 7 (7) 7 7 7 9

A (2) 4 4 4 4 4 4 4 4 4 4 4 4 6 6 6 9

B (2) 4 4 4 4 4 4 4 4 4 4 4 4 4 4 4 4 5 (5) 5 5 5 5 5 5 7

E C#/E# F#m D/F# G A F#/A# B⁵

fade back to light.

Gr. 4 tacet

T
A
B

(9) 9 9 9 11 (11) 11 (11) 12 (12) 12 (12) 14 (14) 16 (16) 4 4 4
(7) 7 7 7 7 7 8 (8) 9 (9) 9 (9) 10 (10) 12 (12) 13 (13) 2 0 0 0 2 0 0 0 2 0 0

F⁵ G⁵ F⁵ G⁵ F⁵ G⁵ F⁵ B⁵

T
A
B

4 4 4 6 (6) 4 4 4 4 4
2 0 0 0 2 0 0 0 2 0 0 4 5 4 (4) 5 4 (4) 5 3 (5) 3 3 2 0 0 0 2 0 0 0 2 0 0 2 0 0 2 0 0 2 0 0

A E Em F#7(b9) C B(add11) B(add11)/A

Gr. 1
w/ Riff E (Gtrs. 5 & 6)

T
A
B

4 2 5 0 0 2 3 2 3 1 2 4 5 2 4 5 3 4 6 7 5 7 7 7 6 7 7 9 (9) 7 6 7 5

B(add11) D6(add9) G(sus2) A(sus4) B

Verse 3 (4:38)

I've felt the won

8^{va}

T
A
B

9 8 9 9 11 14 16 14 16 16 15 14 19 14 17 14 16 14 15 14 16 14 16 7 7 7 7 5 7 7 5 7 5

A B

der as the pride left my eyes. I've seen the ro-

T
A
B

7 7 7 7 6 7 7 5 7 5 5 5 7/9 7 7 7 9 7 9 11 7 7 (7) 9 (9) 9 7 0 7 7 7 7 5 7 7 5 7 5

A B(sus4)

- ses_ as they reach_ for_ the_ skies._ Death and de- cay_ our_ mor

P.M.-----

T
A
B

7 7 7 7 6 7 7 5 7 5 5 5 7/9 7 7 7 9 7 9 11 7 7 (7) 9 (9) 9 7 0 2 2 2 2 2 2 2 2 2 2 2 4 2 2 2

B(sus4)/A

- tal_ shame 'til our soul leaves the earth._

P.M.-----

T
A
B

4 2 2 2 2 2 2 2 4 2 2 2 2 2 2 0 0 0 0 0 0 2 0 0 0 0 0 4 0 0 0 4 0 0 0 0 0 0 0 0 4 0 0 0 2 0 0 0

B(sus4) B(sus4)/A

Fu - tile plan_ from an ig - no - rant man,_ we all de- serve_ to burn.

P.M.-----

T
A
B

2 2 2 2 2 2 2 2 2 2 2 2 4 2 2 2 2 2 4 2 2 2 2 2 2 2 2 2 2 0 0 0 0 0 0 0 2 0 0 0 0 0 0 4 0 0 0

N.C.

P.M.-----

T
A
B

4 0 0 0 0 0 0 0 4 0 0 0 2 0 0 0 5 2 5 2 4 2 4 2 4 2 5 4 2 5 2 5 2 4 2 4 2 4 2 5 4 2

Gtr. 4

T
A
B

17 14 17 14 16 14 16 14 16 14 17 16 14 17 14 17 14 16 14 16 14 16 14 17 16 14 17 16 14

F#m

Ro - ses are red with the

Riff H
Gtrs. 3 & 4

TAB notation for Riff H, measures 1-4.

TAB notation for Riff H, measures 5-8.

E

D

blood of the dead. See the light for the dark-ness it will be - come.

End Riff H

TAB notation for End Riff H, measures 1-4.

C#7

TAB notation for C#7, measures 1-5.

TAB notation for C#7, measures 6-10.

D.S. al Coda I

Coda I



Interlude (6:16)

Musical notation for guitar system 1, measures 1-5. Chords: D^o7, C#7.

TAB: 7 4 5 | 6 6 6 6 6 6 6 6 | 6 6 6 6 6 6 6 6

TAB: 6 6 6 | 4 4 4 4 4 4 4 4 | 4 4 4 4 4 4 4 4

Musical notation for guitar system 2, measures 1-5. Chords: B, Gtr. 1, Gtr. 3.

TAB: 8 9 8 9

TAB: 9 9 7 7 7 7 7 7 7 7 7 7 7 7

Musical notation for guitar system 3, measures 6-9. Chords: D, B.

TAB: 8 9 8 9 | 11 12 11 13 | 11 9 12 11 | 8 9 8 9

TAB: 9 9 7 7 7 7 7 7 7 7 | 12 12 10 10 10 10 10 10 10 10 | 12 12 10 10 10 10 10 10 10 10 | 9 9 7 7 7 7 7 7 7 7

Musical notation for guitar system 4, measures 10-13. Chords: A, B, Gtr. 2.

TAB: 8 9 8 9 | 6 7 9 7 | 10 9 7 9 7 6 | 4 7 9 7 8 9 8 9

TAB: 9 9 7 7 7 7 7 7 7 7 | 7 7 5 5 5 5 5 5 5 5 | 7 7 5 5 5 5 5 5 5 5 | 9 9 7 7 7 7 7 7 7 7

Musical notation for guitar system 5, measures 14-17. Chords: D, B.

TAB: 7 9 7 8 9 8 7 | 10 12 10 11 12 11 10 | 10 9 11 9 12 10 11 12 11 | 7 9 7 8 9 8 7

TAB: 9 9 12 12 10 10 10 10 10 10 10 10 10 10 10 10 | 12 12 10 10 10 10 10 10 10 10 10 10 | 9 9 7 7 7 7 7 7 7 7

G B7 Em

2. Gtr. 1 (2nd time only)

played 1st time only

Gtr. 4

cue notes played 2nd time

This system contains two guitar parts. The top part is labeled 'Gtr. 1 (2nd time only)' and features a melodic line with a '2.' marking. The bottom part is labeled 'Gtr. 4' and includes a 'played 1st time only' section followed by a 'cue notes played 2nd time' section. Both parts include TAB notation with fret numbers.

F#7(b9) Bm

This system continues the guitar parts. The top part is labeled 'F#7(b9)' and the bottom part is labeled 'Bm'. Both parts include melodic notation and TAB with fret numbers.

B7(b9)

This system continues the guitar parts. The top part is labeled 'B7(b9)'. Both parts include melodic notation and TAB with fret numbers.

This system continues the guitar parts. Both parts include melodic notation and TAB with fret numbers.

8^{va}

TAB: 14 14 15 14 12 14 15 13 14 16 14 13 15 14 15 13 14 16 14 13 14 16 17 14 16 17 16 14 17 16 17 16 17 19 20 17 19 20 19 17 20 19

TAB: 7 7 8 7 5 7 8 6 7 9 7 6 8 7 8 6 7 9 7 6 7 9 10 7 9 10 9 7 10 9 10 8 9 11 9 8 9 11 12 10 12 13 12 10 13 12

Guitar Solo (8:05)

E⁵ D⁵ C⁵ B⁵ Em Gtr. 7 (dist. w/ delay) Em⁶

(8) P.M.-----|

TAB: (19) 7 5 3 2 12 15 14 14 17 15 17 19 16 16 19 19 19 19 17 19 17 14 14 17 16 14 14 17

TAB: (12) 7 5 3 2 7 5 3 2 2 0 0 0 3 0 0 5 0 0 4 0 2 0 0 0 3 0 0 5 0 0 4 0

B^{b5} G⁵ A⁵ Em⁶

S.H.

TAB: 16 14 16 14 16 14 18 16 14 16 14 16 14 16 15 19 17 15 17 17 17 17 15 16 15 16 15 18 15

TAB: 2 0 0 0 3 0 0 5 0 0 4 0 2 0 0 0 6 5 3 (5) 7 5 2 0 0 0 3 0 0 5 0 0 4 0

16 15 16 15 19 15 16 15 16 15 19 15 17 18 17 15 17 15 16 15 16 15 16 15 17 14 17 14 14 17

6 B^{b5} G⁵ A⁵ F[#]

15 17 14 15 12 14 15 12 14 15 14 15 17 14 16 17 16 17 19 16 17 16 15 16 15 14 17 14 15 15 14 14 18 14 14 15

B^{b5} G⁵ F^{#5}

13 17 16 15 14 18 14 15 15 16 17 13 13 14 16 14 13 14 15 12 14 15 13 14 16 17 14 16 17 15 16 18 17 19 20 19

Em⁶

17 15 16 14 7 9 7 10 7 9 7 9 7 9 7 9 7 9 7 9 7 9

B(add11)



D6(add9)



G⁵

A⁵

Gtr. 6



8^{va}

Musical staff with notes and fret numbers (6, 6, 6, 6) and an 8va marking.

Tablature for the first staff: T 16 16 16 14 14 14, A 17 17 17 15 15 15, B 14 14 14, 19

Gtr. 1

Musical staff for Gtr. 1 with notes and a 1/2 marking.

Tablature for the second staff: T 2, A 5, B 0, 0, 0, 3, 7, 7, 5, 13, 14, (14), 16, (16), 13, 14, 16, 16, 16, (16), 14

Gtr. 2

Musical staff for Gtr. 2 with notes.

Tablature for the third staff: T 9, A 11, B (11), 9, (9), 9, 11, 9, 7, 7, (7), 7

Gtr. 5

Musical staff for Gtr. 5 with notes.

Tablature for the fourth staff: T 0, A 0, B 0, 0, 0, 0, 8, 8, 8, 8, 9, 9, 9, 9, 7, 9, 9, 9, 9, 7, 7, 0, 0, 0, 0, 11, 11, 11, 11, 12, 12, 12, 12, 10, 12, 10, 10

B(add11)



A(add9)



E



Musical staff with notes and a 1/2 marking.

Tablature for the fifth staff: T (14), A 16, B (14), 16, 16, 14, 16, 14, 13, 14, (14), 16, (16), 13, 14, 13, 14, 13, 16, 14, (14), 12, 14, (14), 14, 14, 16, 18, 17

Musical staff with notes and a 3 marking.

Tablature for the sixth staff: T (7), A 7, B (7), 7, 7, 7, 9, 11, (11), 9, (9), 9, 11, 9, 12, 11, (11), 9, 12, (12), 14, 14, 16, 14

Musical staff with notes.

Tablature for the seventh staff: T 0, A 0, B 0, 0, 0, 0, 8, 8, 8, 8, 9, 9, 9, 9, 7, 9, 9, 9, 9, 7, 7, 0, 0, 0, 0, 1, 1, 1, 1, 2, 2, 2, 2, 0, 2, 0, 0, 0, 0, 1, 1, 1, 1, 2, 2, 2, 2, 0

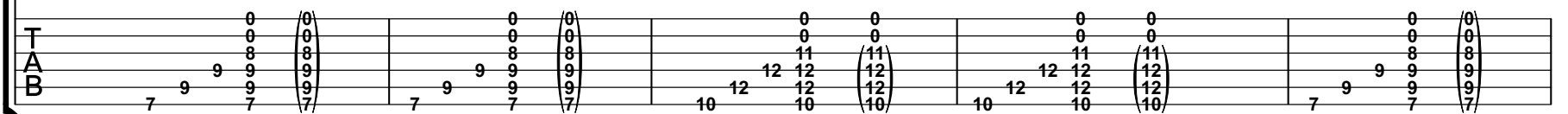
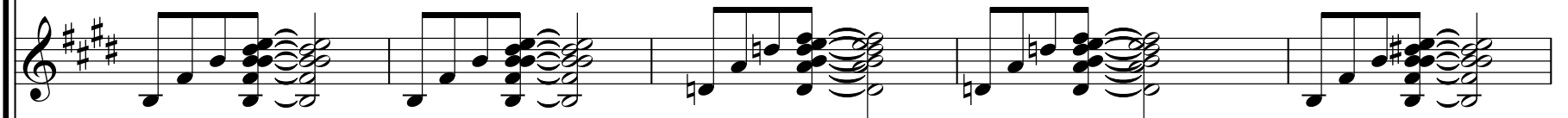
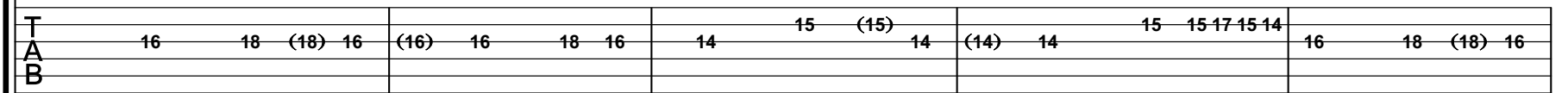
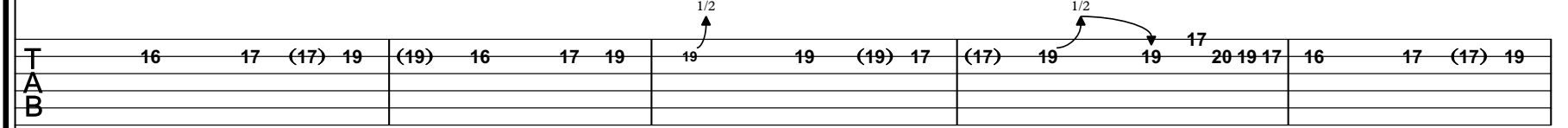
B(add11)



D6(add9)



B(add11)



Bridge (9:05)

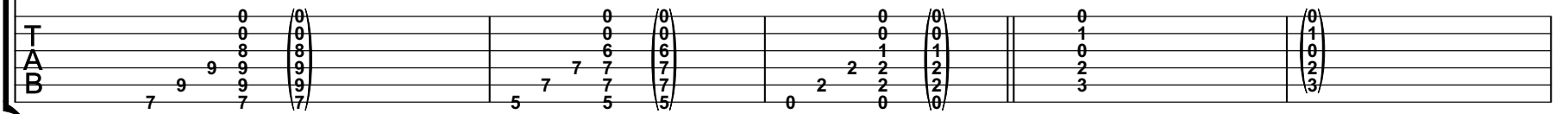
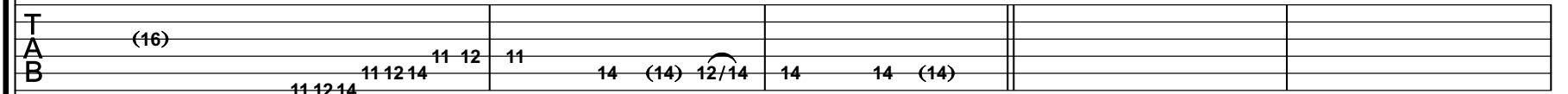
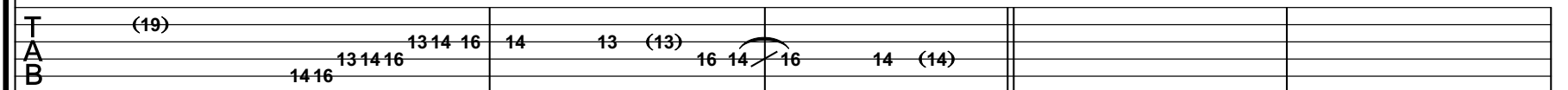
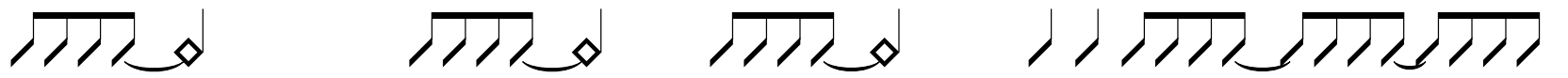
A(add9)



E



C



D Em Em C

pain be - hind those eyes. Say good -

Gtr. 3

TAB

2	3	2	0
0	2	3	2
0	2	3	2
0	2	3	2
0	2	3	2
0	2	3	2

D Em Em

bye to the rage that ne - ver dies.

TAB

0	1	0	2	3
0	2	3	2	0
0	2	3	2	0
0	2	3	2	0
0	2	3	2	0
0	2	3	2	0

Verse 4 (9:38)

E⁵ F#⁵ G⁵ A⁵ B

If you're near-ing the end_ just let___ me in__ and

Gtrs. 5 & 6

let ring-----

P.M.--+ P.M.--+ P.M.+ P.M.--+ P.M.--+ P.M.+

TAB

4	4	4	4	4	4
4	4	4	4	4	4
2	0 0 0	2 0 0 0	2 0 0	2 0 0 0	2 0 0 0

TAB

0	0	0	0	
0	2	2	4	4
0	2	2	4	4
0	2	2	4	4
0	2	2	4	4
0	2	2	4	4

D⁵ A/D G(sus2) D⁵ A/D A/E B

I will take you home.____ If time runs out_ but you're still in doubt re -

P.M.--| P.M.--| P.M.--| P.M.--| P.M.--| P.M.--| P.M.+ P.M.--| P.M.--| P.M.+

T											
A	7	6	7	7	6	9	4	4	4	4	4
B	5 5 5 5	5 5 5 5	5	5 5 5 5	5 5 5 5	7	2	0 0 0	2 0 0 0	2 0 0	2 0 0 0

Pre-chorus (9:53)

D⁵ A/D G(sus2) D⁵ A/D E⁵ F#m E

mem-ber you're not_ a lone.____ Light will shine on e - ven af - ter_ we're

P.M.---| P.M.---| P.M.---| P.M.---| w/ Riff H (Gtr. 3)

T											
A	7	6	7	7	6	9					
B	5 5 5 5	5 5 5 5	5	5 5 5 5	5 5 5 5	7					

D C#7 **D.S. al Coda II**

gone.____ O-pen your eyes to the le-ga-cy you leave be- hind.____

Gtr. 4

w/ Riff G (Gtr. 3)

T											
A	3	(3)	0	2	6	8	10	11	13	14	16
B	0	0	0	0	4	6	8	9	11	12	14

Coda II



Outro (10:58)

B(sus4) A⁶(add9) B(sus4)

O - pen_ your eyes and_ I'll show you_ the light._ A-wake and_ a -
A wake,_____ a rise._____ To live,_____

w/ Riff A1 (Gtr. 1)
w/ Riff A2 (Gtr. 2)
w/ Riff B1 (Gtr. 3)
w/ Riff B2 (Gtr. 4)

w/ Riff D (Gtrs. 3 & 4) (2 times)
w/ Riff F (Gtrs. 5 & 6) (6 times)

A⁶(add9) B(sus4) A⁶(add9)

rise and_ step out of_ the night.. Pain and fear_ will_ dis - app ear_ as your bo-dy turns_ to dust.
to die._____ A wake,_____ a rise._____

B(sus4) A6(add9) B

Your on-ly sin was gi - ving in. It's time to wake up.
To fall, to fly.

Gtr. 7

TAB: 7 9 9 8 9 11 9 8 9 8 9 9 7 9 9

A B

Ah.

TAB: 7 9 9 8 9 11 9 8 9 8 9 9 5 7 7 6 8 9 8 6 8 6 7 7 5 7 7 6 8 9 8 6 8 6 7 9 7 9 9 8 9 11 9 8 9 8 9 9

A B(sus4) B(sus4)/A

w/ Riff D (Gtrs. 3 & 4)
w/ Riff C (Gtr. 1)
w/ Riff C (Gtr. 2) [first 4 bars]

TAB: 7 9 9 8 9 11 9 8 9 8 9 9 5 7 7 6 8 9 8 6 8 6 7 7 5 7 7 6 8 9 8 6 8 6 7 9

B(sus4) B(sus4)/A G(sus2) A(sus4)

Gtr. 2

w/ Riff E (Gtrs. 5 & 6) rit.

TAB: 16 17-16 14-16 17-16 14-16 16 17-16 14-16 14 19 1/2 19 1/2 19 (20) 19 22 1 (24) 7 7