

# I Built the Sky

words and music by Tommy Montgomery

Moderately ♩ = 126

Drum cue

**Riff A**

Grtr. 1 (dist.)

N.C.

Musical notation for Riff A, Gtr. 1 (dist.). Includes staff with treble clef and key signature of one sharp, and a corresponding TAB line with fret numbers.

Musical notation for Riff A, Gtr. 1 (dist.), continuing with a sixteenth-note triplet and a "divisi" instruction. Includes staff with treble clef and key signature of one sharp, and a corresponding TAB line with fret numbers.

Grtr. 2 tacet

**Riff B**

**End Riff A** Em6

Musical notation for Riff B, Gtr. 2 tacet. Includes staff with treble clef and key signature of one sharp, and a corresponding TAB line with fret numbers.

Grtr. 1

*tr*

Gsus2

Asus2

Musical notation for Gtr. 1, including a tremolo effect and chord symbols Gsus2 and Asus2. Includes staff with treble clef and key signature of one sharp, and a corresponding TAB line with fret numbers.

Gtrs. 3 (clean) & 4 (acous.)

**Fill 1**

**End Fill 1**

Musical notation for Gtrs. 3 (clean) & 4 (acous.), including a "let ring" instruction. Includes staff with treble clef and key signature of one sharp, and a corresponding TAB line with fret numbers.

Grtr. 5 (dist. w/ delay)

Musical notation for Grtr. 5 (dist. w/ delay), including a sixteenth-note triplet. Includes staff with treble clef and key signature of one sharp, and a corresponding TAB line with fret numbers.

Em6

F6

Gsus2

Gtrs. 1 & 2

End Riff B

tr

divisi tr

TAB

0 7 0 0 0 7 | 0 7 0 0 | 0 7 0 0 0 7 | 3 3 3 3 5 5

Gtrs. 3 & 4

Fill 2

End Fill 2

let ring-----

TAB

1 3 0 3 3 0 2 0

Gtr. 5

8va-----

3

TAB

15 15 (15) | 15 14 12 14 | 14 14 14 17 | 14 15 17 14 16 17 15 17 18 15 17 19

A D/A A D/A A G Gmaj7 G Gmaj7 G A

Gtr. 4

Gtr. 1

P.M.----- P.M.----- P.M.----- P.M.-----

TAB

7 5 5 5 5 5 7 | 7 5 5 5 5 5 5 | 5 3 3 3 3 3 3 | 5 3 3 3 3 3 5 7 5

Gtr. 2

Gtr. 6 (dist.)

TAB

3 2 | 3 2 | 2 4 | 2 4

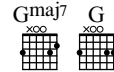
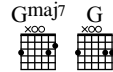
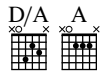
4 2 | 4 2 | 4 5 | 4 5

Gtr. 5 (8)-----

Gtrs. 5 & 7 (dist. w/ delay)

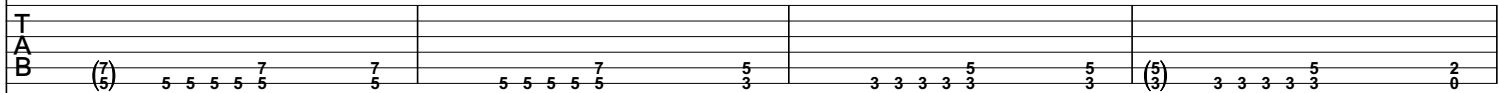
TAB

17 | 9 | 11 12 9 11 11 12



cont. in notation

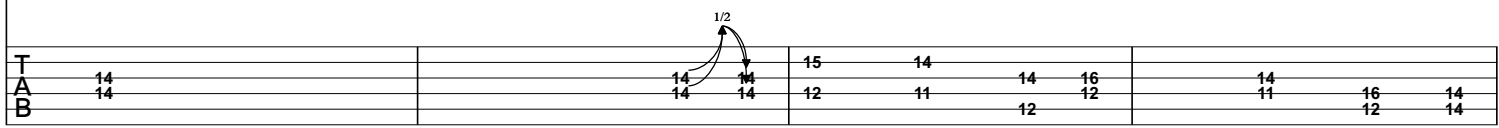
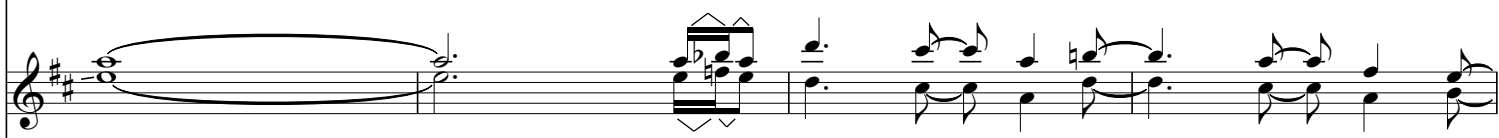
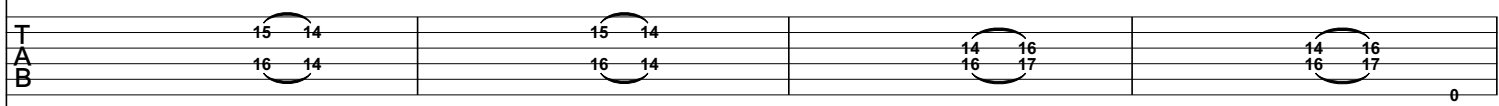
Gtrs. 1 & 2



Gtrs. 3 & 4



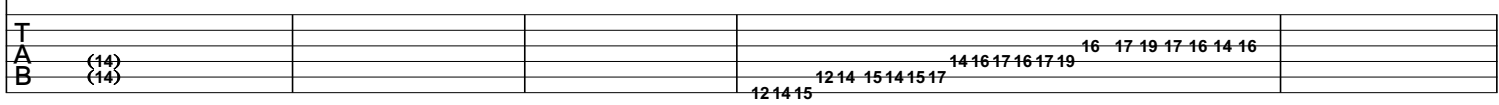
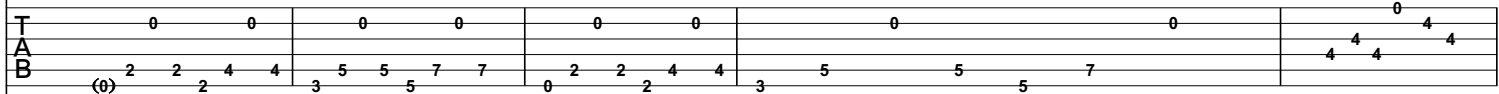
let ring



Gtr. 6 tacet E5 F#5 G Asus4 E5 Gtr. 7 tacet F#5 G Asus4 B B/A



let ring---



Gtrs. 1 & 2 B/G# B/A B B/A

T  
A  
B (5) 4 5 9 7 5

Gtrs. 3 & 4

let ring-----

T  
A  
B (4) 4 4 4 0 4 4 4 4 0 4 4 4 4 0 4 4 4 4

Gtr. 5 #8

Gtr. 7

T  
A  
B (16) 16 16

Gtr. 1 B/G# B/A Cmaj7 D5

Gtr. 2

T  
A  
B 7 6 7 5 5 5 7 7 5 5

Gtrs. 3 & 4

let ring-----

T  
A  
B (4) 4 4 4 4 4 (4) 4 4 4 4 4 (4) 4 4 4 4 4 0 0 0 0 0 0 0 0

Gtr. 5 #8

Gtr. 7

T  
A  
B (16) 16 16 <sup>1/2</sup>

*Verse 1 (1:14)*

Gtrs. 2, 3, 4, 5, & 6 tacet

Gtr. 2 tacet  
A5

A5 G5 D A5

Once u - pon a time I tried to read be - tween the lines. All I ev - er found

Gtr. 1 P.M.----- P.M.----- P.M.----- Gtr. 2 P.M.-----

TAB: 7 7 7 7 7 7 7 7 11 12 7 12 11 12 14 12 11 4 5 5 4 5 7 5 4 12/0 7 7 7 7 7 7 7 7

Fsus2 Gsus2 Bb

was the emp - ti - ness in - side.

Gtr. 1 P.M.----- P.M.----- let ring-----

TAB: (7) 5 5 5 5 5 7 7 5 5 5 5 5 5 1 3 3 3 5 1 0 0 3 3 3 5 1

Gtrs. 3 & 4 let ring----- Gtrs. 2 & 6

TAB: 1 3 3 3 5 0 0 3 1

*Pre-chorus (1:29, 5:21)*

Gtrs. 3 & 4 tacet

C

1. But still life goes on and I'll  
2. And I'll al - ways know that when

Gtr. 1 P.M.----- P.M.----- P.M.-----

TAB: (4) 3 3 2 3 1 3 3 2 3 5 5 3 5 3 3 3 5 3 3 3 3 3 3 3 3

Gtrs. 2 & 6 P.M.----- P.M.----- P.M.-----

TAB: (3) 1 3 3 3 1 1 1 1 1 1 3 3 5 3 3 3 3 3 3 3 3 3 3 3 3





Chorus (1:44, 3:46, 5:37)

Gtrs. 6 & 8 tacet

G

Fsus2

1., 2. I  
3. You

built the sky.  
built the sky.

Gtr. 1 Riff C1

let ring-----|

TAB (3 2 0) | 3 3 0 0 | 0 3 3

Gtrs. 3 & 4 Riff C2

let ring-----|

TAB (3 2 0) | 2 2 2 2 3 | 3 3 3 3 3 | 0 3

End Riff C2

Gtrs. 2 & 6 Riff C3

let ring-----|

TAB (7 5 6) | 5 5 3 | 1 3 0 3

End Riff C3

Gtr. 5

Gtr. 7

TAB (14) (12) | (12) 14 11 12 | 13 15 13 | 9 10 9

D

Gtrs. 2, 3, 4 & 6 tacet

Gtr. 1

let ring-----|

TAB 0 5 0 | 0 5 7 | 0 5 4 0 | 5 0 7 0 7 0 | 0 5 0 | 0 5 0 4 | 3 3 5 4 5 | 5 7 7 8

End Riff C1

Gtr. 5

Gtr. 7

TAB 15 | 12

8  
 Gtr. 1: w/ Riff C1  
 Gtrs. 3 & 4: w/ Riff C2 G Fsus2 D  
 Gtr. 2: w/ Riff C3  
 D Gtrs. 2, 3, 4 & 6 tacet

I ne - ver asked why. And  
 You al - ways knew why. And

T 14 12 (12) 14 11 12 13 15 13 10 12 15 14

Gtrs. 5 & 7 tacet  
 C5 Bb5 Ab5 Eb5 Bb5 Gb5 C# C#sus4 C# A

when it falls, and sha - tters all, I will not des - pair  
 when I fall you must stand tall. There's no - thing to fear

Gtrs. 1 & 2  
 P.M.-----| P.M.-----| P.M.+ P.M.+

T 5 3 8 8 4 6 7 6  
 A 5 3 8 8 4 6 6 6 2  
 B 3 1 6 6 2 4 4 4 0

4 4 4 4 4 4 4 4 2 2 2 2 2 2 4 4 4 4 4 0

To Coda  $\phi$   $\phi$  To Coda  $\phi$  Gtrs. 1 & 2: w/ Riff B Gtrs. 3 & 4: w/ Fill 1  
 C D Em6 Gsus2 Asus2

be - cause you'll still be right there.  
 be - cause

Gtr. 5  
 P.M.----| P.M.----|

T (2) 7 6 7 5 5 7 7 16 14 16 14 13 14 13 13 (13) 12 14 15  
 A (2) 7 7 7 0 2 3 3 3 3 3 5 5 5 5 5 5 5 12 14 12 14 / 16  
 B (0) 7 7 7 0 2 3 3 3 3 3 5 5 5 5 5 5 5 12 14 12 14 / 16

Em6 Gtrs. 3 & 4: w/ Fill 2 Verse 2 (2:34)  
 F6 Gsus2 A Gtr. 5 tacet

Once u - pon a time I saw the

Gtr. 5  
 Gtr. 1  
 P.M.----| P.M.----|

Riff D

T 17 15 17 15 15 17 15 14 14 (14) 12 14 19 15 15 16 17 17 17 16 15 17  
 A 7  
 B 5



G5 D/F# G5 D/F# G D/F# A

clouds roll a - cross the sky. As the rain fell

P.M.-----| P.M.-----| P.M.-----|

TAB 5 5 5 5 7 5 3 2 3 2 3 2 5 5 5 5 5 7 7 5

\* Cue notes played first time only

G D

I felt a pain in my eye.

End Riff D

P.M.-----| P.M.-----|

TAB (2/0) 5 5 5 5 7 7 5 5 5 5 5 5 3 2 3 5 5 4 5 7

w/ Riff C (Gtr. 1)  
w/ Riff A (Gtr. 2)

A G5 D/F# G5 D/F# G D/F# A

When I looked up I saw that the sky was bare.

All of my pain was the absence of your stare.

Bridge (3:04)  
Dm

There I was try - - ing to

Gtr. 6 Rhy. Fig. 1

TAB 7 5 5 7 5

Gtr. 1 Riff E

TAB 0 8 0 0 7 0 0 5 0 0 4 0 5 0 7 0 0 8 0 0 7 0 0 5 0 0 4 0 5 0 7 0

A

find a way out.

End Rhy. Fig. 1

T  
A  
B

|   |   |
|---|---|
| 7 | 7 |
| 5 | 5 |

End Riff E

T  
A  
B

|                                 |                                 |
|---------------------------------|---------------------------------|
| 0 8 0 0 7 0 0 5 0 0 4 0 5 0 7 0 | 0 2 0 0 4 0 0 5 0 0 7 0 8 0 7 0 |
|---------------------------------|---------------------------------|

w/ Rhy. Fig. 1 (Gtr. 6)  
w/ Riff E (Gtr. 1)

Dm

All the time wast - ed in fear and in doubt.

Gm

Build - ing my pri - son one brick at a time.

End Rhy. Fig. 2

Gtr. 6 Rhy. Fig. 2

P.M.----+ P.M.----+ P.M.----+ P.M.---|

T  
A  
B

|   |         |         |         |
|---|---------|---------|---------|
| 5 | 5       | 5       | 7       |
| 3 | 3 3 3 3 | 3 3 3 3 | 5 5 5 5 |

Riff F

Gtrs. 1 & 2

End Riff F

T  
A  
B

|                                 |                                 |                                 |                                 |
|---------------------------------|---------------------------------|---------------------------------|---------------------------------|
| 0 8 0 0 7 0 0 5 0 0 4 0 5 0 7 0 | 0 8 0 0 7 0 0 5 0 0 4 0 5 0 7 0 | 0 8 0 0 7 0 0 5 0 0 4 0 5 0 7 0 | 0 2 0 0 4 0 0 5 0 0 7 0 8 0 7 0 |
|---------------------------------|---------------------------------|---------------------------------|---------------------------------|

Gtr. 6: w/ Rhy. Fig. 2  
Gtr. 1: w/ Riff F

Gm

You made me break through and reach for the sky.

Gtr. 2

T  
A  
B

|                                    |                                    |                                    |                                    |
|------------------------------------|------------------------------------|------------------------------------|------------------------------------|
| 0 12 0 0 10 0 0 8 0 0 7 0 8 0 10 0 | 0 12 0 0 10 0 0 8 0 0 7 0 8 0 10 0 | 0 12 0 0 10 0 0 8 0 0 7 0 8 0 10 0 | 0 5 0 0 7 0 0 8 0 0 10 0 13 0 12 0 |
|------------------------------------|------------------------------------|------------------------------------|------------------------------------|

Gtrs. 2 & 6 tacet

D5 C5 F5 C/E G5 Asus2

And

Gtr. 1

Gtr. 4

TAB

TAB

Gtrs. 3 & 4 tacet

D.S. al Coda

Bb5 C5

all this time I ne - ver knew that

Gtr. 1

P.M.-----| P.M.-----| P.M.-----|

TAB

Gtr. 2

P.M.-----| P.M.-----|

TAB



### Guitar Solo (4:21)

Gr. 2 tacet

C#m      A      B      E      F#m7      E/G#

there.

Gr. 5

Gr. 7

Gr. 1

P.M.-----|      let ring---

Detailed description of the first system: This system contains three guitar parts. Gr. 5 (Guitar 5) has a treble clef staff with a melodic line and a TAB staff with fret numbers 12, 12, (12), 11, 12, 12, 14, 11, 12, 14, 12, 11, 12. Gr. 7 (Guitar 7) has a treble clef staff with a more complex melodic line and a TAB staff with fret numbers 11, 11, (11), 11, 12, 12, 14, 12, 14, 14, 16, 14, 16, 14, 17, 14, 16, 14, 13, 14, 14. Gr. 1 (Guitar 1) has a treble clef staff with a chordal accompaniment and a TAB staff with fret numbers 6, 4, 2, 0, 0, 2, 4, 0, 4, 4, 2, 2, 2, 0, 2, 2, 4.

A      E      F#7      Bm      G

8va-----|      8va-----|

let ring-----|      P.M.-|      P.M.-|      P.M.-|      let ring-----|

Detailed description of the second system: This system continues the guitar parts. Gr. 5 has a treble clef staff with a melodic line and a TAB staff with fret numbers 19, 17, 19, 17, 18, 19, 18, 16, 18, 19, 19, 18, 16, 16, 16. Gr. 7 has a treble clef staff with a melodic line and a TAB staff with fret numbers 17, 16, 14, 13, 14, 16, 14, 13, 14, 12, 11, 14, 13, 14, 13, 14, 16, 14, 16, 15, 17, 14, 17, 17, (17), 16. Gr. 1 has a treble clef staff with a chordal accompaniment and a TAB staff with fret numbers 0, 0, 0, 2, 0, 0, 0, 2, 4, 4, 0, 0, 2, 4, 3, 0, 0, 4, 4, 0, 2, 3, 0, 0, 3, 0, 0, 3.

Musical staff with treble clef, key signature of three sharps (F#, C#, G#), and a common time signature. It features a triplet of eighth notes, a measure with a fermata over a dotted quarter note, and a measure with a triplet of eighth notes. Chord markings 'A' and 'D#11' are present above the staff. A dashed line with a circled '8' and a '7' indicates a fretting sequence.

Tablature for the first system, showing fret numbers on strings A, B, and G. The sequence includes: 19 17 19 17, 19 18, 14 13 13, (13), 11 13 14, 12, 14.

Musical staff with treble clef, key signature of three sharps, and a common time signature. It features a triplet of eighth notes, a measure with a fermata over a dotted quarter note, and a measure with a triplet of eighth notes. Chord markings 'T' and 'T' are present above the staff. A dashed line with a circled '8' and a '7' indicates a fretting sequence.

Tablature for the second system, showing fret numbers on strings T, A, and B. The sequence includes: (16) 24 16 23, 17 16, 15 14 15 14, 16 14, 14 13 13, (13), 12 14 16, 13, 14.

Musical staff with treble and bass clefs, key signature of three sharps, and a common time signature. It features a triplet of eighth notes, a measure with a fermata over a dotted quarter note, and a measure with a triplet of eighth notes. Chord markings 'P.M.' and 'P.M.-1' are present below the staff.

Tablature for the third system, showing fret numbers on strings T, A, and B. The sequence includes: (3) 3 3 3 3 3 3 3 3, 2 2 0, 7 5, 5 5 5 5 5 5 5 5.

Musical staff with treble clef, key signature of three sharps, and a common time signature. It features a triplet of eighth notes, a measure with a fermata over a dotted quarter note, and a measure with a triplet of eighth notes. Chord markings 'E', 'C#/E#', 'Bm/F#', and 'E/G#' are present above the staff. A dashed line with a circled '8' and a '7' indicates a fretting sequence.

Tablature for the fourth system, showing fret numbers on strings T, A, and B. The sequence includes: 15 13 14 16 14 15, 18 14 16 18 15 18, 19 16 18 17 19, 21, (21).

Musical staff with treble clef, key signature of three sharps, and a common time signature. It features a triplet of eighth notes, a measure with a fermata over a dotted quarter note, and a measure with a triplet of eighth notes. Chord markings 'P.M.' and 'P.M.-1' are present below the staff.

Tablature for the fifth system, showing fret numbers on strings T, A, and B. The sequence includes: 16 14 16 18 14 16, 18 11 13 14 12 14, 15 13 14 16 15, 17.

Musical staff with treble and bass clefs, key signature of three sharps, and a common time signature. It features a triplet of eighth notes, a measure with a fermata over a dotted quarter note, and a measure with a triplet of eighth notes. Chord markings 'P.M.-1', 'P.M.-1', 'P.M.-1', 'P.M.-1', 'P.M.-1', 'P.M.-1', 'P.M.-1', 'P.M.-1', 'P.M.-1', and 'P.M.' are present below the staff.

Tablature for the sixth system, showing fret numbers on strings T, A, and B. The sequence includes: 9 7 7 7 7 7 9 7 7, 11 8 8 8 8 8 8 8 8, 12 9 9 9 9 9 9 9 9, 7 7 7 7 7 7 7 7.

Gtr. 5 (8) A

Gtrs. 5 & 7 tacet

Gtr. 5 (8) A

Gtr. 7

Gtr. 7

Gtr. 1

Gtr. 1

TAB

Gtr. 2

Gtr. 2

TAB

Gtr. 6

Gtr. 6

TAB

Gtr. 1

E7/G#

A5

Gtr. 1

TAB

Gtr. 2

Gtr. 2

TAB

Gtr. 6

Gtr. 6

TAB

Gtr. 6 tacet

Gtr. 1

G/A A A5 G/A Dm/A E7/A A5 G/A

|   |     |             |             |               |             |             |  |
|---|-----|-------------|-------------|---------------|-------------|-------------|--|
| T |     |             |             |               |             |             |  |
| A | (2) | 5 4 7       | 6 4 6       | 5 4 10        | 9 7 9       | 5 4 7       |  |
| B |     | 0 0 5 5 0 7 | 0 7 0 5 0 7 | 0 0 0 5 5 0 7 | 0 7 0 6 0 6 | 0 0 5 5 0 7 |  |

Gtrs. 2 & 6

Gtr. 2

|   |     |  |  |  |  |                         |                         |
|---|-----|--|--|--|--|-------------------------|-------------------------|
| T | (2) |  |  |  |  | 14 14 14 14 14 14 14 14 | 14 14 14 14 14 14 14 14 |
| A |     |  |  |  |  |                         |                         |
| B |     |  |  |  |  |                         |                         |

D.S.S. al  $\phi\phi$   
Gtr. 4 tacet

Gtr. 1

A Cadd9 G/B Cadd9 D5

|   |             |   |   |       |       |     |   |
|---|-------------|---|---|-------|-------|-----|---|
| T |             |   |   |       |       |     |   |
| A | 6           | 4 | 6 | 3     | 3     | 3   | 3 |
| B | 0 7 0 5 0 7 | 3 | 3 | 0 0 3 | 0 2 3 | 0 0 | 3 |

Gtr. 2

|   |                         |                         |                      |                      |       |    |  |             |             |    |
|---|-------------------------|-------------------------|----------------------|----------------------|-------|----|--|-------------|-------------|----|
| T |                         |                         |                      | 12                   |       | 12 |  | 15 13 15 13 |             |    |
| A | 14 14 14 14 14 14 14 14 | 14 14 14 14 14 14 14 14 | 12 13 15 13 12 13 15 | 15 13 15 13 12 13 12 | 14 12 |    |  | 14 12 14 12 | 12 10 12 10 |    |
| B |                         |                         |                      |                      |       |    |  |             | 12 10       | 13 |

Outro (6:11)

$\phi\phi$  C D

Em6 w/ Riff B (Gtrs. 1 & 2)

I'll still be right here.

Gtrs. 1 & 2

P.M.-----| P.M.-----|

|   |   |           |   |   |             |   |  |
|---|---|-----------|---|---|-------------|---|--|
| T |   |           |   |   |             |   |  |
| A | 5 | 5         | 7 | 7 |             |   |  |
| B | 3 | 3 3 3 3 3 | 5 | 7 | 5 5 5 5 5 5 | 7 |  |

Gtr. 5

$8^{va}$  + + +

|   |       |       |                   |       |    |   |    |  |  |
|---|-------|-------|-------------------|-------|----|---|----|--|--|
| T |       |       |                   |       |    |   |    |  |  |
| A | 12 12 | 13 13 | 12 12 15 15 12 12 | 13 13 | 15 | 14 17 22 17 15 14 15 17 22 17 15 14 15 17 | 24 |  |  |
| B | 15 15 | 14 14 | 17 16             | 14 15 | 17 |   |    |  |  |

Gtrs. 3 & 4: w/ Fill 1

Gtrs. 3 & 4: w/ Fill 2

Gtr. 5

Gsus2 Asus2 Em6 F6 Gsus2

|   |  |    |       |    |          |       |  |          |          |
|---|--|----|-------|----|----------|-------|--|----------|----------|
| T |  | 17 | 15 17 | 15 | 15 14 12 | 14    |  | 15 17 18 | 15 17 19 |
| A |  |    |       |    |          | 14    |  | 14 15 17 | 14 16 17 |
| B |  |    |       |    |          | 14 17 |  |          |          |

Gtr. 5 (8) A5 G/A Gtr. 5 tacet A A5 G/A Dm/A

Gtrs. 1 & 2 P.M. P.M. P.M. P.M. P.M. P.M. P.M. P.M.

|   |    |   |   |   |   |   |   |   |    |
|---|----|---|---|---|---|---|---|---|----|
| T | 17 |   |   |   |   |   |   |   |    |
| A | 2  | 5 | 4 | 7 | 6 | 4 | 6 | 5 | 10 |
| B | 0  | 0 | 0 | 0 | 0 | 0 | 0 | 0 | 0  |

Gtrs. 1 & 2 E7/A A5 G/A A

P.M. P.M. P.M. P.M. P.M. P.M. P.M. P.M. P.M.

|   |   |   |   |   |   |   |   |   |   |
|---|---|---|---|---|---|---|---|---|---|
| T |   |   |   |   |   |   |   |   |   |
| A | 9 | 7 | 9 | 2 | 5 | 4 | 7 | 6 | 4 |
| B | 0 | 0 | 0 | 0 | 0 | 0 | 0 | 0 | 0 |

Gtr. 4 Cadd9 G/B Cadd9 Asus2

|   |   |   |   |   |   |   |   |   |   |   |   |   |   |   |
|---|---|---|---|---|---|---|---|---|---|---|---|---|---|---|
| T | 3 | 3 | 3 | 0 | 0 | 0 | 3 | 3 | 3 | 3 | 2 | 0 | 2 | 0 |
| A | 0 | 0 | 0 | 2 | 2 | 2 | 2 | 2 | 2 | 2 | 2 | 2 | 2 | 2 |
| B | 3 | 2 | 3 | 0 | 0 | 0 | 0 | 0 | 0 | 0 | 0 | 0 | 0 | 0 |

Gtrs. 1 & 2

|   |   |   |   |   |  |  |  |  |  |
|---|---|---|---|---|--|--|--|--|--|
| T | 3 | 3 | 3 |   |  |  |  |  |  |
| A | 0 | 0 | 0 | 2 |  |  |  |  |  |
| B | 3 | 2 | 3 | 0 |  |  |  |  |  |

Gtr. 3

|   |  |  |   |  |  |  |  |  |   |
|---|--|--|---|--|--|--|--|--|---|
| T |  |  | 0 |  |  |  |  |  | 0 |
| A |  |  | 2 |  |  |  |  |  | 0 |
| B |  |  | 2 |  |  |  |  |  | 2 |



Gtr. 2 tacet  
N.C.

Gtrs. 3 & 4 tacet

Gtr. 2 A5

T  
A  
B

Gtr. 1

T  
A  
B

T  
A  
B