

Across a Silver Sky

Tommy Montgomery

$\text{♩} = 112$

3

5

7

9

11

13

15

17

2

19



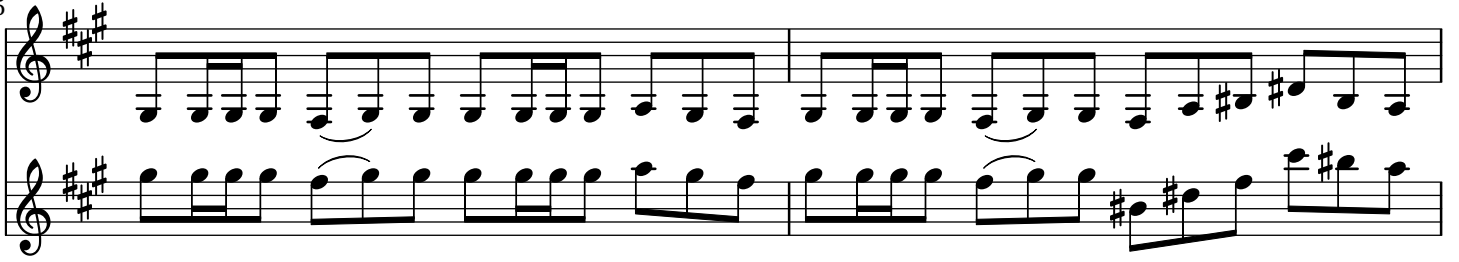
21



23



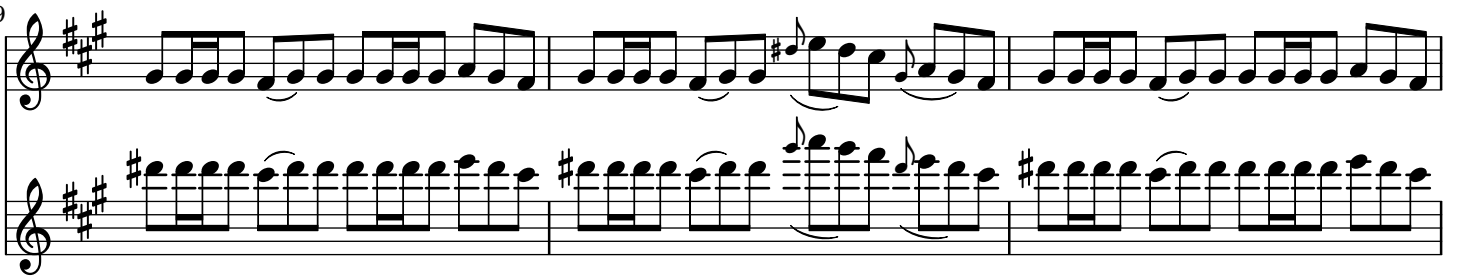
25



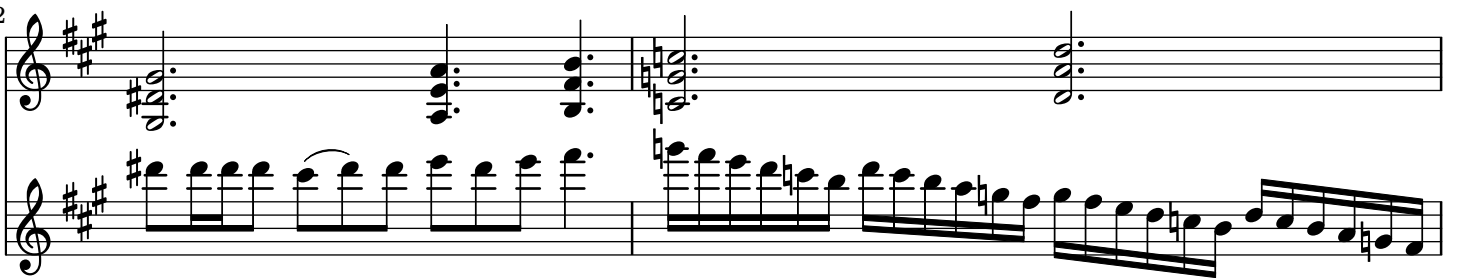
27



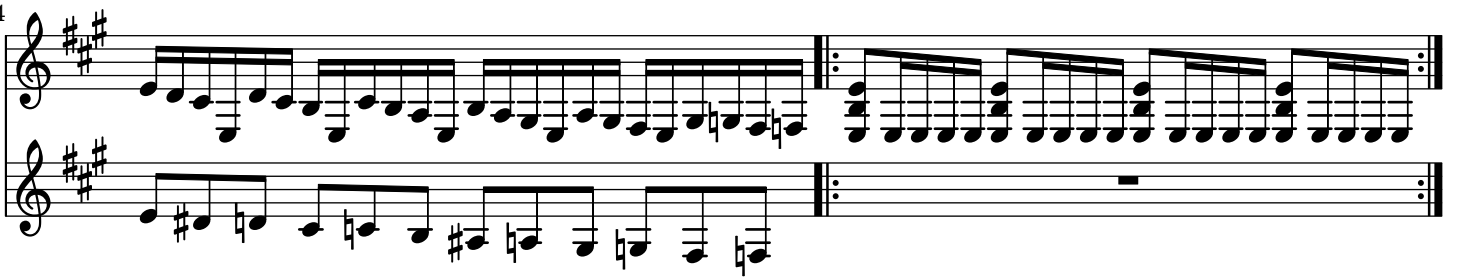
29



32



34



36

Two staves of music. The top staff is in treble clef with a key signature of three sharps (F#, C#, G#). The bottom staff is in bass clef with the same key signature. Both staves contain eighth-note patterns with repeat signs.

38

Two staves of music. The top staff is in treble clef with a key signature of three sharps. The bottom staff is in bass clef with a key signature of three sharps. The music continues with eighth-note patterns.

40

Two staves of music. The top staff is in treble clef with a key signature of three sharps. The bottom staff is in bass clef with a key signature of three sharps. The music continues with eighth-note patterns.

42

Two staves of music. The top staff is in treble clef with a key signature of two sharps (F#, C#). The bottom staff is in bass clef with a key signature of two sharps. The music continues with eighth-note patterns.

44

Two staves of music. The top staff is in treble clef with a key signature of two sharps. The bottom staff is in bass clef with a key signature of two sharps. The music continues with eighth-note patterns.

46

Two staves of music. The top staff is in treble clef with a key signature of two sharps. The bottom staff is in bass clef with a key signature of two sharps. The music continues with eighth-note patterns.

48

One staff of music in treble clef with a key signature of two sharps. The music continues with eighth-note patterns.

50

One staff of music in treble clef with a key signature of two sharps. The music continues with eighth-note patterns.

52

One staff of music in treble clef with a key signature of two sharps. The music continues with eighth-note patterns.

4

54

56

58 $\text{♩} = \text{♩} \cdot (\text{♩} = 112)$

60 $\text{♩} \cdot = 112$

61

63

65

67 B -> F# -> G# -> D# section 16

85 3x

87

89 over F

91

93