

Awake

word and music by Tommy Montgomery

Moderately ♩=96

B

Keyboard (arr.) brass/strings

pad

A G A B

Faster ♩=136

Intro (0:32)

Riff A

B5

Gr. 1 (dist. w/ chorus)

G5 D5 A5 E5

Gr. 2 (dist. w/ chorus)

T	16		17	14	12	11	12 11
A	16	19	17	16	14	13	14 13 14
B							16

Riff B

Gr. 3 (dist.) & 4 (dist.) *

P.M.--+ P.M.--+ P.M.+ P.M.--+ P.M.--+ P.M.+

T						3		0
A	4	4	4	4	4	3	2	2
B	4	4	4	4	4	0	0	2
	2 0 0 0	2 0 0 0	2 0 0 0	2 0 0 0	2 0 0 0	0	0	2
						3		0

* composite arrangement

End Riff A

B5 G5 D5 A5

TAB: (14) 12 16 16-14 13 14 14-13 14 16 14 12 14/12

End Riff B

P.M.--| P.M.--| P.M.↓ P.M.--| P.M.--| P.M.↓

TAB: 4 4 4 4 4 4 4 4 4 4 4 4 3 3 0 2 2 0 2 3 5

Riff C
Bsus4

Gtrs. 1 & 2

Bsus4/A

TAB: 16 18 16 14 16 18 16 14 16 18 16 14 16 14 16 16 16 16 16

Riff D

Gtrs. 3 & 4

P.M.-----

TAB: 2 2 4 2 2 4 2 4 2 2 4 2 0 2 4 0 2 4 0 2

Bsus4

TAB: (16) 18 16 14 16 16 18 16 14 16 18 16 14 16

P.M.-----| 1/2 P.M.-----

TAB: 4 0 2 4 0 2 4 (4) 2 2 4 2 2 4 2 2

Gr. 4 tacet

4

Em

D/F#

B

Gr. 2

(8)

Musical staff for Gr. 2 in treble clef, key of E major. It contains a melodic line with eighth and quarter notes, some beamed together, and a final half note. A circled '8' indicates an 8-measure phrase.

TAB for Gr. 2: Treble (T) and Bass (B) strings. Fingerings: 1 on 17, 17, 15, 1/2 on 19, 19, 17, 15, 17, 15, 19.

Gr. 1

8va

Musical staff for Gr. 1 in treble clef, key of E major. It contains a melodic line similar to Gr. 2 but with an octave shift indicated by '8va'.

TAB for Gr. 1: Treble (T) and Bass (B) strings. Fingerings: 1/2 on 19, 19, 17, 1/2 on 20, 20, 19, 17, 19, 17, 20.

Gr. 3

Musical staff for Gr. 3 in treble clef, key of E major. It contains chordal accompaniment for Em, D/F#, and B.

TAB for Gr. 3: Treble (T) and Bass (B) strings. Chord diagrams: Em (2, 2, 0), D/F# (5, 2), B (4, 4, 2).

Am/C

N.C.

Cmaj7

(8)

Musical staff for Am/C, N.C., and Cmaj7 in treble clef, key of E major. It contains a melodic line with eighth and quarter notes, some beamed together, and a final half note. A circled '8' indicates an 8-measure phrase.

TAB for Am/C, N.C., and Cmaj7: Treble (T) and Bass (B) strings. Fingerings: 15, 17, 15, 17, 19, 17, 16, 17, 16, 17, 16, 19, 18, 19, 16, 17, 16, 17, 20.

Musical staff for Am/C, N.C., and Cmaj7 in treble clef, key of E major. It contains a melodic line with eighth and quarter notes, some beamed together, and a final half note. A circled '8' indicates an 8-measure phrase.

TAB for Am/C, N.C., and Cmaj7: Treble (T) and Bass (B) strings. Fingerings: 16, 17, 16, 19, 11, 9, 8, 10, 9, 10, 9, 12, 11, 12, 9, 10, 9, 10, 8, 9, 12.

Musical staff for Am/C, N.C., and Cmaj7 in treble clef, key of E major. It contains chordal accompaniment for Am/C, N.C., and Cmaj7.

TAB for Am/C, N.C., and Cmaj7: Treble (T) and Bass (B) strings. Chord diagrams: Am/C (2, 2, 3), N.C. (empty), Cmaj7 (5, 3, 3).

Riff E

Badd11

Badd11/A

Gtrs. 5 (clean w/ chorus) & 6 (acous.)

4
2
2

Gtr. 3 tacet

End Riff E

Badd11

D⁶/₉

Gsus2

Asus4

Verse 1 (1:41)

Bsus4

A⁶/₉

A- wake, _____

a- rise, _____

Riff F

End Riff F

Gtrs. 5 & 6: w/ Riff F (3 times)

Bsus4

A⁶/₉

Bsus4

and let the sun _____ o - pen your eyes. _____

A- lign _____

A⁶/₉ Bsus4

your mind. You were ne -

A⁶/₉

- ver that blind.

Gtrs. 5 & 6: w/ Riff E
Gtr. 1 Badd11 Badd11/A

T
A
B

7 6 7 7 9 7 6 7 5

Badd11 D⁶/₉ Gsus2 Asus4

T
A
B

9 8 9 9 11 11 12 14 14 (14) 12 10 12

Verse 2 (2:25)

Gtr. 1 tacet

Gtrs 5 & 6: w/ Riff F (4 times)

Bsus4 A⁶/₉

To live, to die.

Gtrs. 3 & 4 P.M.+

T
A
B

2 4 4 2 2 4 4 2 0 2 0 0 2 2 2 2

Bsus4 A6%

Just clip your wings _____ and you'll fly. _____

P.M.-| P.M.-| P.M.-| P.M.-|

T
A
B

2 4 4 2 2 2 2 4 4 2 2 2 4 2 2 0 0 0 0 4 2 2 2 2 2

Bsus4 A6%

w/ Riff D (Gtrs. 3 & 4)

Give up, _____ give in. _____

T
A
B

Bsus4 A6%

Don't let the mad - ness be- gin. _____

T
A
B

Gtr. 4 tacet

Esus2 Gsus2 Asus2 Esus2 Gsus2 Asus2 Bsus2

Gtr. 3

P.M.-| P.M.-| P.M.-| P.M.-| P.M.-| P.M.-| P.M.-| P.M.-|

T
A
B

0 2 2 4 3 5 5/7 5 7 7/9 5 7 7/9 0 2 2 4 3 5 5/7 5 7 7/9 7 9 9/11

F#m G#

T
A
B

9 11 11 9 10 9 10 11 9 11 11 9 10 9 10 11 11 13 13 11 14 11 13 13 11 13 13 11 14 11 13 13

F#m E

TAB: 9 11 11 9 10 9 10 11 | 9 11 11 9 10 9 10 11 | 7 9 7 9 7 9 | 7 9 7 9 7 9

Gr. 3 B A

TAB: 7 9 9 6 9 6 8 9 | 7 9 9 6 9 6 8 9 | 5 7 7 4 6 4 6 7 | 5 7 7 4 6 4 6 7

Gr. 4 P.M.

TAB: 7 6 9 7 6 7 9 6 | 7 6 9 7 6 7 9 6 | 5 4 7 6 7 6 7 7 | 5 4 7 6 7 6 7 7

Riff G End Riff G

D C#7

TAB: 5 7 7 5 7 5 7 7 | 5 7 7 5 7 5 7 7 | 4 6 6 4 6 4 4 | 7 4 5 7 7

P.M. P.M. P.M. P.M. P.M.

TAB: 9 12 11 12 10 12 12 | 9 12 11 12 10 12 12 | 4 4 6 4 4 4 4 4 | 6 6 6 4 4 4 4 4



Chorus (3:31, 5:40, 10:07)

F#5 G5 D5 A5

Eyes o - pen wide, — try-ing to see_ the truth.

Gtrs. 3 & 4

P.M.---| P.M.---| P.M.-| P.M.---| P.M.---| P.M.-|

T						3					3						
A						0					2				2		
B	4	4	4	4	4	4	4	4	4	0	0	0	0	0	0		
	2	0	0	0	2	0	0	0	2	0	0	0	0	2	0	0	0

E5 F#5

I don't know why — I

P.M.---| P.M.---| P.M.-| P.M.---| P.M.---| P.M.-|

T																	
A	(2)																
B	2	2	4	4	4	4	4	4	4	4	4	4	4	4	4	4	4
	0	0	2	0	0	0	2	0	0	0	2	0	0	0	2	0	0

C#5 B5 E5 F#5

ne - ver_ see you. Sun in_ my eyes,

P.M.-| P.M.-| P.M.---| P.M.---| P.M.-|

T																	
A	6	6	4														
B	4	4	4	4	4	4	2	4	4	4	4	4	4	4	4	4	4
								2	2	2	2	2	3	2	0	2	0

G5 D5 A5

wash-ing a - way_ the pain. —

P.M.---| P.M.---| P.M.-|

Gr. 4

T 3 3 2 2 3 5
A 0 0 0 0 0 0
B 4 4 4 4 4 4
2 0 0 0 2 0 0 0 2 0 0 3

F#5 C#7 Dmaj7

A - wake to day, _____ to - mor - row_ the

P.M.--| P.M.--| P.M.-| P.M.--| P.M.--| P.M.-| P.M.--|

T 6 6 7
A 4 4 6
B 4 6 7
2 0 0 0 2 0 0 0 2 0 0 0 4 4 4 4 4 5

E5 C#/E#

dark - ness _____ will fade back _____ to light.

P.M.-----| P.M.-----|

T (7) 7 7 9 9 9 11
A (6) 6 6 9 9 9 11
B (5) 5 5 7 7 7 8

To Coda ⊕ I
To Coda ⊕ II

F#5 D/F# G5 A5 F#/A#

T
A
B (11) 8 11 9 12 9 12 10 14 12 16 13

Grtr. 4 tacet
Grtr. 3 B5 F#5 G5 F#5 G5 F#5

T
A
B 4 4 2 0 0 0 4 4 2 0 0 0 4 4 2 0 0 4 4 2 0 0 0 4 4 2 0 0 4 5 2 3 0 2 5 3 0 2

G5 F5 B5 A E Em/G

T
A
B 6 5 3 3 4 4 2 0 0 0 4 4 2 0 0 0 4 4 2 0 0 0 4 4 2 0 0 0 4 2 0 0 2 3

F#7b9 Cmaj7 Badd11 Badd11/A

Grtrs. 5 & 6: w/ Riff E Grtr. 3 tacet
Grtr. 1

T
A
B 2 3 1 2 4 5 2 4 5 3 4 6 7 5 7 7 7 6 7 7 9 7 6 7

Gr. 1

Badd11 D⁹ 8^{va} Gsus2 Asus4

T
A
B

5 9 8 9 9 11 14 16 14 16 16 15 14 19 14 17 14 16 14 15 14 16 14 16

Verse 2 (4:38)

Gr. 1 tacet

B A

I've felt the won - der as the pride left my eyes.

Gtrs. 3 & 4

P.M.+ P.M.+ P.M.+ P.M.

T
A
B

7 7 7 7 5 7 7 5 7 5 7 7 7 7 6 7 7 5 7 5 5 5 7/9 7 7 7 9 7 9

Asus2 B

I've seen the ro - ses as they reach

P.M.+ P.M.+

T
A
B

11 7 9 9 7 0 7 7 7 7 5 7 7 5 7 5 7 7 7 7 6 7 7 5 7

A Asus2 Bsus4

for_ the_ skies. Death and de- cay_ our_ mor

P.M. P.M. P.M.

T
A
B

5 5 5 7/9 7 7 7 9 7 9 11 7 9 9 7 0 2 2 2 2 2 2 2 2 2 2 2 2 2 4 2 2 2

Bsus4/A

- tal_ shame_ 'til our soul leaves_ the earth.

P.M.

T
A
B

4 2 2 2 2 2 2 2 4 2 2 2 2 2 2 2 0 0 0 0 0 0 2 0 0 0 0 0 4 0 0 0

Bsus4

Fu - tile plan_ from an

P.M.

T
A
B

4 0 0 0 0 0 0 4 0 0 0 2 0 0 0 2 2 2 2 2 2 2 2 2 2 2 4 2 2 2

Bsus4/A

ig - no - rant man, — we all de - serve — to burn.

P.M.-----

T
A
B 2 2 2 2 2 2 4 2 2 2 2 2 2 0 0 0 0 0 0 2 0 0 0 0 0 4 0 0 0

P.M.-----

T
A
B 0 0 0 4 0 0 0 0 0 0 4 0 0 0 0 2 0 0 0 0

Gtr. 3 N.C.

5 2 5 2 4 2 4 2 4 2 5 4 2

Gtr. 4

17 14 17 14 16 14 16 14 16 14 17 16 14

Two systems of guitar notation. Each system consists of a standard notation staff and a TAB staff. The first system has two measures of music. The second system also has two measures. The TAB notation includes fret numbers and bar lines.

Pre-Chorus (5:14)

Pre-chorus section with lyrics: "Ro - ses are red with the blood of the". Includes guitar riffs for strings 3 & 4, labeled "Riff H". The notation includes standard notation with lyrics, guitar riffs, and TAB notation.

Chorus section with lyrics: "dead. See the light for the dark-ness it will be - come." Includes guitar riffs for strings 3 & 4, labeled "End Riff H". The notation includes standard notation with lyrics, guitar riffs, and TAB notation.

C#7

Gtr. 3

let ring-----

T 4 6 7 4 6 7 6 7 4 6 7 4

A 6 6 6 6 6 6 6 6 6 6 6 6

B 4 6 6 4 6 4 6 4 6 4 6 4

Gtr. 4

T 2 4 6 7 4 6 7 6 7 9 6 7 9

A 4 6 8 9 6 8 9 8 9 11 8 9 11

B 4 6 8 9 6 8 9 8 9 11 8 9 11

D.S. al Coda I

let ring-----

D°7 C#7

T 7 4 5 7 4 5 7 7 7 7 7 7 7 7 7 7

A 6 6 6 6 6 6 6 6 6 6 6 6 6 6 6 6

B 6 4 6 4 6 4 6 6 6 6 6 6 6 6 6 6

T 7 9 10 7 9 10 6 6 6 6 7 7 7 7 6 6

A 9 11 12 9 11 12 6 6 6 6 6 6 6 6 6 6

B 9 11 12 9 11 12 4 4 4 4 5 5 5 5 4 4

Coda I



Interlude (6:16)

Gr. 1

B

Musical notation for Gr. 1, system B. The staff shows a treble clef with a key signature of three sharps (F#, C#, G#) and a 4/4 time signature. The melody consists of eighth notes with slurs. Below the staff is a TAB section with strings T, A, and B. The TAB notes are 8 9 8 9 and 8 9 8 9.

Gr. 3

Musical notation for Gr. 3, system B. The staff shows a treble clef with a key signature of three sharps and a 4/4 time signature. The melody consists of eighth notes with slurs. Below the staff are P.M. (pedal markings) and a TAB section. The P.M. markings are P.M.---| P.M.-----| P.M.---| P.M.-----|. The TAB notes are 9 9 7 7 7 7 9 9 7 7 7 7 and 9 9 7 7 7 7 9 9 7 7 7 7.

D

B

Musical notation for system D. The staff shows a treble clef with a key signature of three sharps and a 4/4 time signature. The melody consists of eighth notes with slurs. Below the staff is a TAB section with strings T, A, and B. The TAB notes are 11 12 11 13 and 11 9 12 11, and 8 9 8 9. Below this is another musical staff with P.M. markings and a TAB section. The P.M. markings are P.M.--| P.M.---| P.M.--| P.M.---| P.M.--| P.M.---|. The TAB notes are 12 12 10 10 10 10 12 12 10 10 10 10 and 9 9 7 7 7 7 9 9 7 7 7 7.

A

6

Musical notation for system A. The staff shows a treble clef with a key signature of three sharps and a 4/4 time signature. The melody consists of eighth notes with slurs. Below the staff is a TAB section with strings T, A, and B. The TAB notes are 8 9 8 9 and 6 7 9 7, and 10 9 7 9 7 6. Below this is another musical staff with P.M. markings and a TAB section. The P.M. markings are P.M.--| P.M.---| P.M.--| P.M.---| P.M.--| P.M.---|. The TAB notes are 9 9 7 7 7 7 9 9 7 7 7 7 and 7 7 5 5 5 5 7 7 5 5 5 5.

Gr. 2 B D

Gr. 1

T		7 9 7	7		7 9 7	7		10 12 10	10
A		8 9 8			8 9 8			11 12 11	
B	9		9			9			12

Gr. 3

P.M.--| P.M.-----| P.M.--| P.M.-----| P.M.--| P.M.-----|

T								12	12
A								12	12
B	9	9	9	9	9	9	9	10	10

7 7 7 7 7 7 7 7 7 7 7 7 10 10 10 10 10 10 10 10 10 10 10 10

B

T		10 9	12 10		7 9 7	7		7 9 7	7
A		11 9	12 11		8 9 8	4		8 9 8	
B						9			9

Gr. 3

P.M.--| P.M.-----| P.M.--| P.M.-----| P.M.--| P.M.-----|

T								9	9
A								9	9
B	12	12	9	9	9	9	9	7	7

12 12 9 9 9 9 9 9 7 7 7 7 7 7 7 7 7 7 7 7 7 7

A G5 A5

T		10 12 14 12		11 12 14	11 12 14	12 14 12	14 12 11	14 12 11
A		6 7 9 7						
B				10 12 14				

Gr. 3

P.M.-----| P.M.-----| P.M.--|

T				5	5	5 7	7
A				5	5	5 7	7
B	7	7	5 5 5 5 5	3	3	3 3	5

7 7 5 5 5 5 5 5 5 5 5 5 5 3 3 3 3 5 7 7 5

Gtrs. 1 & 2 B5

kbd.

Musical notation for Gtrs. 1 & 2 and keyboard part. The keyboard part features a rhythmic pattern of eighth notes with accents.

TAB notation for Gtrs. 1 & 2, showing a single fret (14) on the low E string.

Gtr. 3

Musical notation for Gtr. 3, featuring a series of chords and arpeggios.

TAB notation for Gtr. 3, showing fret numbers 9 and 7 across the strings.

Gtrs. 1 & 2 tacet
Gsus2

Asus2

Musical notation for Gtrs. 1 & 2 (tacet) and Gtr. 3. The first system includes a first ending bracket.

Musical notation for Gtr. 3 with P.M. markings indicating palm muting.

TAB notation for Gtr. 3, showing fret numbers 3, 5, 7, and 9.

Esus2

Gsus2

Asus2

Csus2

Musical notation for Gtr. 3 with P.M. markings and a second ending bracket. The notation includes sixteenth notes and a '6' marking.

TAB notation for Gtr. 3, showing fret numbers 0, 3, 5, and 6.

Gr. 3 B

T
A
B

5 7 6 7 9 7 6 7 9 7 6 7 9 7 6 7 5 7 6 7 9 7 6 7 9 7 6 7 5 7 6 7 9 7 6 7 9 7 6 7

A/G 1.

T
A
B

3 5 4 5 7 5 4 5 7 5 4 5 3 5 4 5 7 5 4 5 7 5 4 5 3 5 4 5 7 5 4 5 7 5 4 5

G 2.

T
A
B

3 5 7 4 5 7 4 5 7 4 6 7 5 7 8 5

Gr. 1 N.C. Gr. 3 tacet

T
A
B

14 9/14 14 14 14 16 14 14 16 17 16 14 17 16 16 16 16 17 16 16 19 19 17 16 16 17 19 19

* played 2nd time only

Gr. 3 played 1st time only

Gr. 4 cue notes played 2nd time

T
A
B

7 2 2 2 2 4 4 2 2 4 5 4 2 5 4 4 4 4 5 4 7 4 7 5 4 7 4 5 7

Gtr. 1

TAB

17 19 20 19 17 20 19	12 15	16 15 12 16 15	15 16 18 16 15	15	17 16 14 16 17 16 14 16 14	14 16 17
16			17		17 16 17	

Gtr. 4

TAB

5 7 8 7 5 8 7		3 4 6 4 3	3	5 4 2 4 5 4 2 4 2	5 4 2 4 5
4	2 4	5 4 2 5 4	5		

TAB

14 16	14 15 17	19 17 15	16	15 17/19 17 15	16 14	16 14
				12 14	12 14 16	

TAB

4 5 2 4 2	4 2 0	2	5 7	5 7 9	7 9	7 9/11 9 7	9 7	9 7
-----------	-------	---	-----	-------	-----	------------	-----	-----

B7^{b9}

TAB

14	14 15 14 12 14	14 15 14 12	14	17 16	14	14 15 14 12	14	14 15 14 12 14	14	14 13
----	----------------	-------------	----	-------	----	-------------	----	----------------	----	-------

TAB

7	7 8 7 5 7	7 8 7 5	7	10	7 9	7	7 8 7 5	7	7 8 7 5 7	7	7 6
---	-----------	---------	---	----	-----	---	---------	---	-----------	---	-----

Musical staff with treble clef and key signature of three sharps (F#, C#, G#).

Tablature for the first system, showing fret numbers on strings T, A, and B.

Musical staff with treble clef and key signature of three sharps (F#, C#, G#).

Tablature for the second system, showing fret numbers on strings T, A, and B.

Musical staff with treble clef and key signature of three sharps (F#, C#, G#).

Tablature for the third system, showing fret numbers on strings T, A, and B.

Musical staff with treble clef and key signature of three sharps (F#, C#, G#).

Tablature for the fourth system, showing fret numbers on strings T, A, and B.

Musical staff with treble clef and key signature of three sharps (F#, C#, G#), featuring a *8va* marking and a melodic line.

E5 D5 C5 B5

P.M.-----|

Tablature for the fifth system, showing fret numbers on strings T, A, and B.

Musical staff with treble clef and key signature of three sharps (F#, C#, G#), featuring a melodic line.

P.M.-----|

Tablature for the sixth system, showing fret numbers on strings T, A, and B.

Guitar Solo (8:05)

Gtr. 1 tacet

Gtr. 7 (dist. w/ delay)

Musical notation for Gtr. 7 (dist. w/ delay) in treble clef, key of D major. It features a melodic line with triplets and a final Em6 chord. The notation includes a 3-measure triplet starting on the 12th fret, followed by a 3-measure triplet on the 14th fret, and another 3-measure triplet on the 15th fret. The final measure is an Em6 chord with a 1/2 note duration.

TAB: 12 15 14 14 17 15 15 16 16 | 19 19 (19) (19) 17 19 17 | 19 14 17 14 16 14

Gtr. 4

Musical notation for Gtr. 4 in treble clef, key of D major. It features a melodic line with a 2-measure rest followed by a melodic phrase. The notation includes a 2-measure rest, followed by a 5-measure phrase starting on the 0th fret, and another 2-measure phrase starting on the 0th fret.

TAB: 0 0 0 3 0 0 | 5 0 0 4 0 | 2 0 0 3 0 0 | 5 0 0 4 0

Bb5 G5 A5 Em6

Musical notation for Gtr. 7 (dist. w/ delay) in treble clef, key of D major. It features a melodic line with a 16-measure rest followed by a melodic phrase. The notation includes a 16-measure rest, followed by a 14-measure phrase starting on the 14th fret, and another 16-measure phrase starting on the 14th fret.

TAB: 16 14 16 14 16 14 18 16 14 | 16 14 16 14 16 15 19 17 15 | 17 17 17 15 16 15 16 15 18 15

S.H.

Musical notation for Gtr. 4 in treble clef, key of D major. It features a melodic line with a 2-measure rest followed by a melodic phrase. The notation includes a 2-measure rest, followed by a 5-measure phrase starting on the 0th fret, and another 2-measure phrase starting on the 0th fret.

TAB: 2 0 0 3 0 0 | 5 0 0 4 0 | 2 0 0 8 5 7 | 2 0 0 3 0 0 | 5 0 0 4 0

Musical notation for Gtr. 7 (dist. w/ delay) in treble clef, key of D major. It features a melodic line with a 16-measure rest followed by a melodic phrase. The notation includes a 16-measure rest, followed by a 15-measure phrase starting on the 15th fret, and another 17-measure phrase starting on the 15th fret.

TAB: 16 15 16 15 19 15 16 15 16 15 19 15 17 18 17 15 | 17 15 17 15 16 15 16 15 16 15 17 14 17 14 14 17

Musical notation for Gtr. 4 in treble clef, key of D major. It features a melodic line with a 2-measure rest followed by a melodic phrase. The notation includes a 2-measure rest, followed by a 5-measure phrase starting on the 0th fret, and another 2-measure phrase starting on the 0th fret.

TAB: 2 0 0 3 0 0 | 5 0 0 4 0 | 2 0 0 3 0 0 | 5 0 0 4 0

B \flat 5 G5 A5 F#7 \flat 9

6 6 6 3 3

T
A
B

15 17 14 15 12 14 15 12 14 15 17 14 16 17 16 17 19 16 17 16 15 15 14 17 14 15 15 14 18 14 14 15

T
A
B

2 0 0 0 8 6 5 3 7 5 2 3 3 3 4 3 4 0 4 3

6 6

T
A
B

13 17 16 15 15 14 18 14 15 15 16 17 13 13 14 16 14 13 14 15 12

T
A
B

2 3 3 3 4 3 4 0 4 3 2 3 3 3 4 3 4 0 4 3

B \flat 5 G5 F#5 Em6

T
A
B

14 15 13 14 16 17 14 16 17 15 16 18 17 19 20 19 17 15 16 14 7 9 7 10 7 9 7 13 14 12

T
A
B

2 2 2 8 6 5 3 4 2 2 0 0 0 3 0 0 5 0 0 4 0 2 0 0 0 3 0 0 5 0 0 4 0

E5

G5
8va

A5

25

Musical notation for systems 1 and 2, including guitar and bass lines.

System 1: Treble clef guitar line with sixteenth-note runs. Bass line with fret numbers: 9 7 9, 7 9 7, 9 7 9 7 9, 14 14 14, 16 16 16 14 14 14, 17 17 17, 17 17 17.

System 2: Bass clef guitar line with chords. Bass line with fret numbers: 2 0, 0 0 3 0 0, 5 0 0 4 0, 2 0, 0 0 3, 5, 7, 5.

Musical notation for systems 3 and 4, including guitar and bass lines.

System 3: Treble clef guitar line. Chords: Badd11, D%. Includes 'Gr. 7 tacet' instruction.

System 4: Bass clef guitar line. Bass line with fret numbers: 19, 13 14 16, 13 14 16, 16, 16/12, 14, 16, (16)/12, 14 16 14. Includes $\frac{1}{2}$ markings.

Musical notation for systems 5 and 6, including guitar and bass lines.

System 5: Treble clef guitar line with chordal textures. Chord: Badd11. Rhythm figure: Rhy. Fig. 1.

System 6: Bass clef guitar line. Bass line with fret numbers: 7 9 9, 7 9 9, 10 12 12, 10 12 12.

* composite arrangement

Musical notation for systems 7 and 8, including guitar and bass lines.

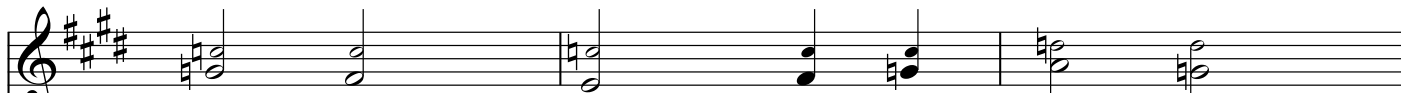
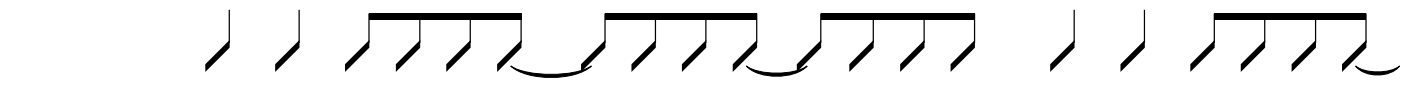
System 7: Treble clef guitar line with chordal textures. Chords: Badd11, Aadd9, E. Includes triplet markings.

System 8: Bass clef guitar line. Bass line with fret numbers: 13 14 16, 13 14 13 14 13, 16 14 12 14, 17 16 14 12, 14 16 14 16, 14 14 16, 17.

Musical notation for systems 9 and 10, including guitar and bass lines.

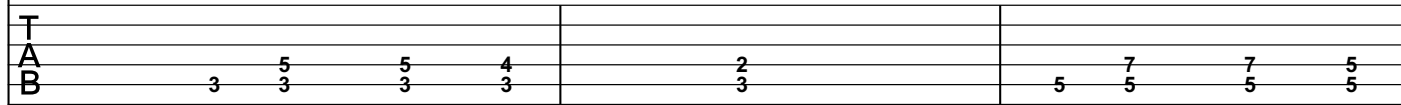
System 9: Treble clef guitar line with chordal textures. Rhythm figure: End Rhy. Fig. 1.

System 10: Bass clef guitar line. Bass line with fret numbers: 7 9 9, 7 9 9, 5 7 7, 0 2 2, 0.

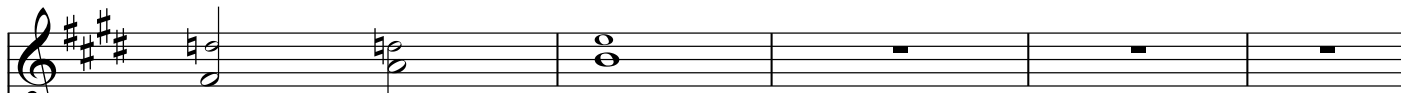
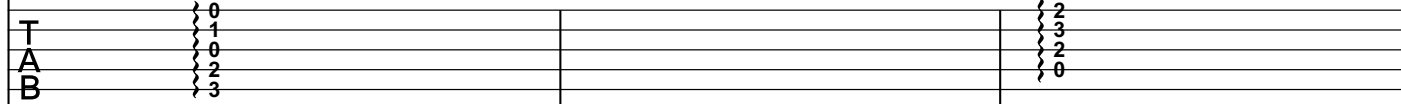
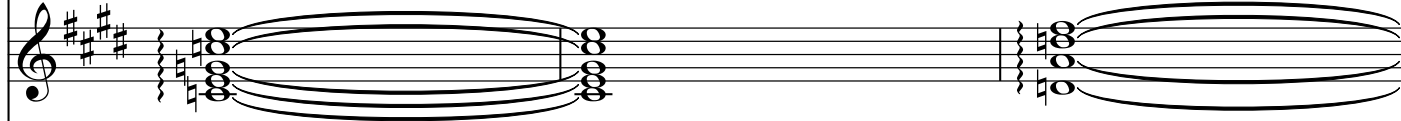


Say good - bye Say to the rage that

Gr. 3



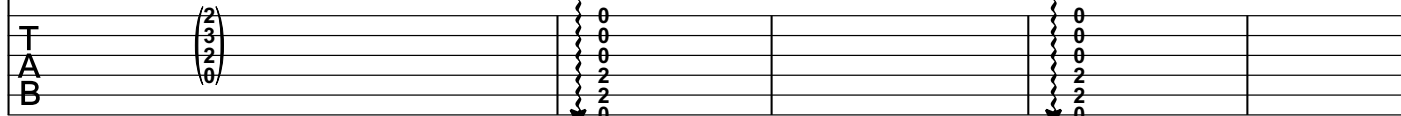
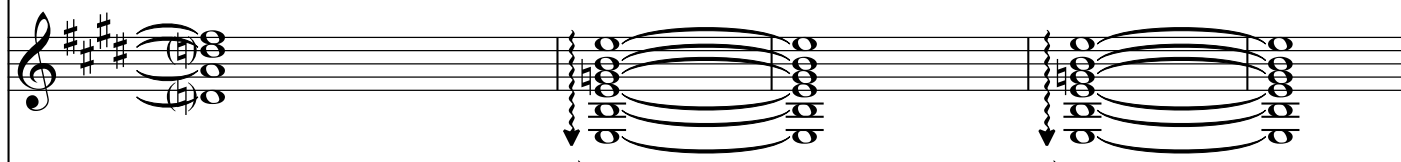
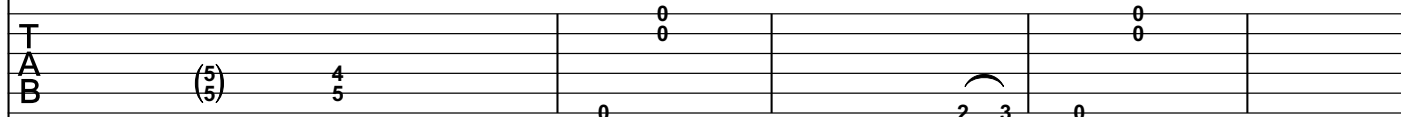
Gr. 5



ne - ver dies.



let ring-----



E5 F#5 G5 A5 B5

If you're near-ing the end just let

Gtr. 3

P.M.--+ P.M.--+ P.M.+

Gtrs. 5 & 6

let ring-----

T
A
B

	2	4	5	7	4	4	4
	2	4	5	7	4	4	4
B	0	2	3	5	2	0 0 0	2 0 0

Gtrs. 5 & 6 tacet

D5 A/D Gsus2 D5 A/D A/E

me in and I will take you home. I If

Gtr. 3

P.M.--+ P.M.--+ P.M.+ P.M.--+ P.M.--+ P.M.--+ P.M.--+

T
A
B

	4	4	4	7	6	7	6	9
	4	4	4	7	7	7	7	7
B	2	0 0 0	2 0 0 0	5 5 5 5	5 5 5 5	5 3	5 5 5 5	5 5 5 7

B5

time runs out but you're still in doubt re -

Gtr. 3

P.M.-----+ P.M.-----+ P.M.-+ P.M.-----+ P.M.-----+ P.M.-+

T
A
B

	4	4	4	4	4	4
	4	4	4	4	4	4
B	2	0 0 0	2 0 0 0	2 0 0	2 0 0 0	2 0 0

D5 A/D Gsus2 D5 A/D E5

mem-ber you're not a lone.

P.M.-----| P.M.-----| P.M.-----| P.M.-----|

T												
A	7		6		7		7		6		9	
B	5	5	5	5	5	5	5	5	5	5	5	7

Pre-chorus (9:52)

Gr. 3: w/ Riff H

F#m E

Light will shine on e - ven af - ter we're gone.

D.S. al Coda II

Gr. 3: w/ Riff G

D C#7

O - pen your eyes to the le - ga - cy you leave be - hind.

Gr. 4

T	3		0	2								
A	2					6	8	10	11	13	14	16
B	0					4	6	8	9	11	12	14

Coda II



Gtrs. 1 & 2: w/ Riff A
Gtrs. 3 & 4: w/ Riff B

Outro (10:58)

Gtrs. 1 & 2 tacet
Gtrs. 3 & 4: w/ Riff D (2 times)
Gtrs. 5 & 6: w/ Riff F (6 times)

B 7 Bsus4 A6%

O - pen your eyes and I'll show you the
A wake, a rise.

Bsus4 A6%

light. A-wake and a-rise and step out of the night.
To live, to die.

Bsus4 A6%

Pain and fear will disappear as your body turns to dust. Your
A wake, a rise.

Bsus4 A6%

on-ly sin was giving in. It's time to wake up.
To fall, to fly.

Gtrs. 3 & 4 tacet

B A

Gtr. 7

T
A
B

7 9 9 8 9 11 9 8 9 8 9 9 7 9 9 8 9 11 9 8 9 8 9 9 5 7 7 6 8 9 8 6 8 6 7 7

B Ah.

T
A
B

5 7 7 6 8 9 8 6 8 6 7 9 7 9 9 8 9 11 9 8 9 8 9 9 7 9 9 8 9 11 9 8 9 8 9 9

Gtr. 7 tacet
Gtr. 1: w/ Riff C
Gtr. 2: w/ Riff C (first 4 meas.)
Gtrs. 3 & 4: w/ Riff D

A

Bsus4

3

3

3

Gtr. 2

Bsus4

8^{va}

Bsus4/A

3

3

3

16 17 16 14 16 17 16 14 16 17 16 14 16 14 19 19 19 19 22

1/2 1/2 1

Gtrs. 1, 2, 3 & 4 tacet

Gtrs. 5 & 6: w/ Riff E

7

rit.

Gsus2

Asus4